

Coronal and Prominence Diagnostics based on Transverse Oscillations: Analytic Approach

Bojan Vršnak

Hvar Observatory, Croatia



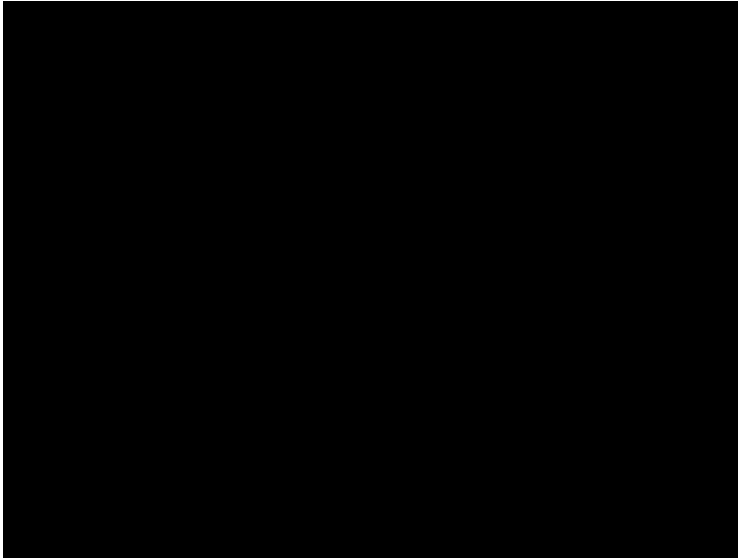
This work has been fully supported by *Croatian Scientific Foundation*
under the project 6212 „*Solar and Stellar Variability*“ (SOLSTEL).



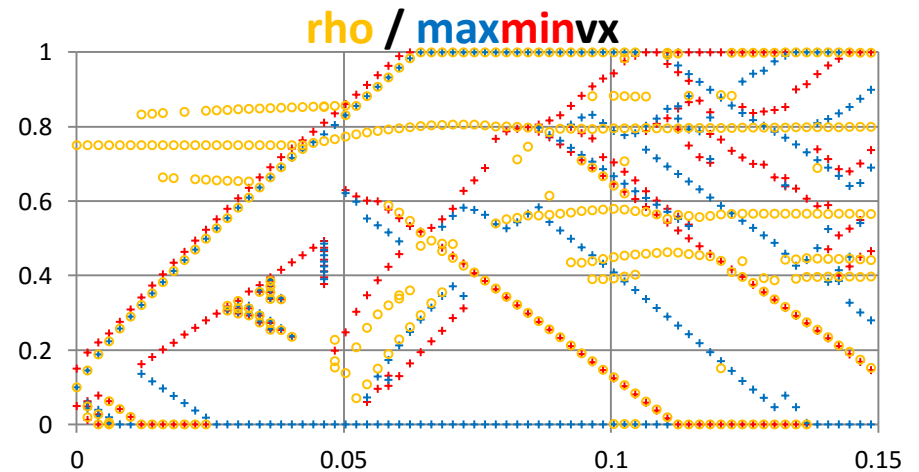
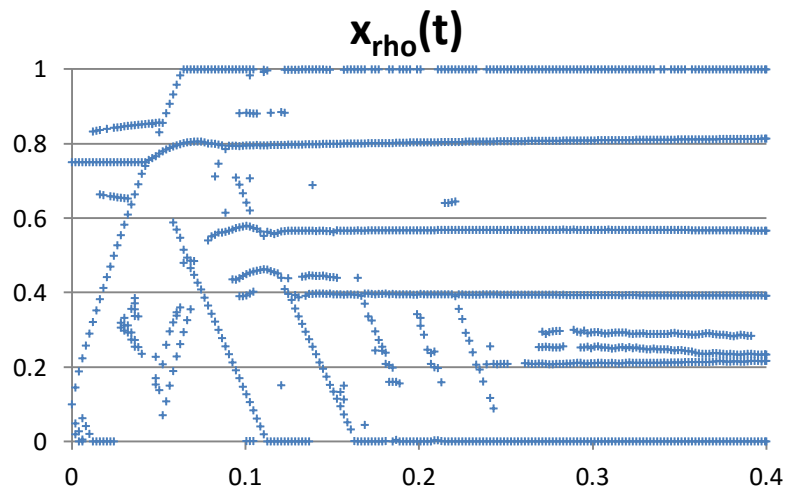
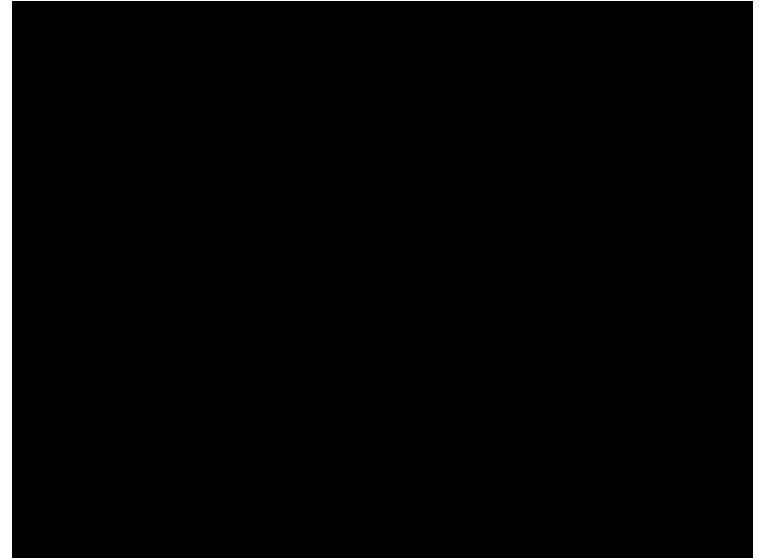
Simple Wave \rightarrow Dense Obstacle

(prominence, streamer, pseudo-streamer)

free



fixed

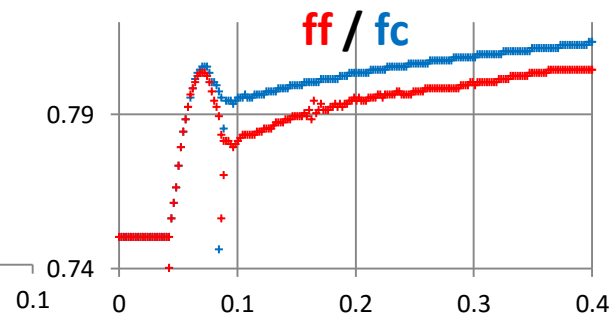
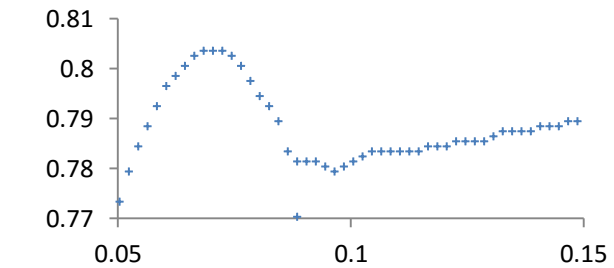
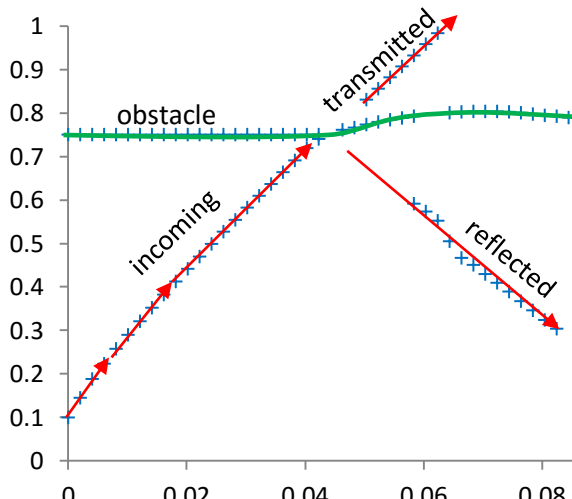
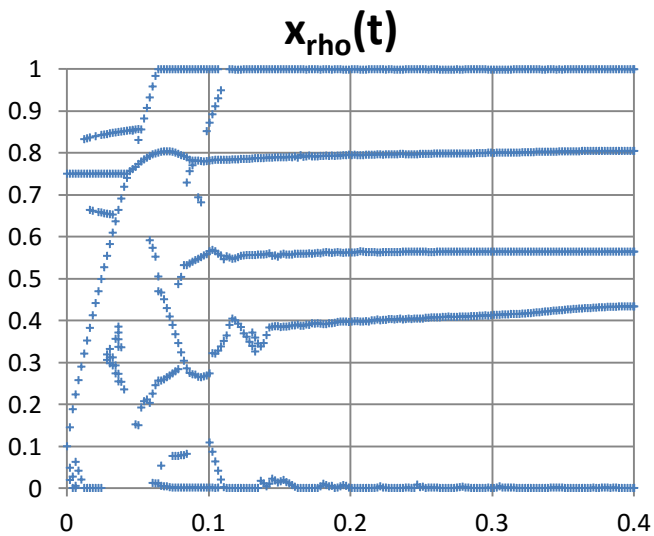


Simple Wave \rightarrow Dense Obstacle

fixed

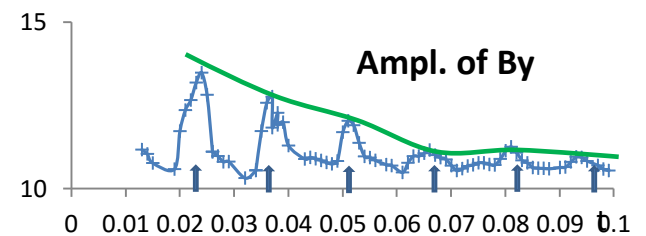
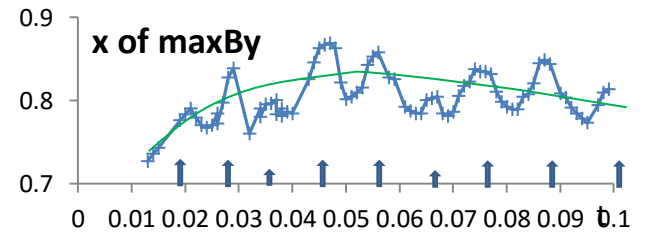
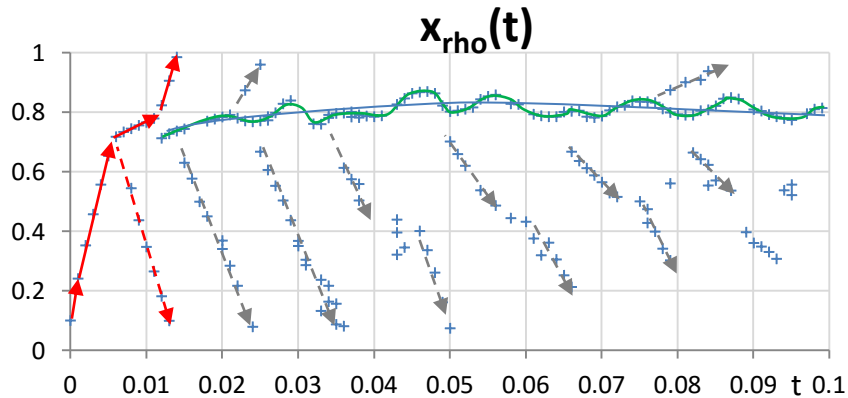
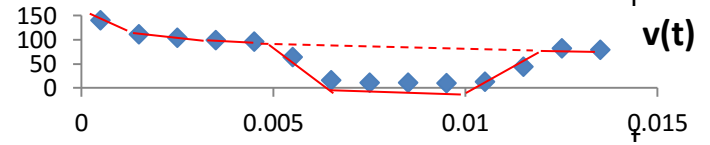
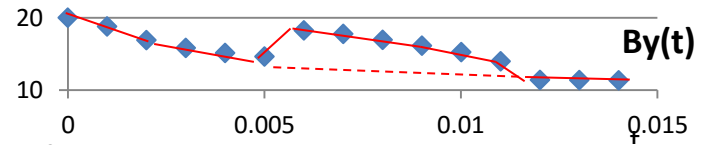
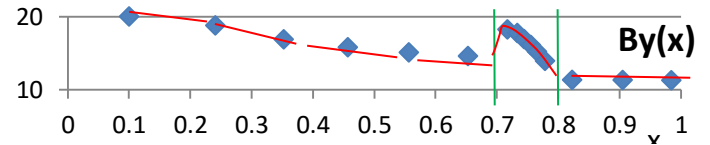
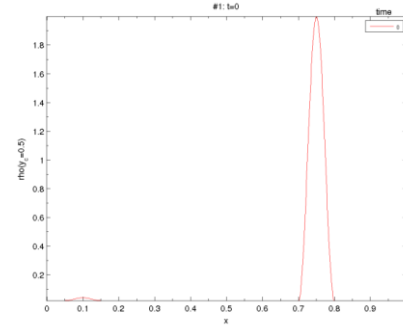
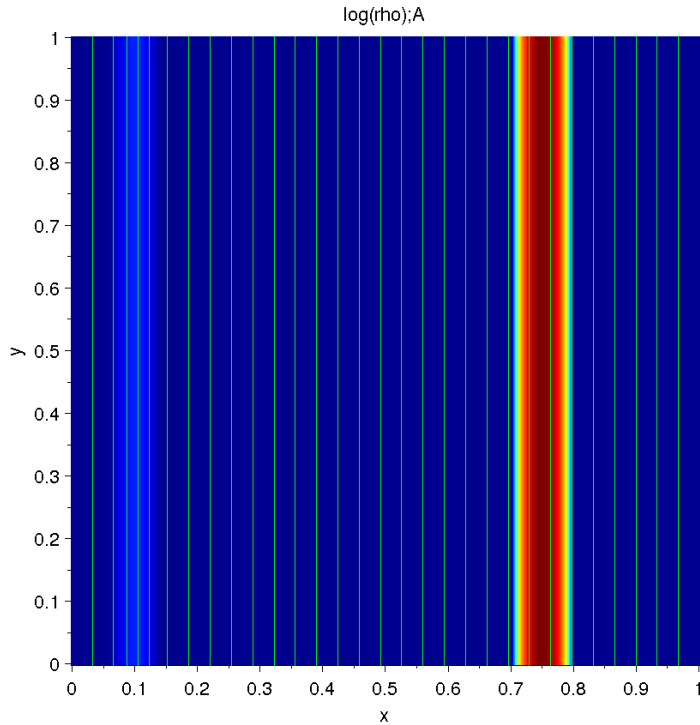


fixed



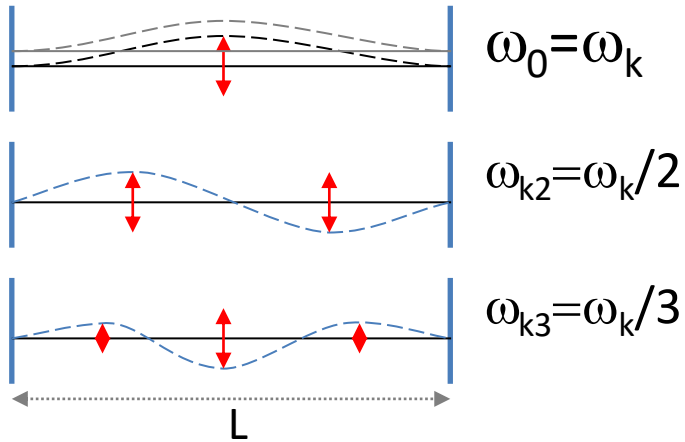
Simple Wave → Dense Obstacle

model (nx=999 999)

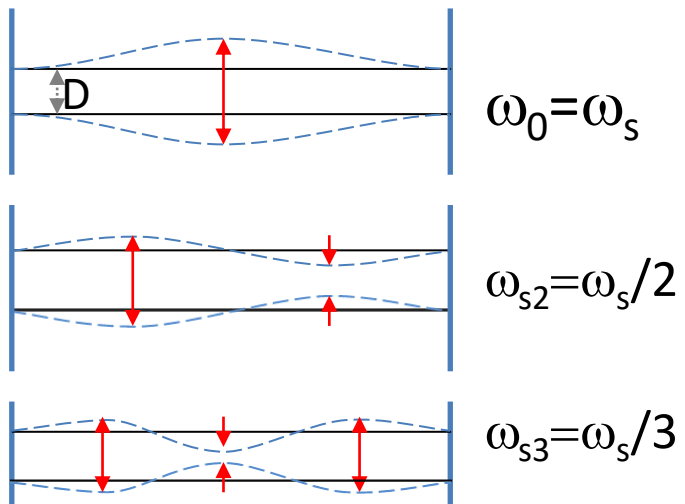


Analytical Model: Basic Modes

“kink” mode



“sausage” mode



$$a(x,t) = -c_1 x + c_2 f(t) - c_3 v$$

$$[c_1 = \omega^2 ; c_3 = 2\gamma]$$

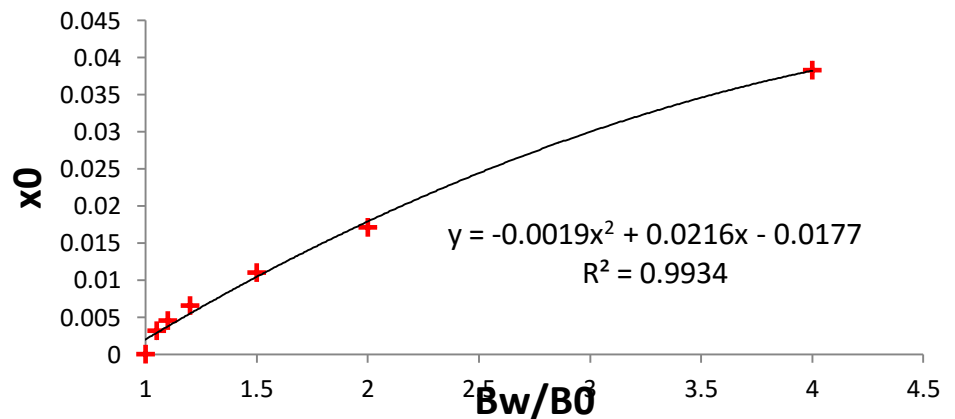
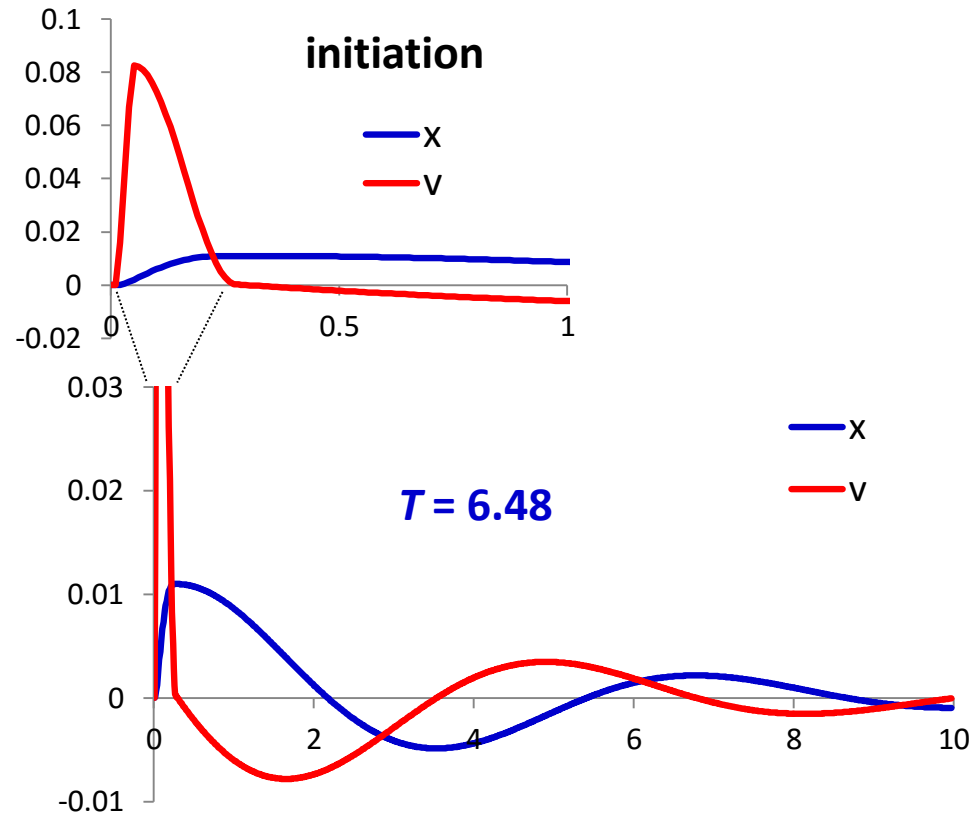
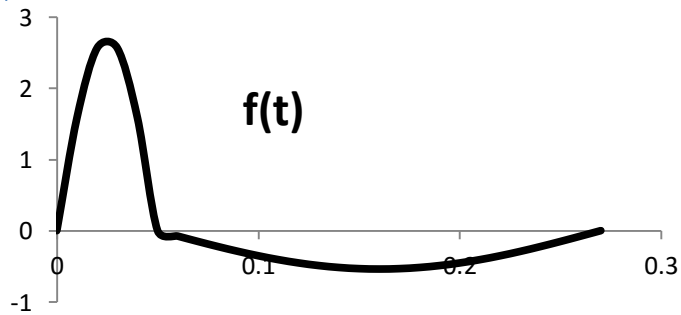
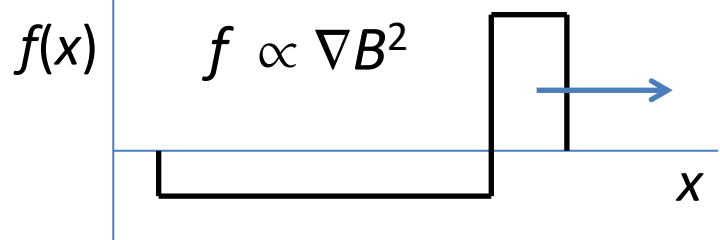
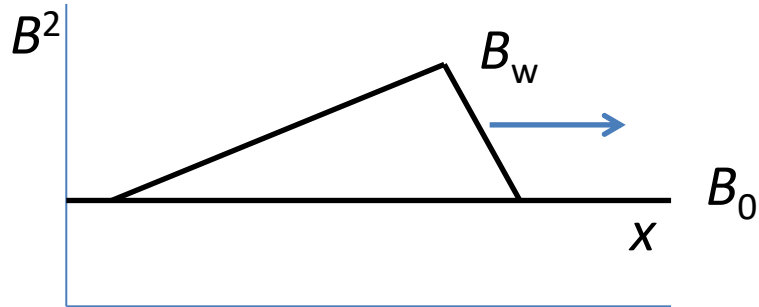
$$c_1 \sim B^2 / \mu_0 \rho R \sim 2 \chi B^2 / \mu_0 \rho L^2$$

$$\omega_k \sim v_{A0} / L \quad \rightarrow \quad T_k \sim 2\pi L / v_{A0}$$

$$\text{Similarly: } T_s \sim 2\pi D / v_{A0}$$

$$T_k / T_s \sim L / D$$

Analytical model: Oscillation Triggering



Wave -> Obstacle

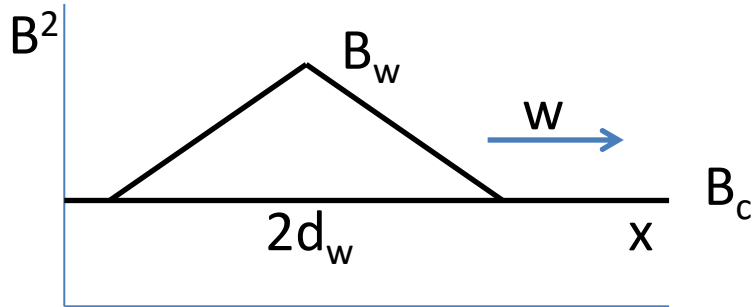
Damped Oscillator:

$$\ddot{x} + \omega^2 x + 2m\delta \dot{x}(t) + f(t) = 0$$

Key parameters:

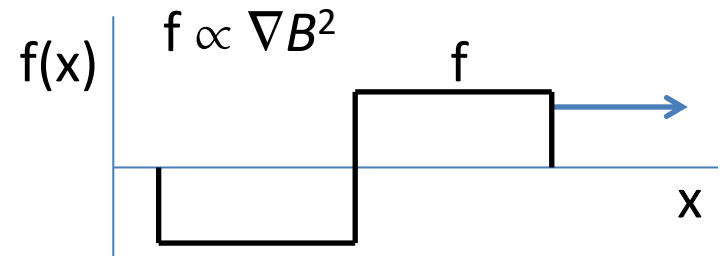
- maximum speed v_m
- acceleration length: $x(v_m) = x_1$
- acceleration time t_1
- initial acceleration a_0
- period: P
- amplitude x : $x_m = x_2$
- [damping: δ]

Analytical model: Oscillation Triggering

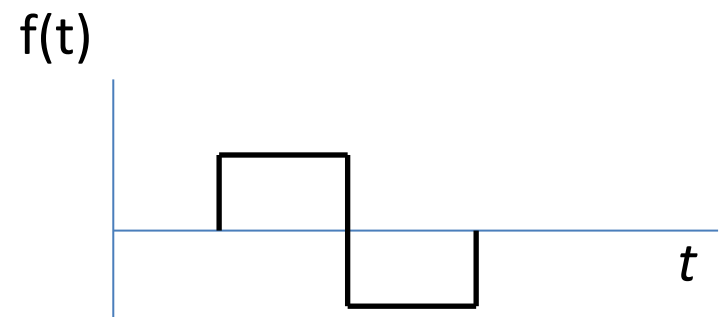


(neglecting damping)

$$\text{Eq 1a: } \rho_p v_m^2 / 2 = \int_0^{x1} (f - \omega^2 x) dx$$



$$[\text{Eq 1b: } \rho_p v_m^2 / 2 = \int_{x1}^{x2} (f + \omega^2 x) dx]$$



$$\text{Eq 2: } w_m = V_{Ap} + 3v_m / 2$$

$$\omega = 2\pi / P = 2\sqrt{2} V_{Ap} / \lambda$$

$$f = \rho_p a_0 = (B_{wp}^2 - B_p^2) / 2\mu d_{wp}$$

Results: Prominence

$$\omega^2 = (2\pi/P)^2 = 8V_{Ap}^2 / \lambda^2, \quad \text{i.e.,} \quad V_{Ap} = \pi^2 \lambda / 2P$$

$$\text{Eq 1: } \rho_p = \omega^2 x_1^2 / (2a_0 x_1 - v_m^2) \quad \& \quad W_{pm} = V_{Ap} + 3v_m/2$$

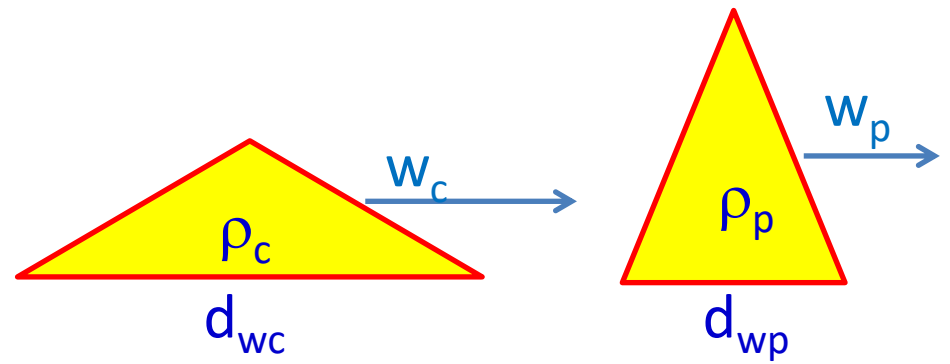
$$\text{i.e.,} \quad B_p = V_{Ap} (\mu \rho_p)^{1/2} \quad \& \quad f = \rho_p a_0$$

$$\text{Eq 2 (for } d_w \gg d_p) : \quad d_{wp} = (V_{Ap} + 3v_m/2) t_1$$

$$f = (B_{wp}^2 - B_p^2) / 2\mu d_{wp} = (X_p^2 - 1) B_p^2 / 2\mu d_{wp}$$

$$B_{wp}^2 = B_p^2 + 2\mu f d_{wp}, \quad \text{i.e.,} \quad X_p^2 = 1 + 2\mu f d_{wp} / B_p^2$$

Results: Corona



(for $d_w \gg d_p$): $d_{wp}/w_p = d_{wc}/w_c$, i.e., $d_{wc} = d_{wp} w_c / w_p$

$\Delta\rho_p d_{wp} = \Delta\rho_c d_{wc}$, i.e., $(\rho_c/\rho_p) (X_c - 1)/(X_p - 1) = w_p/w_c$

$(w_c^2 - V_{Ac}^2) = (w_p^2 - V_{Ap}^2) w_p/w_c$, i.e.,

$(V_{Ac}/V_{Ap})^2 = (w_c/V_{Ap})^2 - [(w_p/V_{Ap})^2 - 1] (w_p/w_c)$

&

$\rho_c/\rho_p = (V_{Ac}/V_{Ap})^2$

&

$B_c = V_{ac} (\mu\rho_c)^{1/2}$