

The Origin, Early Evolution and Predictability of Solar Eruptions

Lucie M. Green¹  · Tibor Török² · Bojan Vršnak³ ·
Ward Manchester IV⁴ · Astrid Veronig⁵

Received: 15 August 2017 / Accepted: 15 December 2017

© The Author(s) 2018. This article is published with open access at Springerlink.com

Abstract Coronal mass ejections (CMEs) were discovered in the early 1970s when space-borne coronagraphs revealed that eruptions of plasma are ejected from the Sun. Today, it is known that the Sun produces eruptive flares, filament eruptions, coronal mass ejections and failed eruptions; all thought to be due to a release of energy stored in the coronal magnetic field during its drastic reconfiguration. This review discusses the observations and physical mechanisms behind this eruptive activity, with a view to making an assessment of the current capability of forecasting these events for space weather risk and impact mitigation. Whilst a wealth of observations exist, and detailed models have been developed, there still exists a need to draw these approaches together. In particular more realistic models are encouraged in order to assess the full range of complexity of the solar atmosphere and the criteria for

The Scientific Foundation of Space Weather

Edited by Rudolf von Steiger, Daniel Baker, André Balogh, Tamás Gombosi, Hannu Koskinen and Astrid Veronig

✉ L.M. Green
lucie.green@ucl.ac.uk

T. Török
tibor@predsci.com

B. Vršnak
bvršnak@gmail.com

W. Manchester IV
chipm@umich.edu

A. Veronig
astrid.veronig@uni-graz.at

¹ Mullard Space Science Laboratory, UCL, Holmbury St. Mary, RH5 6NT, UK

² Predictive Science Inc., 9990 Mesa Rim Rd, Ste 170, San Diego, CA 92121, USA

³ Hvar Observatory, Faculty of Geodesy, University of Zagreb, Kacicева 26, 10000 Zagreb, Croatia

⁴ Department of Climate and Space Sciences and Engineering, University of Michigan, Ann Arbor, MI 48109, USA

⁵ Institute of Physics/IGAM, University of Graz, Universitaetsplatz 5, 8010 Graz, Austria

which an eruption is formed. From the observational side, a more detailed understanding of the role of photospheric flows and reconnection is needed in order to identify the evolutionary path that ultimately means a magnetic structure will erupt.

Keywords Sun · CME · Space weather

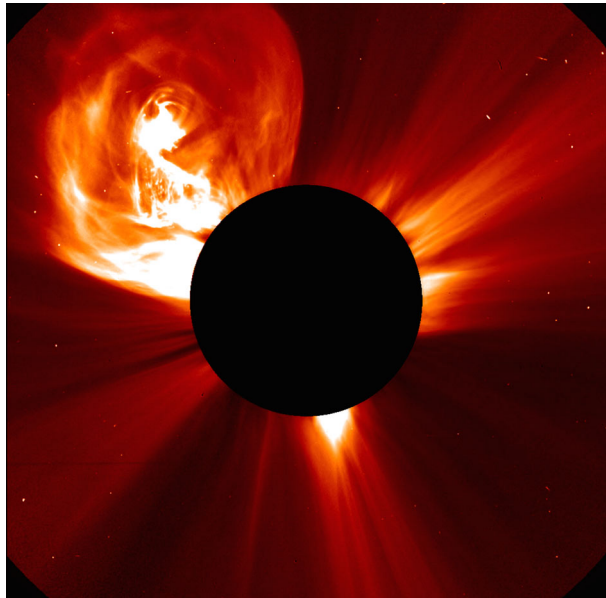
1 Introduction

Our Sun is a dynamic star, exhibiting a range of large-scale eruptive activity that, over the last roughly 150 years of study, has led to various activity categories being developed. These include eruptive flares, filament eruptions, coronal mass ejections (CMEs) and failed eruptions. The modern understanding is that this list represents different manifestations of a disruption and reconfiguration of the coronal magnetic field, which ultimately leads to an ejection of magnetised plasma that may, or may not, propagate into the heliosphere. In this review we use the general term CME to encapsulate all eruptive activity types, and focus on the physical processes that are involved.

Coronal mass ejections are the sudden release of 10^{15} – 10^{16} g of chromospheric and coronal plasma into the heliosphere. Their speed ranges from between a few tens to a few thousands km s^{-1} , with an average value of $\sim 490 \text{ km s}^{-1}$ (Webb and Howard 2012). Fast CMEs (that have speeds greater than the background solar wind through which they are propagating) can drive shocks ahead of them. CMEs are identified through the use of coronagraph data in which they are seen via the detection of Thomson scattered photons in outward moving plasma structures that have a higher electron density than the background corona (Fig. 1). Their plane-of-sky configuration varies from event to event and includes amorphous blobs, a “3-part” structure consisting of a bright front, dark cavity and bright central core (Illing and Hundhausen 1985), and helical shapes. The plasma traces out the structure of the magnetic field and the ejected plasma is carried away from the Sun as it is “frozen-in” to the magnetic field. Indeed studying the magnetic field is central to understanding CMEs since the energy to power CMEs, which can be up to the order of 10^{32} ergs, can only come from the conversion of free magnetic energy into other forms (Forbes 2000). The free magnetic energy is the excess energy stored in the coronal field above the energy of the current-free potential field configuration. The free magnetic energy is that available to be released and is stored in the form of electric currents in the pre-eruptive non-potential magnetic structures (for a review see, e.g., Low 1996; Priest and Forbes 2002; Vršnak 2006; Aulanier 2014; Schmieder et al. 2015).

When CMEs are formed at the solar limb many can be seen to originate from coronal streamers (Hundhausen 1993). However, for the majority of CMEs, the eruption includes a low-lying sheared core field, which may or may not contain filament plasma, and that cannot be observed with a coronagraph. Therefore instruments that image the solar disk must be used to study the origin of CMEs in addition to coronagraph data. It is these low altitude observations that showed CMEs are closely related to solar flares (e.g. Vršnak 2008; Schmieder et al. 2015). During a solar flare, free magnetic energy is converted into energetic particles, heat and electromagnetic radiation and the close temporal and spatial CME-flare relationship shows that they are the product of the same disruption and reconfiguration of the coronal magnetic field (e.g. Temmer et al. 2010, and references therein). A relationship between CME occurrence and flare size has been noted, with observations revealing that the likelihood of a flare having an associated CME increases with flare magnitude and that all flares above X5 in the GOES classification occur in concert with a CME (Andrews 2003;

Fig. 1 A coronal mass ejection imaged by the SOHO/LASCO C2 coronagraph on 4th January 2002. The CME is revealed due to Thomson scattered photospheric light and the ejection can be seen in the *upper left* of the image to have a bright core in addition to the surmounting structure. The *black disk* is a result of the occulting disk, which has a radius of $1.7R_{\text{sun}}$



Yashiro et al. 2005). However, it should be pointed out that CMEs and flares do not occur on a one-to-one basis.

CMEs are common events and their occurrence rate varies with the phase of the solar cycle. On average one CME is formed per day at cycle minimum with around five per day at cycle maximum (Webb and Howard 2012) when active regions are more abundant on the solar disk. Active regions can be the source of CMEs during their emergence phase, when current carrying magnetic field is being brought into the corona (Wang et al. 1994; Leka et al. 1996), and through the decay phase when fragmentation and flux dispersal occur, redistributing the magnetic field into the quiet sun. However, CME characteristics can be very different at different evolutionary stages of an active region. From compact, fast CMEs that occur during the emergence phase to quiescent filament eruptions that occur when active regions are at the end of their lives, and finally streamer blowouts associated with the largest-scale coronal structures/or quiescent filaments. The eruptive structure that forms the CME can come from within an active region and also between active regions. Two examples of how the CME *rate* varies with an active region's evolutionary phase were presented in Démoulin et al. (2002) and Green et al. (2002). These studies followed NOAA 7978 and NOAA AR 8100, respectively, for several months and showed that these active regions were CME productive throughout their lifetime (whereas flare activity disappeared as the decay phase progressed). The findings indicate that CMEs do not seem to be so dependent on the magnetic field conditions that are necessary for flares to occur. Flares, especially major flares, occurred when each active region was young and flux emergence had recently taken place. CMEs on the other hand occurred at all evolutionary stages, including during the decay phase when there was no new major flux emergence and the energy density of the magnetic field had reduced. These studies revealed that CMEs are not as dependent on strong field and magnetic complexity as are flares. Still, active regions that have large and complex magnetic field configurations can be the origin of many CMEs during their emergence phase. For example, NOAA active region 9236 produced 17 CMEs in 5 days (Gopalswamy et al. 2005) and NOAA active region 8100 produced 15 CMEs in 7 days (Green et al. 2002).

However, these large and dramatic regions should not distract from the fact that CMEs are formed in magnetic structures that span a range of spatial scales. The size-scale of the pre-eruption structure can be as large as 100s thousands of km long (polar crown filaments) but the structure can be as small as only 10s of thousands of km across (Mandrini et al. 2005).

Some CMEs detected in coronagraph data show no signatures in the lower atmosphere, earning them the name “stealth CMEs”. They originate at altitudes of $>0.1R_{\odot}$, where R_{\odot} is the solar radius, (Robbrecht et al. 2009) in magnetic structures where the field strength is weak and the plasma density low, meaning that observational signatures are less likely to be seen (Howard and Harrison 2013). A study of the Sun at solar minimum suggests that stealth CMEs may make up 30% of all CMEs that occur (Ma et al. 2010). Kilpua et al. (2014) found in their study after solar maximum in 2014 that ten out of the 16 studied events could be classed as stealth CMEs.

Taking into account both the remote sensing and in situ data it has been realised that a CME in the inner corona can be composed of some or all of the following:

- a shock that moves ahead of the CME
- a frontal structure with high plasma density ($n_e \approx 10^{14} \text{ m}^{-3}$), coronal temperature ($\sim 2 \text{ MK}$) and high magnetic field strength (10^{-4} T)
- a cavity with low plasma density ($n_e \approx 10^{13} \text{ m}^{-3}$), coronal temperature ($\sim 2 \text{ MK}$) and field strength of few 10^{-4} T
- a prominence core with high plasma density ($n_e \approx 10^{17} \text{ m}^{-3}$), low temperature ($\sim 80\,000 \text{ K}$) and high field strength (few 10^{-3} T)
- a post-eruption arcade with a plasma temperature of $\sim 10 \text{ MK}$ and a few 10^{-4} T field strength

Studies of CMEs have found a new relevance in the last three decades through the realisation that they can drive severe space weather at Earth (Gosling 1993; Green and Baker 2015). Parameters that are important for determining the level to which a CME will be geo-effective upon its impact with the magnetosphere include the strength of the southward component of the CME’s magnetic field (B_z), the speed and plasma density of the CME (V_{CME} , ρ) and the CME’s dynamic pressure (ρV_{CME}^2). This means that fast CMEs with a strong and sustained southward magnetic field component and/or a high plasma density are likely to be the ones that have the most significant effect. Historical case studies of such events include the Carrington event of 1859 when a CME reached the Earth in just 17.5 hours (Cliver and Svalgaard 2004) giving it an average velocity along the Sun–Earth line of $\approx 2300 \text{ km s}^{-1}$, and the March 1989 event which was exceptionally bright in coronagraph data, implying it had a high plasma density although it also had a much lower average Sun–Earth line speed of around 770 km s^{-1} (Feynman and Hundhausen 1994). These CMEs produced geomagnetic storms with a disturbance storm time (Dst) index estimated to be -850 nT (Siscoe et al. 2006) and -548 nT (Cliver and Svalgaard 2004) respectively. It is worth noting that the Dst value during the 1859 event has been a topic of controversy, with Tsurutani et al. (2003) proposing that -1760 nT may have been reached.

Especially important in the creation of severe geomagnetic storms appear to be CMEs that follow one another in quick succession (Liu et al. 2014; Dumbović et al. 2015; Temmer and Nitta 2015; Vennerstrom et al. 2016). The Carrington event is one example of such a case. In these events, the preceding CME may “pre-condition” the space between the Sun and the Earth so that the following CME is embedded in a faster solar wind stream and so experiences less drag; allowing it to maintain a high velocity out to 1 AU (Temmer et al. 2017).

The impact of a CME extends beyond its direct interaction with the magnetosphere as shocks driven by fast CMEs (roughly above around 800 km s^{-1} , Kahler 2001) can accelerate

particles, producing an additional space weather effect when these solar energetic particles (SEPs) arrive at the Earth (Reames 2013). Meaning that when CME predictions are being developed, speed and spatial extent of the CME are important quantities to predict too. As are the upstream wind conditions ahead of the shock that can affect the shock geometry.

The very significant role that CMEs play in the creation of space weather has naturally led to a desire to predict their time of arrival at Earth. Once a CME has been launched, it can take from less than a day to more than three days before it arrives. Since the fastest CMEs can be the most geo-effective, the ability to predict their occurrence before they happen would significantly improve forecasting lead times. In this review paper we draw together the wide-ranging observational (Sect. 2.1) and theoretical (Sect. 2.2) work on CMEs to assess the current status of understanding how eruptive structures are formed and how energy is injected into the magnetic field, over timescales of weeks to hours before the eruption. We focus on processes that occur during the energy build-up phase that bring the magnetic field to a point where a “driving” mechanism occurs to drive the rapid expansion of the structure. From this, we look at current and future directions of predicting CMEs based on both observations and modelling (Sect. 3).

2 Origin and Evolution of Solar Eruptions

2.1 Observations

Coronal mass ejections are observed using a wide range of imaging and spectroscopic data, spanning wavelengths from radio to X-ray and altitudes from the photosphere to the outer corona. These observations reveal that in many cases, the onset of a CME will be marked by the eruption of a filament/prominence in the lower solar atmosphere. Indeed, over 70% of CMEs begin this way (Munro et al. 1979). The filament may be seen as a bright core in coronagraph data in CMEs that have a 3-part structure. Lower coronal observations of CME source regions can also show the rise of plasma structures that are emitting at EUV and/or soft X-ray wavelengths. Such rising structures have been seen in *Yohkoh*/SXT data (e.g. Moore et al. 2001; Green and Kliem 2014), *SDO*/AIA channels (e.g. Liu et al. 2010; Zharkov et al. 2011) and *STEREO*/EUVI data (Bein et al. 2011; Patsourakos et al. 2013). In the wake of a CME, the reconfiguration results in a post-eruption arcade, which is also known as a flare arcade. When the CME source region is located at the solar limb, hot plasma structures referred to as plasmoids or flux ropes have been observed (Shibata et al. 1995; Cheng et al. 2011; Reeves and Golub 2011). Once the eruption is well underway, the footpoints of the expanding and erupting magnetic volume can sometimes be identified through EUV or soft X-ray regions which have dimmed due to the reduction in plasma density (Rust and Hildner 1976; Sterling and Hudson 1997; Zarro et al. 1999). Figure 2 provides examples of the variety of lower corona signatures that indicate the occurrence of a CME.

In this section we review observational aspects of the coupled evolution of the photosphere and the corona in the long-term (Sect. 2.1.1) and short-term (Sect. 2.1.2) leading up to the eruption and during the rapid acceleration phase of the eruption itself (Sect. 2.1.3).

2.1.1 Long-Term Evolution Prior to Eruption

The energy required to power a CME appears to be built-up in the coronal field over days/weeks prior to the eruption, in an energy storage and release process. This injection of

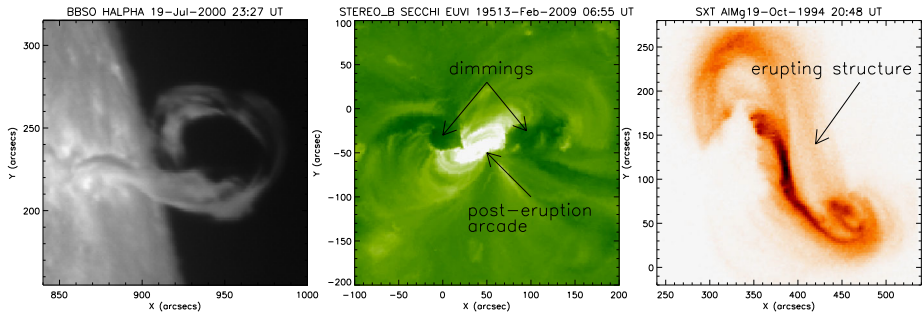


Fig. 2 Lower coronal signatures of the occurrence of a coronal mass ejection (CME). There are a variety of observational manifestations of CMEs including filament eruptions (*left panel*), post-eruption arcades (also called flare arcades, *middle panel*), dimming regions (*middle panel*) and rising EUV/soft X-ray structures (*right panel*)

energy is driven by both the emergence of flux (which is non-potential, Leka et al. 1996) and photospheric motions due to convection and differential rotation that can stress the coronal field. In some cases sunspot rotation is observed (e.g., Brown et al. 2003) and/or rotational motions of same-polarity magnetic fragments, one about the other (James et al. 2017).

Development of non-linear force-free field (NLFFF) modelling techniques have provided methods to reconstruct the coronal magnetic field using photospheric vector magnetograms. In turn the evolution of the energy in the coronal field can be analysed from these extrapolated configurations. The analysis of the magnetically complex NOAA active region 11158 by Sun et al. (2012) followed the energy stored in the coronal field over a period of five days, during which time the region produced multiple flares and CMEs. The study found a rapid increase in the free magnetic energy of the coronal field lasting around four hours as the flux emergence began. This was followed by a more gradual injection of free energy into the coronal configuration during the following \sim two days. The energy was mostly accumulated at low heights (less than 6 Mm) along a polarity inversion line where a low-lying filament formed, and where later eruptions originated. The extrapolated coronal field configuration shows that around the time of an X-class flare approximately 3.4×10^{31} ergs of energy is released. The NLFFF modelling studies by Gibb et al. (2014), Mackay et al. (2011) followed the evolution of two short-lived small bipolar active regions during their emergence and decay phases using a magnetofrictional method. The simulated coronal field in these studies captured the energy build-up prior to the CMEs that the regions produce. Free energy is found to be built-up during the flux emergence phase and also during the decay phase when the regions start to undergo flux cancellation at their internal polarity inversion lines (flux cancellation is described and discussed at the end of this section).

As well as energetics, the quantity of magnetic helicity has been considered in the evolution of active regions that produce CMEs. Magnetic helicity is the quantity that encapsulates how twisted, sheared and interlinked the magnetic field is. Magnetic helicity is approximately conserved even during non-ideal magnetohydrodynamic (MHD) processes (Berger 1984). For example, magnetic reconnection serves to transport magnetic helicity to larger spatial scales, opposite to energy, which cascades to smaller scales where it can dissipate. Magnetic helicity is injected into the corona via flux emergence, photospheric motions and torsional and shear Alfvén waves and this, along with its conservation property, has led to the suggestion that CMEs may act as a valve to prevent magnetic helicity from endlessly accumulating in the solar atmosphere (Heyvaerts and Priest 1984; Low 1996). Indeed, active

regions during their entire lifetime can be the source of many CMEs, which eject a significant amount of magnetic helicity (Démoulin et al. 2002; Green et al. 2002). It has even been proposed that CMEs are the unavoidable product of magnetic helicity accumulation in the force-free magnetic field of the corona (Zhang et al. 2006). The proposal of an intimate link between this topological quantity and a CME spurred a wave of research in this area. New methods to quantify magnetic helicity injection into the solar atmosphere via flux emergence and photospheric flows provided the tools to be able to make these investigations (Démoulin and Berger 2003).

Many studies of the evolution of magnetic helicity in active regions in the time periods around the occurrence of flares and CMEs have been carried out. Nindos and Andrews (2004) studied the coronal magnetic helicity evolution of active regions that were the source of 133 M-class and X-class flares. They found that the magnetic helicity contained in the coronal field of an active region was larger in regions that produced flares that had associated CMEs than for those regions that had CME-less flares. Other studies have looked at magnetic helicity flux, even proposing that a threshold helicity injection rate must be exceeded for a CME to occur (LaBonte et al. 2007). However, in contrast to this, other work has found that major changes in the magnetic helicity content of an active region can occur both before and after a CME (Smyrli et al. 2010). Helicity injection prior to a CME in the Smyrli et al. (2010) study was seen to be due to flux emergence, whereas the changes after the CME were proposed to be due to the torque imbalance between the helicity-depleted corona and the sub-photospheric portions of the flux as suggested in Longcope and Welsch (2000), Démoulin et al. (2002), Green et al. (2002). Whether or not magnetic helicity is a quantity that can be used to predict CME occurrence will be discussed further in Sect. 3.1.

The role of flux emergence and photospheric shear flows in injecting sufficient helicity into the corona before a CME were studied by Nindos and Zhang (2002) using NOAA active region 9165. The study finds that the horizontal flows did not inject sufficient magnetic helicity into the corona to account for that ejected by CMEs. Instead, flux emergence is invoked as the dominant helicity source. However, studies of smaller and shorter-lived bipolar active regions suggest that during the decay phase of these short-lived regions the photospheric motions caused by convection (super-granular flows) may play an important role in injecting helicity into the corona (Savcheva 2012; Gibb et al. 2014). All the above studies indicate that the magnetic helicity in the corona can be injected via variety of mechanisms, and the mechanism that dominates may depend on the evolutionary stage of the region. Next, we focus on how a ubiquitous process observed in the photosphere known as flux cancellation might prime the corona, ready for an eruption.

Flux cancellation is a common phenomenon that occurs all over the Sun (Livi et al. 1985) and is the name given to an observational event consisting of the approach of two opposite polarity fragments that collide and then disappear from the photospheric magnetic field measurement (Martin et al. 1985). Its importance for this review paper is that flux cancellation is often observed in the time leading up to a CME (Martin et al. 1985), which suggests that it may be important in the creation of an eruptive magnetic field configuration and its destabilisation. The physical interpretation of flux cancellation is that when opposite polarities collide they undergo reconnection in the photosphere or chromosphere (e.g. Yurchyshyn and Wang 2001; Litvinenko and Martin 1999). These opposite polarities represent the footpoints of two sheared loops and the low-altitude reconnection reconfigures the magnetic field so that a long loop forms in the corona and also a very short loop that submerges below the photosphere due to its tension force overcoming buoyancy. Shear and free magnetic energy are concentrated along polarity inversion lines where flux cancellation is ongoing for extended periods of time (Welsch 2006), hence its relevance for CME studies.

In some small bipolar active regions, an eruptive configuration is formed via flux cancellation along the internal polarity inversion line during the decay phase of the region, when the flux is fragmenting. This is well observed in bipolar active regions that form S-shaped “sigmoidal” emission structures in soft X-ray or EUV wavebands over a couple of days (e.g. Green et al. 2011). Both the coronal evolution and the photospheric evolution in these cases match well the scenario proposed by van Ballegooijen and Martens (1989) in which a sheared arcade is transformed into a flux rope. This is also in line with the theoretical findings that sigmoids are created by hot plasma along field lines in the vicinity of a quasi-separatrix layer formed in flux rope topology (Titov and Démoulin 1999).

In summary, the evolution of an active region prior to a CME involves the emergence of magnetic flux into the corona that is then modified by photospheric flows, which eventually disperse the field over an ever wider area. During the lifetime of the active region flux cancellation may be occurring that is able to modify the configuration of the magnetic field and allow free magnetic energy to buildup along polarity inversion lines. CMEs can occur at any point during this evolutionary sequence although the frequency of CMEs is highest at times of new flux emergence (Green et al. 2003).

2.1.2 Short-Term Evolution Prior to Eruption

Collated observations of the evolution of CME source regions in the tens of minutes before an eruption reveal that the magnetic structure evolves through distinct dynamic phases. The majority of CMEs exhibit a slow-rise phase, a phase of rapid acceleration and then a phase where the erupting structure propagates into the heliosphere (Zhang et al. 2001; Vršnak 2001). The slow rise phase occurs over timescales of minutes to hours and can be observationally identified through the upward motion of a filament or the expansion of coronal loops. The phase of rapid acceleration then occurs and signals that the eruption is in progress. During the propagation phase the CME interacts with the ambient solar wind (Vršnak et al. 2008). Here we describe the short-term evolution in the hours or minutes leading up to the phase of rapid acceleration.

It has been realised for many years that the magnetic field configuration associated with a sigmoid is highly likely to erupt (Canfield et al. 1999), however an exact observational definition of a sigmoid has not yet been reached. The term is used to describe continuous S-shaped structures and also collections of loops that appear S-shaped overall. In the cases where a continuous S-shaped sigmoid is observed, an eruption follows around within around 14 hours (Green and Kliem 2014). Given the finding that continuous S-shaped sigmoids that form along polarity inversion lines with sustained flux cancellation are indicative of a low altitude flux rope, the data indicate that these flux ropes can form and remain stable on the Sun for several hours. Sigmoids are best observed near disk centre, so that projection effects do not mask their shape. There is a related set of observations at the solar limb that indicate the formation of flux ropes at a higher altitude, formed by coronal reconnection. These flux ropes appear to form from around 7 hours to 10 minutes before their eruption (Patsourakos et al. 2013; Cheng et al. 2011). A recent study identified such a flux rope near disk centre, allowing the photospheric magnetic field evolution to be observed and revealing that the flux rope formation was driven by flux emergence which exhibited rotational motions of the fragments in the leading polarity, one about the other (James et al. 2017). These photospheric motions and the corresponding evolution of the coronal field led to magnetic reconnection in the corona and the formation of the flux rope.

As the time of the eruption approaches observations reveal that coronal structures begin to rise, albeit slowly, before the main phase of acceleration. Filaments darken and start their

slow ascent from around 3 hours before their successful eruption (Martin 1980). More compact active region structures complete their slow rise phase more rapidly, taking as little as just a few minutes (e.g. Zharkov et al. 2011) before the structure undergoes rapid acceleration.

2.1.3 Evolution of the Eruption in the Lower Corona

Over many decades, observations of the onset and evolution of the eruption of a CME in the lower corona have been drawn together to form the standard model for a CME or an eruptive flare. This model is also known as the CSHKP model after the authors of the early papers (Carmichael 1964; Sturrock 1966; Hirayama 1974; Kopp and Pneuman 1976). For a review of some of the many observational papers that have further supported this model see McKenzie (2002). The standard model of an eruption begins with the presence of a core field, either a sheared arcade or magnetic flux rope, embedded in an arcade field. Such sheared structures and flux ropes are well supported by observations from the photospheric vector magnetic field to EUV and soft X-ray emission structures in the corona. At the start of the eruption, the core field starts to rise, stretching the overlying arcade. A current sheet forms in the arcade below the core field, and reconnection sets in. Observations that support the occurrence of reconnection include the reconfiguration of the coronal field, indications of non-thermal particles from the formation of flare ribbons and hard X-ray emission, and reconnection inflow (McKenzie 2002). These observational signatures indicate that reconnection is closely related in time to the rapid acceleration phase of the CME. Indeed, the reconnection helps facilitate the eruption as it builds poloidal flux around the erupting core field and cuts the tethers of the overlying field. Flare loops form below the reconnection region as the downward product of the reconnection. Some CMEs show a clear rotation of the erupting structure as the eruption begins, indicating the presence of a flux rope and a conversion of twist into writhe (deformation of the axis of the flux rope, Green et al. 2007).

Not all CMEs that are initiated make it to a full eruption (Rust 2003). Instead, their rapid ascension is arrested in the lower corona. This sub-set of events are known as failed eruptions or confined eruptions. The failure of the eruption might be due to the reconnection that occurs below the erupting core field not sufficiently cutting the tethers of the overlying arcade field (Moore et al. 2001) or the field strength in the overlying arcade not dropping off sufficiently rapidly with height (Török and Kliem 2005). However, failed eruptions still serve a useful purpose in CME studies as they allow an investigation of the triggers versus the drivers of an eruption. In a failed eruption, presumably the trigger occurs, but the physical processes needed to drive the CME into the heliosphere do not (see Sect. 2.2.2).

2.2 Theory and Simulations

From a theoretical point of view, there is little doubt that large-scale solar eruptions are magnetically driven, since they originate in the corona where the plasma beta (ratio of gas to magnetic pressure) is small. They are powered by the free magnetic energy that is stored in the corona in non-potential magnetic fields, i.e., in volumetric electric currents. These currents are believed to emerge from the convection zone (e.g., Leka et al. 1996) or be produced by photospheric flows that shear and twist the coronal magnetic field (e.g., Klimchuk and Sturrock 1992). Eruptions occur when the slow, continuous stressing of the coronal field by flux emergence and surface flows reaches some threshold above which magnetic equilibrium cannot be maintained and the field violently erupts (Forbes 2000). While this overall picture is well established, the detailed processes that govern the evolution prior to and during an

eruption are not yet fully understood. In this subsection, we thus focus on the following three questions: How is the free energy built up in the corona? (Sect. 2.2.1) How are solar eruptions initiated? (Sect. 2.2.2) What are the physical mechanisms that can propel the magnetic field and plasma into interplanetary space? (Sect. 2.2.3) We will also discuss potential connections between individual eruptions (leading to “sympathetic” events) in Sect. 2.2.4.

2.2.1 *Modelling the Build-up of Free Magnetic Energy*

Non-potential magnetic fields are at the epicenter of solar eruptive behavior. Eruptions may originate from large-scale relatively weak magnetic fields as in the case of streamer blowouts or quiescent prominence eruptions (Hundhausen 1993; Lynch et al. 2010) or they may originate from strong active region magnetic fields. Whatever the circumstances, solar eruptions originate from strongly non-potential fields where the photospheric magnetic field is nearly parallel to the polarity inversion line (PIL), a so-called magnetic shear (e.g. Forbes 2000; Schrijver 2009), which stands in contrast to a potential field that runs perpendicular to the PIL and has no free energy. There is enormous evidence for the existence of highly sheared magnetic fields associated with CMEs and large flares. At the photosphere, magnetic shear in CME-productive active regions is directly measurable with vector magnetographs (e.g. Hagyard et al. 1984; Zirin and Wang 1993; Falconer et al. 2002; Yang et al. 2004; Liu et al. 2005; Sun et al. 2012) and the associated shear flows can be observed along the photospheric PIL (e.g. Strous et al. 1996; Yang et al. 2004; Deng et al. 2006; Sun et al. 2012).

With such observations in mind, MHD simulations of solar eruptions have long invoked shear flows prescribed as boundary conditions to energize magnetic fields to produce large-scale solar eruptions. Many examples exist including simulations by Steinolfson (1991), Mikic and Linker (1994), Wolfson (1995), Antiochos et al. (1999), Amari et al. (2003a), Lynch et al. (2008), van der Holst et al. (2009), which are successful in reproducing many characteristics of CMEs, filament eruptions and flares. CME-like eruptions have also been modelled with prescribed rotational flows that twist up the field (e.g., Amari et al. 1996; Török and Kliem 2003; Aulanier et al. 2005, see also Table 1). A significant limitation of these numerical models is that because of the enormous differences in plasma conditions, they all treat the corona as being disconnected from the solar interior. While this simplification greatly reduces computational costs, it also removes any possibility of elucidating the physical processes that by their very nature transport free magnetic energy and magnetic helicity from the solar interior to the corona.

In contrast, simulations of magnetic flux emerging from the convection zone to the corona set the stage to understand how active region magnetic fields are organized and energized. Global-scale simulations of the solar convection zone have shown how magnetic fields are amplified by the dynamo to produce buoyant loops that capture active region characteristics such as Joy’s law and sunspot asymmetries (e.g. Spruit and van Ballegooijen 1982; Abbett et al. 2001; Fan and Fang 2014; Nelson et al. 2014). However, constraints in timescale and numerical resolution prevent these simulations from reaching beyond 95% of the solar radius. To incorporate the upper layers of the solar atmosphere, fully compressible MHD models are applied on small scales in Cartesian domains (e.g. Shibata et al. 1989; Matsumoto et al. 1993) that illustrate magnetic flux buoyantly rising through solar photosphere to the corona. Simulations that followed (Manchester 2001; Fan 2001; Magara and Longcope 2003; Török et al. 2014) found that under these circumstances, shear flows develop spontaneously where horizontal flows reverse direction across emerging loop structures. An analytical model by Manchester and Low (2000) first showed that these shear flows are in response to the Lorentz force, which occurs as magnetic fields rise through the stratified

atmosphere and are deformed by the intense pressure gradient of the surrounding plasma. The shearing motions are of the form of large-amplitude shear Alfvén waves where magnetic tension drives the flows that draw the magnetic field along the direction parallel to the polarity inversion line and transport magnetic flux and energy from the convection zone into the corona. Manchester (2003, 2007), Manchester et al. (2004a) found that such shear flows are capable of driving eruptions of magnetic arcades and emerging flux ropes and proposed this mechanism as an energy source and initiation mechanism for CMEs.

Early simulations of flux emergence treated the solar interior as a simple polytropic layer, which roughly captured the temperature structure and density but was free of convection. In recent years, realistic solar models with granular convective and coronal atmospheres have been developed with the inclusion of radiative transfer and heat conduction. Examples include Stein and Nordlund (2006), Abbett (2007), Rempel et al. (2009), Nordlund et al. (2009), Martínez-Sykora et al. (2009), Cheung et al. (2010), Fang et al. (2010), Kitiashvili et al. (2010), which illustrate the complex and dynamic interaction between magnetic fields and granular convection. Work in this vein began with quiet sun magneto-convection (e.g. Stein and Nordlund 2006; Abbett 2007; Rempel 2014), which shows the development of a near-surface dynamo and formation of kiloGauss flux tubes in convective downdrafts. In related work, Martínez-Sykora et al. (2009), Kitiashvili et al. (2010) found strong vortex flows in downdrafts at the vertices of convective granules where the twisting magnetic field produces strong outflows representative of spicules. The inclusion of strong large-scale vertical magnetic fields in the presence of convective flows leads to the formation of sunspots as shown by Rempel et al. (2009), Cheung et al. (2010), Rempel and Cheung (2014).

Following this work, came realistic simulations of flux emergence and active region formation in a fully convective layer (e.g. Fang et al. 2010, 2012b; Cheung et al. 2010; Rempel and Cheung 2014). In the convection zone, high-plasma beta magnetic flux is severely distorted as distinct parts of the flux system rise and fall with the large-scale convective flows. As flux passes through the photosphere, it is shredded by the granular convection only to later reorganize as like polarities coalesce into kiloGauss pores and sunspots (Fang et al. 2012b; Cheung et al. 2010; Rempel and Cheung 2014). Even with this complex structure the Lorentz force continues to drive both shear and rotational flows that transport magnetic flux, helicity and free magnetic energy from the convection zone just as found in earlier simulations. In the case of Fang et al. (2012a), it was also found that while rotational flows provide free energy in the area of sunspots, shear flows dominate the energy build-up at the PIL. Fang et al. (2012a) further found that converging motions, flux cancellation and tether-cutting reconnection can combine to build-up the magnetic shear and free energy in the corona necessary for eruptive events. In this case, nearly 40% of the magnetic energy is free energy, which is near the amount required to produce eruptions (Amari et al. 2003a; Aulanier et al. 2010; Moore et al. 2012).

Recent observations are proving that the ubiquitous shear and rotational flows so strongly associated with CMEs produced during an active region's emergence phase are driven by the Lorentz force. Analysis of high-resolution vector magnetograms (Georgoulis et al. 2012) indicate that photospheric electric currents generate the Lorentz force that drives shear flows along active region PILs during this phase. Similar analysis by Su et al. (2008) has revealed that the Lorentz force is the driver of rotational flows in sunspots. In these cases, the flows are shown to produce a build-up of magnetic energy with magnetic stress passing from the convection zone into the corona to form non-potential fields. These observational results both verify prior numerical simulations and confirm a fundamental mechanism for energizing coronal magnetic fields before eruption.

Simulation results of the development of shear flows, sheared magnetic fields, Poynting flux and an erupting flux rope are shown in Fig. 3. Panel (a) shows the results of a

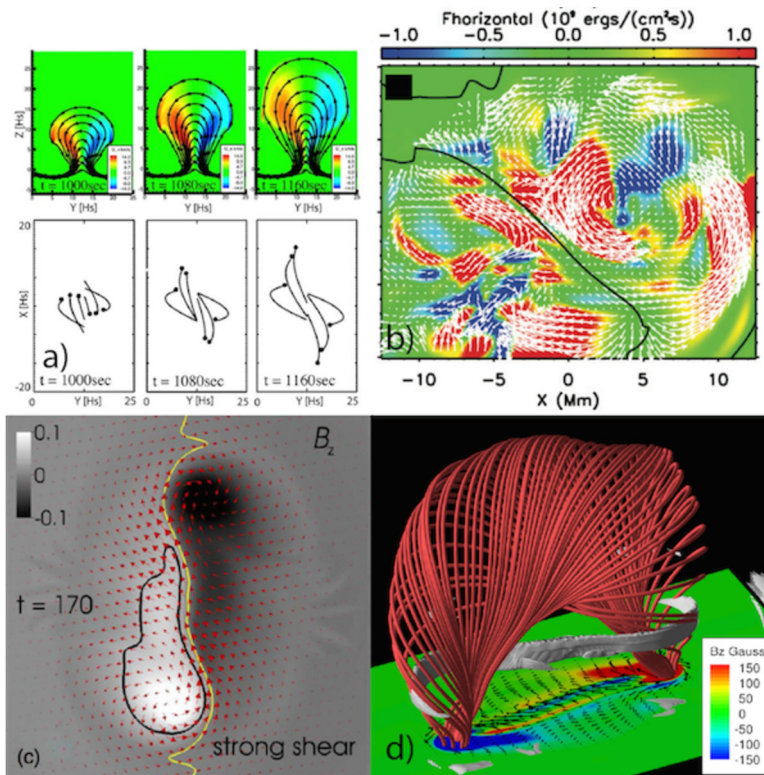


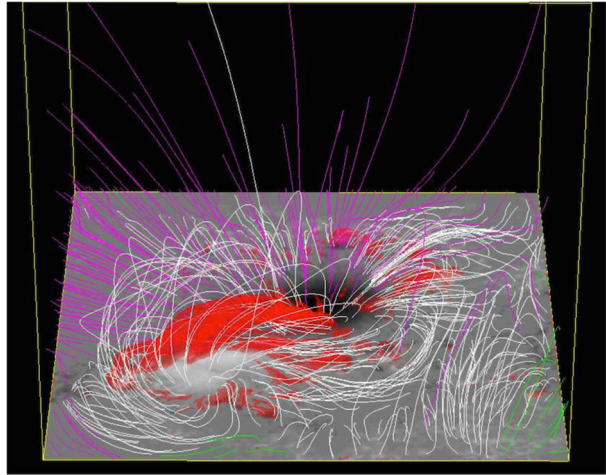
Fig. 3 Simulations of shear and rotational flows, energy transport, and magnetic flux-rope eruption. Panel (a) Manchester (2001) shows a 2.5D simulation of flux emerging, with the *top row* showing the shear velocity shown over the cross section of the emerging loop, and the *bottom row* showing the legs of the loops where *dots* are at the foot points. Panel (b) Fang et al. (2012a) shows the Poynting flux associated with horizontal flows passing through the corona. *White arrows* show the velocity vectors. Panel (c) Török et al. (2014) shows late-phase signatures of an emerged magnetic flux rope at the photosphere. *Red arrows* show the horizontal magnetic field direction while the *yellow line* shows the PIL. Note the magnetic shear with the alignment of the magnetic field with the PIL. Panel (d) Manchester et al. (2004a) shows the eruption of the flux rope resulting from shear flows. At the photosphere, the vertical magnetic field strength is shown in *color* and the horizontal direction is shown with *vectors*. Here, the current sheet is shown with a *gray iso-surface*, forming a sigmoid structure that runs nearly parallel to the highly sheared PIL.

2.5 D simulation of flux emergence that shows the development of sheared magnetic fields (Manchester 2001). Panel (b) shows the Poynting flux associated with horizontal flows passing into the corona (Fang et al. 2012a) while Panel (c) shows the development of a highly sheared magnetic field resulting from flux emergence (Török et al. 2014). Panel (d) shows the magnetic field of an erupting magnetic flux rope, where the eruption is triggered by shear flows driven by the Lorentz force.

2.2.2 Initiation Mechanisms of Solar Eruptions

As described in the previous sections, solar eruptions are powered by the free magnetic energy that is stored in current-carrying magnetic fields in the corona. Prior to an eruption,

Fig. 4 Non-linear force-free field extrapolation of NOAA AR 10930 before it produced an X3.4 flare and CME (from Schrijver et al. 2008a). *Red iso-surfaces* show electric currents. *Coloured (white)* field lines are open (closed). Closed field lines arch over the currents, stabilizing the sheared or twisted core magnetic field



the magnetic configuration essentially consists of two parts. One part is the current-carrying (sheared and/or twisted) core field, which is always located above a polarity inversion line and which may or may not harbor a filament. This field naturally seeks to expand and must therefore be stabilized by the other part of the configuration, namely by the largely current-free (potential) ambient field that surrounds the core field (often referred to as the “strapping field”), as illustrated in Fig. 4. The idea underlying many eruption-models is that an eruption can be initiated by any physical mechanism that is capable of bringing this configuration to a state at which stable equilibria cease to exist and the system violently erupts, thereby releasing some of the stored free energy. The initiation mechanism could be one that either increases the current in the core field or decreases the stabilizing magnetic tension of the ambient field, or both (see, e.g., Aulanier 2014).

However, even though eruptions have been observed extensively for many years, the specific build-up and trigger mechanisms, and the mechanisms that drive CMEs remain rather elusive. This is, to a large extent, due to the persistent lack of routine magnetic field measurements in the corona. Analytical models and numerical simulations provide a useful tool for our attempts to close this gap. These approaches typically employ idealized initial configurations and a reduced set of the MHD equations, both of which are strong simplifications of reality. However, such a simplified approach has two significant advantages. On the one hand, it often allows one to isolate in the model the specific mechanism of interest. On the other hand, it keeps the computational costs moderate and thus provides the possibility of performing extensive parametric studies. Such studies are useful because they allow, for example, an assessment of physical quantities that are difficult or impossible to measure in the corona, such as magnetic twist (e.g., Kliem et al. 2012). In the past decades, idealized analytical models and numerical simulations have been widely used to test and study suggested eruption mechanisms, and have thereby greatly increased our understanding of how solar eruptions work. We note that significantly more complex MHD simulations of eruptions exist as well. These simulations include observed data and more of the physics, and they are aiming to reproduce specific eruptions with as much realism as presently possible (see Manchester et al. in this issue).

Table 1 shows a compilation of eruption models of the so-called “storage and release” type, together with references and a compilation of review papers on the subject.¹ Storage-and-release models assume that the free energy required to power an eruption is slowly (i.e., quasi-statically) accumulated in the corona over hours or days, and then rapidly released during the eruption. “Directly driven” models, such as thermal blasts during flares or flux injection from the solar interior, appear outdated and are not considered here (for discussions of their validity see, e.g., Forbes 2000, Klimchuk 2001, Linker et al. 2003; but see also Chen 2017). Furthermore, the table does not include eruption scenarios that have, to the best of our knowledge, not yet been tested using numerical simulations. Such scenarios are, for instance, the triggering of eruptions by the merging of magnetic flux ropes (e.g., Pevtsov et al. 1996) or by the unloading of prominence mass (e.g., Low 1996; Seaton et al. 2011), as well as the conjecture that CMEs occur in order to avoid an over-accumulation of magnetic helicity in the corona (e.g., Low 1994).

The mechanisms are grouped according to their predominant role in the eruption process, i.e., whether they act as a “trigger” or as a “driver”.² By driver we mean here any mechanism that can account for the rapid acceleration and huge expansion of plasma and magnetic field observed during eruptions, i.e., a mechanism that can produce a CME. As a trigger, on the other hand, we consider mechanisms that are capable of initiating an eruption, but can by themselves not produce a CME. The role of a trigger is rather to bring the system to a state at which a driver can take over and complete the eruption.

Such a strict distinction between trigger and driver is somewhat artificial, but we use it here for the following reasons. First, rise profiles of eruptions sometimes clearly show two distinct phases that cannot be fitted with one functional form (see Sect. 2.1.2 and e.g., Sterling et al. 2007a,b; Schrijver et al. 2008b), indicating the occurrence of two distinct physical mechanisms. Second, it has been demonstrated in MHD simulations that certain mechanisms (such as tether-cutting and magnetic breakout) do not seem sufficient for producing a full eruption (e.g., Aulanier et al. 2010; Karpen et al. 2012). Finally, some mechanisms do not appear to be capable of producing a CME, just by their nature. The helical kink instability, for example, is expected to lead to a (relatively moderate) deformation of the shape of an unstable flux rope, but not to its huge expansion.

We note that some of the processes listed as a trigger mechanism in Table 1 (flux emergence, sunspot rotation, flux cancellation) typically act on time-scales of days, much longer than the typical duration of the slow rise phase preceding eruptions. Their preliminary role is to accumulate free energy in the corona (see Sect. 2.2.1). However, as demonstrated by the numerical simulations referenced in the table, they can also, on shorter time scales, induce changes to the system that push it towards an eruption (an example would be flux emergence into an existing pre-eruptive configuration). In that sense it appears justified to consider these processes not just as build-up, but also as trigger mechanisms.

At present, it seems that there may exist only two driving mechanisms in solar eruptions, namely the torus instability and the “flare reconnection” (for a somewhat different view, see Aulanier 2014). The latter is the reconnection that takes place across the vertical current sheet below a CME and produces the flare signatures. The torus instability is an ideal MHD instability, closely related to the processes known as “flux-rope catastrophe” and “loss of equilibrium” (see Démoulin and Aulanier 2010 and Kliem et al. 2014a for a detailed discussion). In this instability, the driver responsible for the acceleration of the ejecta is the hoop

¹This table is not intended to be complete, more mechanisms and articles may be found in the literature. See Aulanier (2014) for the differences between “flux decrease” and “flux dispersion” models.

²Any such grouping is somewhat subjective. Aulanier (2014), for example, considers magnetic breakout rather than flare-reconnection as the second driving mechanism next to the torus instability.

Table 1 Compilation of suggested physical mechanisms of the “storage-and-release” type for the triggering and driving of solar eruptions. “FE” stands for flux emergence. Note that (i) we do not distinguish here between 2D and 3D simulations; (ii) we do not include simulations that model CMEs by starting with an “out-of-equilibrium” flux-rope configuration (e.g., Roussev et al. 2003; Manchester et al. 2004b; Tóth et al. 2007; Cohen et al. 2009; Lugaz et al. 2011; Pagano et al. 2013), even though they are compatible with the storage-and-release paradigm; and that (iii) each article is referenced only once, even if the model or scenario it describes involves more than one mechanism. The *bottom row* contains related review articles

Mechanism	References
<i>TRIGGER:</i>	
Sunspot rotation	Amari et al. (1996), Tokman and Bellan (2002), Török and Kliem (2003), Aulanier et al. (2005), Rachmeler et al. (2009)
Twisting overlying field	Török et al. (2013)
Shearing of arcade	Mikic et al. (1988), Biskamp and Welter (1989), Mikic and Linker (1994), Choe and Lee (1996a,b), Amari et al. (1996a), Jacobs et al. (2006, 2009), Roussev et al. (2007), Shiota et al. (2008), Downs et al. (2011)
Reversed shear	Kusano et al. (2004)
Self-induced shear flows	Manchester (2003, 2007), Manchester et al. (2004a)
Magnetic breakout	Antiochos et al. (1999), MacNeice et al. (2004), Lynch et al. (2004, 2008), van der Holst et al. (2007, 2009), Masson et al. (2013)
Tether cutting	Moore and Roumeliotis (1992), Moore et al. (2001), Aulanier et al. (2010)
Converging flows / Flux cancellation	Inhester et al. (1992), Amari et al. (2003a), Roussev et al. (2004), Zuccarello et al. (2012), Mikić et al. (2013)
Flux decrease / dispersion	Lin et al. (1998), Linker et al. (2001, 2003), Amari et al. (2000, 2003b), Titov et al. (2008), Reeves et al. (2010)
FE close/below flux rope	Chen and Shibata (2000), Lin et al. (2001), Shiota et al. (2005), Dubey et al. (2006)
FE into potential arcade	Zuccarello et al. (2008), Jacobs and Poedts (2012), Roussev et al. (2012)
FE into sheared arcade	Notoya et al. (2007), Kusano et al. (2012)
Helical kink instability	Sakurai (1976), Hood and Priest (1979), Gerrard et al. (2001), Fan and Gibson (2003), Török et al. (2004), Török and Kliem (2005)
Flux transfer/feeding	Zhang et al. (2014), Kliem et al. (2014b)
Tilt instability	Keppens et al. (2014)
Double-arc instability	Ishiguro and Kusano (2017)
<i>DRIVER:</i>	
Torus instability / Flux-rope catastrophe / Loss of equilibrium	van Tend and Kuperus (1978), Priest and Forbes (1990), Forbes and Isenberg (1991), Lin et al. (1998), Kliem and Török (2006), Török and Kliem (2007), Fan and Gibson (2007), Olmedo and Zhang (2010), Démoulin and Aulanier (2010), Kliem et al. (2014a)
Flare-reconnection	Lin and Forbes (2000), Vršnak (2008), Temmer et al. (2010), Karpen et al. (2012)
<i>Review articles:</i>	Forbes (2000), Chen (2001), Klimchuk (2001), Low (2001), Priest and Forbes (2002), Lin et al. (2003), Linker et al. (2003), Zhang and Low (2005), Forbes et al. (2006), Moore and Sterling (2006), Mikić and Lee (2006), Roussev (2008), Vršnak (2008), Amari and Aly (2009), Linton and Moldwin (2009), Schrijver (2009), Aulanier et al. (2010), Chen (2011), Jacobs and Poedts (2011), Kleimann (2012), Schmieder et al. (2013, 2015), Aulanier (2014), Inoue (2016), Chen (2017)

force or Lorentz-self force, which results from the curvature of a current-carrying flux rope (e.g., Titov and Démoulin 1999). The flare reconnection, on the other hand, can drive the eruption in several ways. For instance, by transferring restraining overlying flux into flux of the erupting sheared core or flux rope, or by producing highly bent field lines in a rope that accelerates it by means of a slingshot effect (e.g., Linton et al. 2001; Mackay and van Ballegooijen 2006; Archontis and Török 2008). These two processes (instability and reconnection) often occur simultaneously and are closely coupled (e.g., Bein et al. 2012; Vršnak 2016, see also Sect. 2.2.3). Their respective contributions to the acceleration of the ejecta are presently not well known; they likely depend on various parameters and may therefore differ from case to case. Disentangling the contributions is not trivial and poses a challenge for modellers. As we will see in the next section, it appears that at least the most impulsive eruptions are driven predominantly by reconnection.

As apparent from Table 1, many more trigger mechanism than driving mechanisms seem to exist. Rather than describing all the trigger mechanisms that have been suggested, we only give a few general remarks here, noting that more detailed explanations can be found in the references compiled in Table 1. First of all, trigger mechanisms should not be thought of as acting in isolation or being mutually exclusive. It is likely that several of them work together, simultaneously or successively, in starting an eruption (e.g., Williams et al. 2005). Unfortunately it is often difficult, if not impossible, to pin down which particular mechanism or combination of mechanisms triggered a specific eruption. Most mechanisms cannot be observed directly, so indirect evidence such as EUV brightening or the slow rise of a filament must be used. Also, the same observational manifestations may be produced by different mechanisms. This lack of detailed knowledge greatly hampers our capabilities to forecast the onset of eruptions (see Sect. 3), as different trigger mechanisms may have very different onset conditions. Moreover, even if one could predict that a certain trigger mechanism will take place, it would still be hard to predict whether an eruption will produce a CME or remains confined (e.g., Moore et al. 2001; Török and Kliem 2005; Guo et al. 2010) as we know little about the conditions under which trigger mechanisms can succeed in switching on driving mechanisms. In fact, it seems that, at least in some events, several confined eruptions are required before a full eruption can occur (e.g., Panesar et al. 2015; Chintzoglou et al. 2015; Liu et al. 2016).

Overall, observations and simulations have helped us to develop a relatively clear qualitative picture of how a typical solar eruption works. Slow magnetic reconnection acting below (potentially also above) a sheared or twisted core field results in a slow rise of this field. During this slow rise, the core field successively detaches from the photosphere, reconnection occurs at increasingly larger heights in the corona, and the field successively transforms from a structure that was initially probably more like an arcade into a flux rope. Once the rope has been lifted to a sufficiently large height, the torus instability sets in and starts to rapidly accelerate the rope upward. More or less simultaneously, the flare reconnection sets in and supports the rapid acceleration. What is still needed, though, is a better understanding of the onset conditions, efficiency, and interplay of the underlying mechanisms. In the next sub-section, we will use some general considerations and an analytical approach to dig deeper into the physics behind driving mechanisms and the acceleration of CMEs.

2.2.3 Eruption Driving Mechanisms and Physical Background

The free magnetic energy contained in the coronal field can be expressed in the form $W = LI^2$, where I is the total electric current flowing through the system and L is the self-inductance that includes information on the entire magnetic-field geometry (e.g., Garren and Chen 1994; Chen 1989; Chen and Krall 2003; Jackson et al. 2004; Žic et al. 2007,

and references therein). Depending on the desired complexity of the model, an otherwise intricate coronal magnetic configuration is represented in the analytical approach as a simple line current, a flux rope, a flux rope embedded in a magnetic arcade, etc. In the process of an eruption, the free magnetic energy is explosively released and transformed into kinetic and gravitational potential energy. In addition, if the eruption is accompanied by a flare, part of the energy is consumed for various thermal and non-thermal processes (heating, convective flows, non-thermal particle populations, etc.). Finally, as the speed of the eruption increases, progressively more and more energy is spent for the work against the “aerodynamic” drag. Let’s now go on to consider the maximum velocity and acceleration that a CME can attain.

Bearing in mind energy conservation, one can relate the kinetic energy density and the magnetic field energy density as $\rho v^2/2 < B^2/2\mu$, where ρ , v , B , and μ are the plasma mass-density, flow speed, magnetic field strength, and permeability, respectively. This relation can be rewritten as $v < B/\sqrt{\rho\mu}$, i.e., $v < v_A$, where v_A is the Alfvén speed *within* the erupting structure. Consequently, it is expected that eruptions from active regions should attain higher speeds than those occurring in quiet-sun regions, which is fully consistent with observations (e.g., Vršnak et al. 2005; Bein et al. 2011, 2012, and references therein).

The CME acceleration is driven by the Lorentz force, or formulated in a more simplified way, by the gradient of the magnetic pressure $\nabla(B^2/2\mu)$. Taking an order of magnitude estimate for the magnetic pressure as $\nabla(B^2/2\mu) \approx B^2/2d\mu \approx f_L$, where d is the size of the structure and f_L is the Lorentz force *per* unit volume, the acceleration can be expressed as $a = f_L/\rho = B^2/2d\rho\mu$, i.e., $a \approx v_A^2/2d$. This implies that the acceleration of a CME is limited by the intrinsic Alfvén speed, and that the acceleration should be larger in compact eruptions than in extended ones. Indeed, in eruptions of active-region structures, where the Alfvén speed is high and the source region is rather compact, the acceleration is usually much larger than in eruptions from quiet-sun regions (e.g. eruptions of quiescent prominences, stealth CMEs; see, e.g., Vršnak et al. 2005; Bein et al. 2012; Howard and Harrison 2013). Note that the relation $a \approx v_A^2/2d$ implies that in the case of very compact sources, $d < 100$ Mm, accelerations can achieve values on the order of 10 km s^{-2} , such as is observed in the most impulsive events (Vršnak et al. 2007; Bein et al. 2011).

Using these estimates for the maximum velocity and acceleration, one can also roughly estimate the time and distance over which an eruption will be accelerated. The acceleration time can be expressed as $t_a \approx v/a$, implying $t_a \approx d/v_A = t_A$, where t_A represents the Alfvén travel time over the eruptive structure. The acceleration, a , speed, v , and the acceleration distance, d_a , can be related as $a \approx \sqrt{2ad_a}$, implying $d_a \approx v^2/2a = d$, i.e., the acceleration distance should be comparable with the size of the eruptive structure. Indeed, both types of relationships $t_a \propto d$ and $d_a \propto d$, as well as $t_a \propto 1/a$, are found in observations (Vršnak et al. 2007; Bein et al. 2011). Furthermore, it is well known that eruptions originating from active regions (smaller size, higher Alfvén speed) are more impulsive (stronger acceleration over a shorter acceleration time) than those launched from quiet-sun regions (Zhang and Dere 2006; Vršnak et al. 2007; Bein et al. 2011), consistent with $t_a \approx d/v_A$ and $a \approx v_A^2/2d$. Characteristic values for active-region and quiescent-prominence eruptions, based on the presented order-of-magnitude relations, are displayed in Table 2.

Let us now consider some general aspects related to the evolution of an eruption. The self-inductance L is primarily dependent on the size d of the current-carrying structure, $L \propto d$ (Jackson et al. 2004). Thus, as an erupting structure expands, the self-inductance increases, and it can be approximately taken that d is proportional to the heliospheric distance r , i.e., $d \propto r$. Under this assumption $L \propto r$. On the other hand, the self-inductance of the magnetic structure is by definition related to the electric current as $\Phi = LI$, where Φ is the magnetic flux associated with the current I (see, e.g., Batygin and Toptygin 1962; Žic et al. 2007).

Table 2 Typical values for active region (AR) and quiescent prominence (QP) eruptions. The size of the CME source structure is given by d , the Alfvén speed within the erupting structure by v_A , velocity by v , acceleration by a , acceleration duration by t_a and distance over which the structure is accelerated by d_a

	d [Mm]	v_A [km s ⁻¹]	v [km s ⁻¹]	a [m s ⁻²]	t_a [s]	d_a [Mm]
AR	100	1000	1000	10000	100	100
QP	1000	400	400	160	2500	1000

In the absence of dissipative processes that could lead to magnetic reconnection, the flux Φ stays preserved, implying that the electric current has to decrease as $I \propto 1/r$. This means that the free magnetic energy of the system, $W = LI^2$, decreases, being transformed into the kinetic energy and the work done against drag and gravity.

In line with the magnetic origin of an eruption, the CME acceleration is driven by the Lorentz force, or formulated in a simplified way, by the Ampère force $\mathbf{F} = \mathbf{I} \times \mathbf{B}$. Consequently, in the absence of reconnection, the driving force of a CME rapidly decreases with distance from the Sun, because both the electric current I and the magnetic field B protruding through the magnetic structure decrease (for the dependence of the magnetic field on height see, e.g., Dulk and McLean 1978; Gary 2001; Vršnak et al. 2002, 2004a; Liu 2008). Indeed, observations indicate that the driving force decreases approximately as $r^{-\alpha}$, where the exponent ranges between $\alpha \approx 1$ and 2 (Vršnak 2001, 2006; Vršnak et al. 2004c). In other words, the inductive effects and the decrease of the magnetic field with height, act to prevent a very strong acceleration happening over a large time and distance range.

The general physical principles that govern the eruption process described here should be incorporated in any quantitative model, no matter what the specific magnetic configuration is. Most often, the eruptive structure is represented by a semi-toroidal magnetic flux rope that is fixed at both ends in the photosphere. It is worth noting that the flux-rope concept has been in use since before the discovery of CMEs, i.e., in early models of solar flares and eruptive prominences (e.g., Gold and Hoyle 1960; Ellison et al. 1961; Gold 1962; Byrne et al. 1964; Hyder 1967; Anzer and Tandberg-Hanssen 1970). Gradually, flux-rope models developed from very simple ones (e.g., Kuperus and Raadu 1974; Mouschovias and Poland 1978; Sakurai 1976; Anzer 1978; van Tend and Kuperus 1978; Anzer and Pneuman 1982; Pneuman 1980; Vršnak 1984; Steele and Priest 1989) to more complex forms, where various relevant effects have been sequentially taken into account (e.g., Chen 1989; Vršnak 1990; Titov and Démoulin 1999; Török and Kliem 2003). In addition, the development of numerical techniques has provided more demanding studies, beyond those provided by the analytical approach.

Now we focus on the implications of the basic physical principles that have just been discussed as applied to the flux rope concept of an eruption. To do so, let us consider the forces acting on a semi-toroidal magnetic flux rope, sketched in Fig. 5a. In such a configuration, several effects have to be considered. First, the curvature of the flux rope axis causes the Lorentz self-force (also known as “hoop force”). The contribution of the self-force to the equation of motion was firstly estimated by applying the “virtual work” principle (e.g., Shafranov 1966; Garren and Chen 1994). Hereafter, we will follow the procedure proposed by Vršnak (1984) and Vršnak (1990), where the self-force is estimated considering directly the Lorentz force components related to the magnetic pressure gradient and tension (sketched in the upper right and left corners of Fig. 5a).

Next, one has to take into account a diamagnetic effect, which comes from the influence of eddy electric currents induced at the solar “surface”. In the simplest way, this effect can

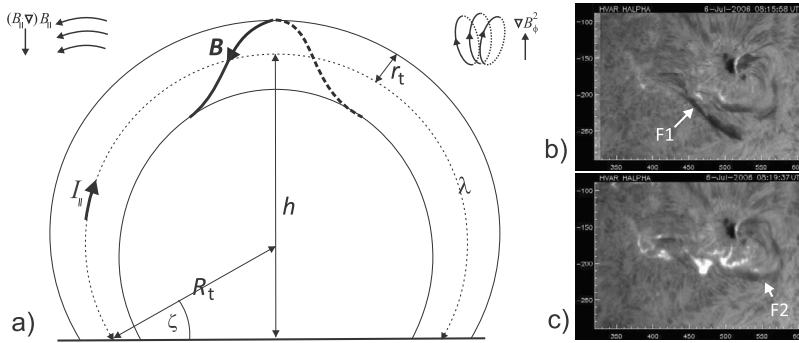


Fig. 5 a) Cartoon of a semi-toroidal flux rope with definition of symbols used in the text. In the *upper-left* and *upper-right* corner the effects of magnetic tension and pressure gradient are sketched, respectively. b) & c) Eruption of July 6, 2016: Filament F1 in a slow-rise phase (b), indicating a presence of a metastable flux rope, gradually evolving towards the loss-of-equilibrium state; The eruption of the filament F1 caused a flare below it (c) and destabilized the nearby (also metastable) filament F2 that erupted too, causing a westwards extension of the flare (Hvar Observatory filtergrams; x- and y-coordinates are shown in arcsec)

be roughly estimated by considering the effect of a line-current located at the height h above the conducting surface, as done by Kuperus and Raadu (1974). Furthermore, the flux rope concept includes an overlying coronal field (B_c), and the influence of this field must be taken into account. The effect depends on the orientation of the background field—in the case of the Kuperus–Raadu configuration (Kuperus and Raadu 1974), the force is directed downwards, whereas in the case of the Kippenhahn–Schlüter configuration (Kippenhahn and Schlüter 1957), the force is directed upwards.

Finally, one has to consider the effect of gravity. Taking into account buoyancy, the acceleration reads $a_g = -g(\rho - \rho_w)/\rho$, where g is the local gravitational acceleration and ρ and ρ_w represent the density of the CME and the ambient plasma, respectively. Note that in the case $\rho \approx \rho_w$ the gravitation can be neglected, and if $\rho < \rho_w$ then a_g becomes positive (i.e., acts upwards) (Low et al. 1982).

Let us now consider the stability of a flux-rope and the conditions under which it will erupt. Putting all the previously mentioned effects together leads to an expression for the net acceleration (for details of the derivation see Vršnak 2008, 2016):

$$a = \frac{C_L}{\Lambda} \left[\frac{1}{2\tilde{R}_t} - \frac{1}{\tilde{R}_t X^2} + \frac{1}{H} \right] - \frac{C_c}{\Lambda^2 \tilde{R}_t} - C_g g, \quad (1)$$

where \tilde{R}_t , Λ , and H represent the major radius of the semi-toroidal flux rope, the length of its axis, and the height of the axis summit, respectively, all normalized with respect to the footpoint half-separation (following the notation presented in Fig. 5a, one can write $\tilde{R}_t \equiv R_t/d$, $\Lambda \equiv \lambda/d$, $H \equiv h/d$, and $\tilde{r}_t \equiv r_t/d$). The parameter X represents the ratio of the poloidal and longitudinal magnetic field components, $X = B_\phi/B_\parallel$, at the surface of the flux rope (Fig. 5a). The first three terms on the right-hand side of (1), written within the square brackets, represent the effects of the magnetic pressure gradient, magnetic tension, and diamagnetic effect, respectively. The fourth term is due to the background field, whereas the last term considers gravity.

In (1), we took into account the previously inferred relation $I \propto 1/\lambda$, i.e., we express the current as $I = I_0 \lambda_0/\lambda$, where I_0 is the value of the axial current when the flux-rope axis is at the height $h = d$ (i.e., $R_t = h = d$, $\lambda = R_t \pi$, $\tilde{R}_t = H = 1$, $\Lambda = \pi$) and we considered

that the mass of the flux rope is $M = \text{const.}$ The constant $C_L = \mu I_0^2 \pi / 4M$ determines the overall “strength” of the eruption, and it shows that the CME acceleration is proportional to I_0^2 . Taking into account typical values of $M = 10^{12} - 10^{13}$ kg (e.g., Vourlidis et al. 2010; Webb and Howard 2012) and $I_0 = 10^{10} - 10^{11}$ A (e.g., Hofmann et al. 1992; Filippov et al. 2015, and references therein), it can be estimated that the value of C_L should typically range between 100 and 1000 m s^{-2} .

Furthermore, we assumed that B_c (background coronal magnetic field surrounding the rope) is uniform over the rope. So the flux conservation $B_c r_t \lambda = \text{const.}$, implies $B_c = B_{c0} r_{0t} \lambda_0 / r_t \lambda$. We note that in the absence of reconnection the eruptive structure should expand in a self-similar way, i.e., $r_t \propto R_t$ (Vršnak 2008), which means $B_c = B_{c0} R_{0t} \lambda_0 / R_t \lambda = B_{c0} \pi / \tilde{R}_t \Lambda$. Furthermore, we introduced a constant $C_c = I_0 B_{c0} \pi^3 d / M$, where we have taken into account $I \lambda = I_0 \lambda_0$, i.e., $I = I_0 \pi / \Lambda$. Taking typical values of $d = 100$ Mm and $B_{c0} = 0.1 - 1$ G (i.e., $10^{-5} - 10^{-4}$ T), together with the previously used values for I_0 and M , one finds C_c could be as large as $5 \times 10^4 \text{ m s}^{-2}$. In the case where the effect of a decrease of the background magnetic field with height is considered, B_{c0} should be replaced by, e.g., $B_c = B_{c0} (R_{0t} / R_t)^n = B_{c0} \tilde{R}_t^{-n}$, as is often used in treatments of the torus instability (e.g., Kliem and Török 2006; Démoulin and Aulanier 2010; Olmedo and Zhang 2010, and references therein). Under this approximation, the last term in (1) should be replaced by $C_c / \Lambda^2 \tilde{R}_t^{1+n}$.

To solve (1), one has to specify the relationship between the geometrical parameters \tilde{R}_t , H , and Λ . Using Fig. 5a, where we have included the angle ζ that represents the inclination of a line connecting a flux-rope footpoint and the center of curvature of the rope axis, one finds the parametric relationships $\tilde{R}_t = 1 / \cos \zeta$, $H = (1 + \sin \zeta) / \cos \zeta$, and $\Lambda = (\pi + 2\zeta) / \cos \zeta$. Taking into account that the poloidal-to-axial field ratio can be expressed as $X \equiv B_\phi / B_\parallel = 2\pi \tilde{r}_t / \Lambda$, (1) constitutes an explicit expression for the acceleration as a function of the angle ζ , and from that, one can establish a functional dependence $a(H)$.

Various solutions to (1) are given in Fig. 6. Several $a(H)$ curves are shown, following an increasing C_L (Fig. 6a and b) and X (Fig. 6c and d) sequence. The increase of C_L and/or X can be caused by various evolutionary processes related to the photospheric and subphotospheric motions. For example, twisting motions at the flux-rope footpoints would lead to a transport of poloidal flux into the rope (thus increasing X) and increase the electric current (thus increasing C_L). A similar effect may also be expected in the case of reconnection below the rope, which tends to increase the poloidal flux in the rope (see e.g., Vršnak 2016). The value of C_L could also be increased by emerging flux, since the increase of the total magnetic flux encircled by the current circuit associated with the rope would lead to an enhancement of the current. Finally, C_L might be increased by a mass leakage through the flux-rope legs, since $C_L \propto 1/M$.

The intercepts of the $a(H)$ curves with the x-axis are equilibrium points ($a = 0$). If the slope of the $a(H)$ curve, $\partial a / \partial H \equiv \omega^2$, at the equilibrium point is characterized by $\omega^2 < 0$ the equilibrium is stable (points denoted in Fig. 6b as H_1 , H_2 , H_3 , and H_4). If the rope is moved from this position, it will oscillate around it, with a period of $P = 2\pi / \omega$. Note that from the observational point of view, oscillations of coronal structures are especially well visualized in the case of prominence oscillations initiated by disturbances coming from distant eruptions, a phenomenon being reported as “winking filaments” a half of century ago by Ramsey and Smith (1966). Inspecting Figs. 6b and 6d, one finds that as the value of C_L or X increases, the equilibrium position shifts to larger heights (see the insets in Figs. 6b and 6d) and the oscillation period increases (the slope $\partial a / \partial H$ becomes less steep).

The x-axis intercepts of $a(H)$ curves characterized by $\partial a / \partial H > 0$ represent unstable equilibria. If the rope is displaced from a stable equilibrium to an unstable one (e.g., by

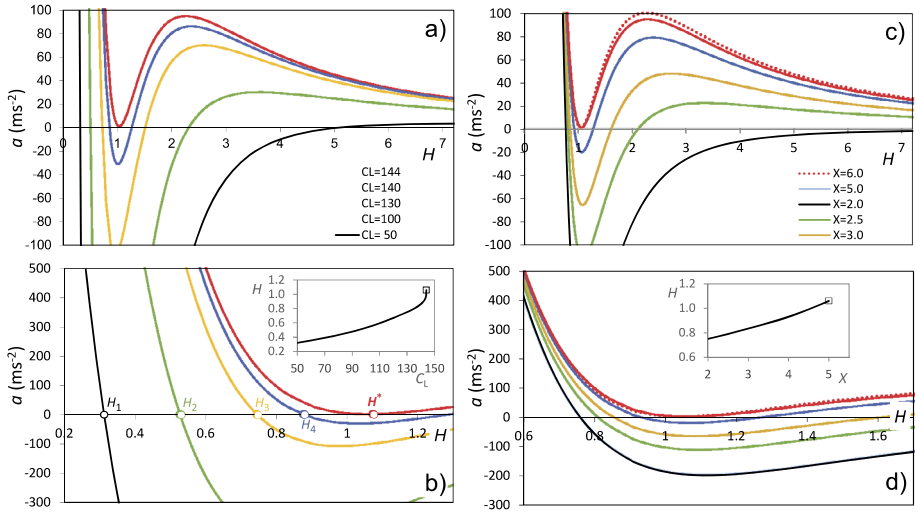


Fig. 6 Various solutions of (1), representing stable, metastable, and unstable ropes. **a)** $a(H)$ for various values of C_L (written in the legend), in combination with $X = 5$, $r_t/R_t = 0.1$, $C_c = 1.3 \times 10^4 \text{ m s}^{-2}$. **b)** Enlarged part of **a)** around equilibrium points; in the inset the equilibrium height H_e is shown as a function of C_L . **c)** $a(H)$ for various values of X (written in the legend), in combination with $C_L = 144 \text{ m s}^{-2}$, $r_t/R_t = 0.1$, $C_c = 1.3 \times 10^4 \text{ m s}^{-2}$; the red-dotted curve represents the case of $X = 6.0$ with $C_L = 143 \text{ m s}^{-2}$. **d)** Enlarged part of **c)** around equilibrium points; in the inset the equilibrium height H_e is shown as a function of X

a disturbance from a distant eruption), it will erupt. Thus, ropes that are characterized by $a(H)$ curves that have both types of x-axis intercepts are in a metastable state. Note that with increasing C_L or X , the distance between stable and unstable equilibria decreases, i.e., it becomes easier to push the rope from the stable to the unstable point and trigger the eruption. Finally, it should be noted that the $a(H)$ curve achieves the metastable form only for a sufficiently large value of X . This is illustrated in Fig. 6d, where the $a(H)$ curve for $X = 2$ (black curve) is shown, which is characterized by only one (stable) equilibrium point. The curve calculated for $X = 2.5$ (green curve) already contains the unstable equilibrium at $H \approx 2$. Thus, a value of X at which the magnetic structure transforms from stable to metastable configuration lies between 2 and 2.5; a more detailed analysis shows that for the considered combination of parameters ($C_L = 144 \text{ m s}^{-2}$, $r_t/R_t = 0.1$, $C_c = 1.3 \times 10^4 \text{ m s}^{-2}$) this transition occurs at $X = 2.2$.

The increase of C_L or X leads to another essential physical situation. As the $a(H)$ curves gradually shift “upwards”, at a given critical value of C_L^* or X^* , the stable and unstable equilibrium points merge (see the red curve in Fig. 6), after which there is no equilibrium possible. The local minimum in the $a(H)$ curve just touches the x-axis (in Fig. 6b this critical height is denoted as H^*), i.e., the whole $a(H)$ curve is located in the $a \geq 0$ region. Consequently, the rope erupts, dynamically trying to find a new equilibrium. In the case when the gravity is neglected ($C_g = 0$) a new equilibrium does not exist, and the rope erupts. Note that the critical value C_L^* is lower for a higher value of X . This is illustrated in Fig. 6c, where the loss-of-equilibrium curve for $X = 5$ (full-red line; $C_L^* = 144 \text{ m s}^{-2}$) is compared with the analogous curve for $X = 6$ (dotted-red line; $C_L^* = 143 \text{ m s}^{-2}$). An example of a metastable flux rope containing filament plasma, gradually evolving towards the loss-of-equilibrium stage and eruption, is presented in Fig. 5b. Filament F1 was slowly rising until

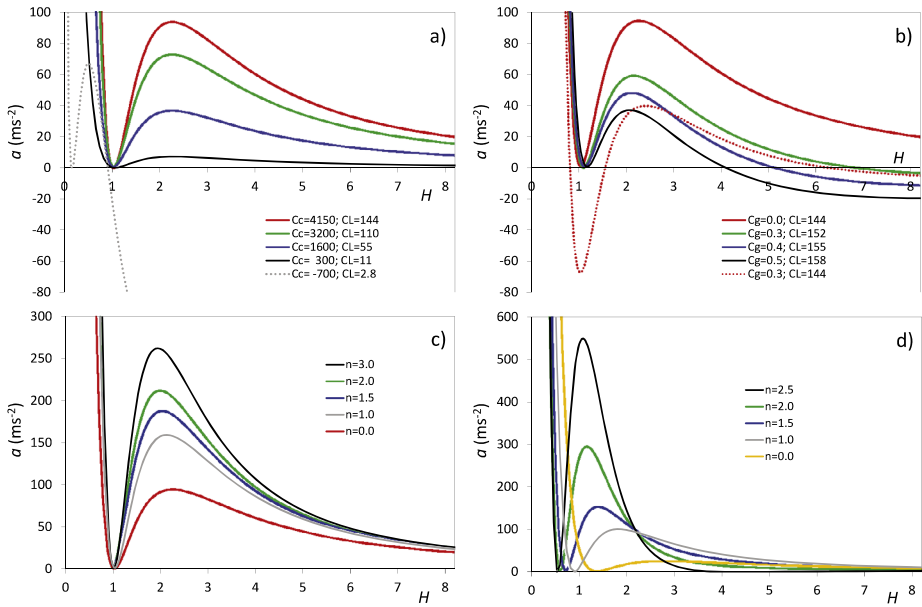


Fig. 7 Flux ropes in the loss-of-equilibrium state: **a)** $a(H)$ solutions for different levels of the background-field effect (values of C_c expressed in ms^{-2} are written in the *legend*, together with the corresponding critical values of C_L^* ; gray-dotted line represents Kippenhahn–Schlüter configuration with $C_g = 1$ ($IB_c < 0$, i.e., $C_c < 0$)). **b)** The gravity effect (values of C_g are written in the *legend*, together with the corresponding critical values of C_L^*) calculated using $d = 70$ Mm, $X = 5$, and $C_c = 13000 \text{ ms}^{-2}$. **c)** The effect of decreasing background field (values of the decay index n are given in the *legend*), calculated using $X = 5$, $C_L^* = 144 \text{ ms}^{-2}$, $C_c = 13000 \text{ ms}^{-2}$, and $C_g = 0$. **d)** The torus-instability effect (values of n are given in the *legend*), calculated using the same set of parameters as in **c)**

reaching a critical height, after which it erupted (Fig. 5c). Besides causing a flare below it, the eruption destabilized and triggered the eruption of the nearby metastable flux rope that was embedding the filament F2 (for details see Miklenic et al. 2009).

For a flux rope characterized by a given value of the poloidal-to-axial field ratio X , a critical value C_L^* at which the eruption starts depends on the relative contribution of the background magnetic field and the gravity. In other words, it depends on the values of C_c and C_g , which is illustrated in Figs. 7a and 7b, respectively.

In Fig. 7a we present four loss-of-equilibrium $a(H)$ curves calculated for different values of $C_c > 0$ and the corresponding values of C_L^* , applying fixed values $X = 5$ and $C_g = 0$. The graph illustrates that the peak acceleration a_m is larger for a larger value of C_c , i.e., larger C_L^* , and that $a_m \rightarrow 0$ for $C_c \rightarrow 0$. The value of a_m increases if larger values of X or lower values of C_g are applied. Note that in all cases shown in Fig. 7a the eruption starts at the same height, very close to $H = 1$. This is consistent with conclusions drawn by (e.g., Chen 1989; Vršnak 1990) and confirmed by observations (e.g., Vršnak et al. 1991; Chen and Krall 2003). This property is a consequence of the hoop-force behaviour, achieving a maximum at $H = 1$, since at this height the radius of curvature attains minimum, $\tilde{R}_t = 1$.

For comparison, besides the four $a(H)$ curves based on the Kuperus–Raadu configuration ($C_c > 0$) shown in Fig. 7a, one example of the Kippenhahn–Schlüter case is presented (gray-dotted curve; $C_c = -700 \text{ ms}^{-2}$). It reveals a completely different behaviour than the Kuperus–Raadu configuration. First, the equilibrium point is shifted to much lower heights

than in the Kuperus–Raadu case. Furthermore, the metastable form of the $a(H)$ curve is possible only for $C_g > 0$, and in that case there is always an upper-equilibrium position present (the x-axis intercept of the $a(H)$ curve located at $H \approx 1$ in the presented case). Thus, the Kippenhahn–Schlüter configuration can result only in failed eruptions, and will not be considered hereafter.

To illustrate the effect of gravity, Fig. 7b shows four loss-of-equilibrium $a(H)$ curves for different values of C_g and the corresponding values of C_L^* , applying fixed values $d = 70$ Mm, $X = 5$, and $C_c = 1.3 \text{ km s}^{-2}$. The three curves calculated with $C_g \neq 0$ show an upper equilibrium point, unlike the curve calculated with $C_g = 0$. Thus, in $C_g \neq 0$ cases, the eruption should stop at an upper equilibrium. As a matter of fact, after loosing equilibrium, the rope should accelerate upwards, reach maximum speed at the upper equilibrium, after which it should be decelerated until being stopped. Then, the restoring force at the upper equilibrium would start accelerating it downwards—in the absence of drag the rope should oscillate around the upper equilibrium position. Taking into account the drag effect, the oscillations would be damped until the rope settles at the upper equilibrium (for observations see, e.g., Vršnak et al. 1990; Mrozek 2008).

In Fig. 7b we also show the case $C_g = 0.3 \text{ m s}^{-2}$ with $C_L^* = 144 \text{ m s}^{-2}$ (red-dotted curve), to compare it with the curve calculated for the same $C_L^* = 144 \text{ m s}^{-2}$ and $C_g = 0$ (red-full curve). The graph shows that the gravity effect shifts the $a(H)$ curve downwards, and since the effect is weaker at larger heights due to decreasing g , this leads to the formation of the upper equilibrium position. In this respect, let us also note that the gravity effect weakens with increasing d , i.e., it is smaller for larger ropes. For example, for d two times larger than the applied value of $d = 70$ Mm, the upper equilibrium disappears in the $C_g = 0.3 \text{ m s}^{-2}$ case.

The effect of the decreasing background magnetic field is illustrated in Fig. 7c, where we show $a(H)$ curves calculated using again $C_L^* = 144 \text{ m s}^{-2}$, $C_c = 1.3 \text{ km s}^{-2}$, $X = 5$, and $C_g = 0$, but now applying several different values of the exponent n in the dependence $B_c = B_{0c} \tilde{R}_t^{-n}$. The red curve, representing the case $n = 0$, is the same as the red curves in Figs. 7a and 7b. The graph shows that the peak acceleration increases with increasing n , i.e., it is larger for eruptions occurring in coronal regions where the decrease of the magnetic field is steeper. The rate of decrease is dependent on the flux distribution at the photosphere. Furthermore, the acceleration peak systematically shifts to lower heights.

Although the effects presented here are similar to those governing the torus instability, they do not describe the same physical mechanism. If one would like to consider the torus-instability effect, the pressure-gradient term in the hoop force, i.e., the first term in (1), should be replaced by a new term, estimated using a new difference between the magnetic field strength at the inner and outer boundary of the torus. The difference can be estimated from the derivative of $B_c = B_{0c} \tilde{R}_t^{-n}$, and from that one gets the pressure-gradient term of the form $2nC_L/\Lambda \tilde{R}_t^{n+1}$. Note that this approach is different from that usually applied (e.g., Kliem and Török 2006), where the equation of motion is derived employing the virtual-work principle. Consequently, the equation of motion is of a somewhat different form than that used in torus instability studies. For example, the “standard” torus instability equation of motion includes explicitly the self-inductance, whereas it is herein included implicitly. In addition, (1) includes the diamagnetic effect, Ampère force, and gravity, which are not usually considered in torus instability studies.

The torus instability effect is illustrated in Fig. 7d, where $a(H)$ curves for several values of n are presented. Comparing this graph with the graphs presented in Fig. 7a–c, one finds a considerably different behaviour of the flux rope. First, the loss-of-equilibrium height H^* is increasing with decreasing n , and at the same time, the peak acceleration a_m decreases.

Second, in the case of $n > 1$ the $a(H)$ profile is more sharply peaked than profiles shown in Fig. 7a–c, and the peak accelerations are higher. Thus, eruptions driven by the torus instability should be more impulsive than those driven by the hoop force that represents a form of the kink instability. Finally, note that an eruption is not possible if the value of n is too low, due to the trend $a_m \rightarrow 0$ and $H^* \rightarrow \infty$ for decreasing n . For example, for the set of parameters used for Fig. 7d, the critical value of n is ≈ 0.8 .

The analysis presented here shows that under the conditions considered it is difficult to get accelerations higher than 1000 m s^{-2} . For example, even taking C_L as high as 1000 m s^{-2} in the hoop-force option (at the same time requiring extremely large $C_c = 100 \text{ km s}^{-2}$), one gets a peak acceleration up to 600 m s^{-2} . This limitation is related to the conservation of magnetic flux associated with the electric current in the eruptive structure, in conjunction with the inductivity effects. As previously demonstrated, these effects cause a decrease of the current as the size of an eruption increases, which in turn leads to a rapid decrease of the driving Lorentz force. Thus, in order to get a really high acceleration, the flux-conservation constraint has to be broken. This can be attributed either to an abundant flux emergence, as proposed by Chen (1989), or by eruption-related reconnection resulting in the flare energy release, as suggested by Vršnak (2008). Since in the former case the emergence rate should be much higher than ever observed, the latter option seems to be more appropriate (Kunkel and Chen 2010). It is also important to note that since the open field configuration holds more energy than the closed state, it has been postulated that magnetic reconnection is necessary for a successful eruption to occur (Aly 1984; Sturrock 1991).

The role of reconnection in the dynamics of a flux rope eruption was analysed by Vršnak (2008) and Vršnak (2016), providing an insight into the physics of the CME/flare relationship. Reconnection results in two effects that can significantly enhance and prolong the CME acceleration. First, reconnection supplies the rope with additional poloidal flux (see Fig. 4 in Vršnak 2008), which enhances the hoop force, providing higher peak accelerations. Furthermore, the poloidal-flux supply reduces the inductive decrease of the axial current in the later phases of the eruption, i.e., the acceleration phase is prolonged. The second important effect of reconnection is the weakening of the magnetic tension of the arcade field overlying the flux rope by detaching this field from the photosphere.

In Vršnak (2008) and Vršnak (2016) the reconnection effects were analysed assuming that reconnection starts simultaneously with the force imbalance, attains maximum rate when the rope is at a certain height, and ends at twice this height. Various combinations of the height range and peak reconnection rate were considered to find out how these parameters affect the eruption kinematics (see Fig. 2 in Vršnak 2016). It was demonstrated that the acceleration time profile is tightly synchronized with the reconnection-rate time profile, whereas the velocity time profile is synchronized with the cumulative reconnected flux. This explains the observed synchronization of the CME acceleration phase and the impulsive phase of the associated flare (Kahler et al. 1988; Neupert et al. 2001; Zhang et al. 2001, 2004; Shanmugaraju et al. 2003; Vršnak et al. 2004b; Zhang and Dere 2006; Maričić et al. 2007; Temmer et al. 2008, 2010). It was also shown that the peak acceleration is higher for higher peak reconnection rate. Consequently the maximum speed of the eruption is higher for larger total reconnected flux, consistent with observations (Qiu and Yurchyshyn 2005). It was also demonstrated that the highest observed accelerations, reaching $\approx 10 \text{ km s}^{-2}$, could be achieved if the total reconnected flux is a few times larger than the initial poloidal flux of the rope, corresponding to $\approx 10^{22} \text{ Mx}$. Such amounts are frequently observed in flares (e.g., Qiu et al. 2004, 2007; Qiu and Yurchyshyn 2005; Miklenic et al. 2007, 2009).

The sequence of events presented here can be brought together in a relatively simple eruption scenario. If the coronal structure contains a flux rope and this rope is characterized

by weak electric current and/or low degree of twist (i.e., low values of C_L and X , respectively), it is stable. If the rope is displaced from the equilibrium position, it will oscillate around the equilibrium position. If C_L or X (or both) start to increase due to photospheric twisting, shearing, or flux emergence, the structure gradually evolves through a series of quasi-equilibrium states. The equilibrium height in the $a(H)$ curve increases, which is reflected in a slow rise of the structure. At a given amount of twist, the structure becomes metastable, and if pushed strongly enough to reach the point of unstable equilibrium, it will erupt.

If the structure is sufficiently sheared or twisted, the gradual rise of the structure caused by increasing C_L and X ends up with a loss of equilibrium, and consequently, an eruption. The threshold value of X (the ratio of poloidal to axial field) is lower for structures characterized by larger C_L . It is important to note that observations of the flux swept out by flare ribbons, compared to in situ flux measurements of the associated magnetic cloud, indicate that the pre-eruption structure is weakly twisted, consistent with EUV and soft X-ray observations. The poloidal flux is added via the flare reconnection (Qiu et al. 2007; Hu et al. 2014). Under certain circumstances, when the $a(H)$ curve shows the presence of an upper equilibrium, the eruption might be halted, showing damped oscillations around the upper equilibrium position. Otherwise, the eruption continues into the heliosphere. The acceleration is stronger, and speed higher, for larger values of C_L and X . Since C_L is related to the current ($C_L \propto I^2$) and X with the self-inductance ($L \propto X$), this is equivalent to saying that the acceleration and speed are higher for structures containing larger amount of free energy $W = LI^2$. Furthermore, since C_L can be also expressed as $C_L \propto B^2/\rho$, we find that acceleration and speed are higher for structures characterized by a higher Alfvén speed. This is consistent with the order-of-magnitude relationships anticipated at the beginning of this section.

To conclude this sub-section, the analysis presented demonstrates that events characterized by $a_{\max} > 1 \text{ km s}^{-2}$ can occur only if the eruption is accompanied by strong magnetic reconnection below the erupting rope. Indeed, the most powerful/impulsive eruptions are associated with powerful/impulsive flares, supporting such a conclusion. Note that the reconnection process can go on for a long time, on the order of a day, as evidenced by growing post-eruption loop systems (e.g., Veronig et al. 2006; Vršnak et al. 2006, and references therein) and signatures of current sheets in the wake of the CME (e.g., Ko et al. 2003; Webb et al. 2003; Lin et al. 2005; Ciaravella and Raymond 2008; Vršnak et al. 2009). Finally, the acceleration can be additionally enhanced by a transport of twist into the expanded summit of the rope (Jockers 1978; Browning and Priest 1983) and by writhing of the flux-rope axis that decreases the radius of curvature (e.g., Török et al. 2010).

2.2.4 Sympathetic Eruptions

The previous discussions in this section focussed on single, isolated eruptions. However, solar eruptions can occur relatively close to each other in both space and time, and may thus interact low in the corona or later on in interplanetary space. Such interactions are discussed in Manchester et al. in this Volume; see also the recent review by Lugaz et al. (2016). Here we focus on a special type of interaction, namely those in which one eruption appears to initiate another one. Such events were first mentioned more than 80 years ago (Richardson 1936), and are now commonly referred to as *sympathetic* eruptions.

Sympathetic eruptions occur within a relatively short period of time (tens of minutes to several hours) at different locations on the Sun. The individual eruptions may originate in one, typically large and complex source region (e.g., Liu et al. 2009) or in different source

regions that are often, but not always, adjacent.³ Research on sympathetic eruptions revolves around two main questions. Is the close timing of individual eruptions purely coincidental, or does some causal link exist between them? And if it does, what is the physical nature of such a link?

Prior to the launch of SDO, research on the timing of flare/CME events focused mainly on the flares (Fritzova-Svestkova et al. 1976; Pearce and Harrison 1990; Bumba and Klvana 1993; Bagalá et al. 2000; Biesecker and Thompson 2000; Wang et al. 2001; Moon et al. 2002; Wheatland and Craig 2006). Many of these studies considered waiting-times (i.e., the time interval between two successive events) and the location of the event, both of which are easier to establish for flares than for CMEs (Moon et al. 2003). These predominantly statistical studies have provided strong evidence that a causal relationship between sympathetic eruptions does indeed exist. This was supported by detailed case studies (e.g., Bumba and Klvana 1993; Wang et al. 2001). Sympathetic CMEs were studied less frequently though (e.g., Simnett and Hudson 1997; Moon et al. 2003; Cheng et al. 2005; Jiang et al. 2008), and the evidence for their existence appeared to be weaker than for flares (Moon et al. 2003). However, since flares and CMEs are often merely different observational manifestations of the same eruption process, this discrimination is somewhat artificial. The physical connections between sympathetic eruptions were attributed to, e.g., large-scale convective motions that led to simultaneous flux emergence in the flaring regions (Bumba and Klvana 1993) or waves triggered by a previous eruption (e.g., Ramsey and Smith 1966, Khan and Hudson 2000; see also Mullan 1976 for sympathetic stellar flares). Later it was suggested that these connections are of a magnetic nature, such as surges or jets produced by an adjacent eruption (Wang et al. 2001; Jiang et al. 2008) or changes in the background field due to expansion or reconnection (e.g., DeVore and Antiochos 2005; Zuccarello et al. 2009; Jiang et al. 2011; Yang et al. 2012).

The launch of SDO spurred a new series of investigations. This was triggered by the complex sympathetic eruptions that took place on 1–2 August 2010 and that were observed in unprecedented detail by AIA. Schrijver and Title (2011) analyzed the coronal magnetic field during the time period of the eruptions (using potential field extrapolations), and found evidence for connections between all source regions involved via structural features such as separators and quasi-separatrix layers (QSLs; Priest and Forbes 1992; Démoulin et al. 1996). They concluded that the structural properties of the large-scale coronal field play an important role in the genesis of sympathetic eruptions (see also Schrijver et al. 2013). Other cases of sympathetic eruptions observed by AIA can be found in Shen et al. (2012, 2013), Joshi et al. (2016), and Wang et al. (2016).

The 1–2 August 2010 events also inspired new modelling efforts (for earlier attempts see, e.g., Ding et al. 2006; Peng and Hu 2007). Figure 8 shows an MHD simulation by Török et al. (2011), which was designed to qualitatively reproduce a sub-set of these events (see also Lynch and Edmondson 2013). The simulation suggests two purely magnetic mechanisms for the links between successive eruptions. Figure 8 panel (a) shows the initial configuration, consisting of two flux ropes (F2, F3) located in the lobes of a pseudostreamer and one rope (F1) next to it. Pseudostreamers or pseudostreamer-like configurations appear to be prone to producing sympathetic eruptions; they often harbor twin-filaments that erupt successively (Panasenco and Velli 2010), which was the case also in the 1–2 August 2010 events. In the simulation, the eruption of F1 triggers the formation of a thin current

³Successive eruptions that start from essentially the same location and display very similar morphological properties are typically referred to as *homologous* eruptions, which we do not consider here (for details on such events see, e.g., Duchlev et al. 2016; Lugaz et al. 2016, and references therein).

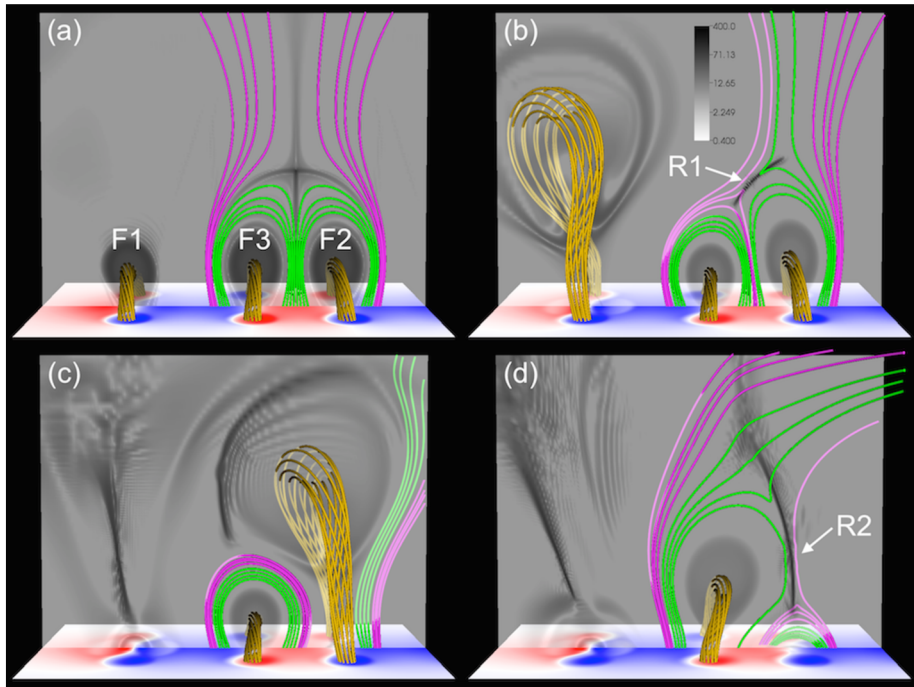


Fig. 8 MHD simulation of sympathetic flux-rope eruptions by Török et al. (2011). The eruption of F1 triggers the subsequent eruptions of F2 and F3 due to the reconnection events R1 and R2, respectively

layer around the separator line above the pseudostreamer lobes, across this current sheet breakout-like reconnection (R1) transfers flux from the right lobe to the left one (panel (b)). This reduction of flux, and thus of stabilizing magnetic tension, triggers the torus instability in F2, which subsequently erupts (panel (c)). Finally, the flare-reconnection (R2) below F2 redistributes flux from the left lobe to the growing flare arcade (panel (d)). This new flux reduction now destabilizes F3, completing the sequence of eruptions. Note that these two similar mechanisms can work independently, and their applicability is not restricted to pseudostreamers. They can work also in a quadrupolar configuration, as hypothesized by DeVore and Antiochos (2005). What is required for their occurrence is merely a flux system that contains adjacent lobes overlaid by a separator line and a sufficiently strong perturbation to set things in motion. An important and yet largely unexplored question is under which conditions such reconnections will be actually strong enough to trigger a subsequent eruption (see Török et al. 2011). Very recently, Jin et al. (2016) undertook the first steps in answering this question, by investigating and quantifying the effects CMEs can have on adjacent and remote magnetic fields.

The simulation shown in Fig. 8 constituted a significant step forward in understanding the physical links between sympathetic eruptions. However, it was designed as a “proof of concept” model, using a simplified magnetic configuration. Employing instead a potential field source surface (PFSS) model based on observed magnetograms, Titov et al. (2012) performed a detailed topological analysis of the coronal magnetic field during the time of the 1–2 August 2010 events, and found support for the occurrence of the mechanisms suggested in Török et al. (2011). In order to further substantiate this scenario, MHD simulations with

more realistic magnetic fields need to be employed to test whether sympathetic eruptions can occur also under less idealized and symmetric conditions (Mikic et al. 2011). Such simulations will allow us also to investigate the long-range effects of eruptions (e.g., Schrijver and Higgins 2015), as recently demonstrated by Jin et al. (2016). Furthermore, whether other mechanisms, such as waves, can serve as a possible link between eruptions can be tested too. At present, the observational and numerical studies that have been performed since the launch of SDO strongly support the conjecture that the mechanisms at work in sympathetic eruptions are magnetic in nature. These mechanisms, by means of reconnection, act predominantly by reducing the magnetic tension in the source region of an eruption, allowing the core field of the region to erupt.

3 Predictability of Solar Eruptions

Significant progress has been made in understanding the physics that underlies CME occurrence, as well as the observational characteristics of eruptions. So, where do we stand in our ability to predict CMEs for use in space weather forecasting? There are two basic goals and approaches: (1) to predict the *occurrence* and timing of an eruption (before it has happened) and (2) to predict the erupting magnetic field configuration that leaves the Sun, and its arrival time at Earth which is related to the *impact* of an eruption. In this section, we summarise the current status of our ability to predict the occurrence of a CME based on observations (Sect. 3.1) and based on MHD modelling (Sect. 3.2).

3.1 Predictions Based on Observations

The evolution of the coronal and chromospheric plasma structures in CME source regions can sometimes provide an indication of an impending eruption, as summarised in Green and Baker (2015). However, the timescales over which observations reveal that a CME might be imminent can vary. For example, filaments darken, broaden and slowly rise in the minutes prior to their eruption (for a review see Martin 1980) whereas streamers brighten over around a day before they lift off as a CME (Illing and Hundhausen 1986). Ultimately, a variety of observations may need to be utilised to both identify that a magnetic structure is evolving toward an eruptive configuration, and give a warning of when the eruption is imminent. Here we summarise the large body of observational work that is relevant to CME prediction.

The observational approach to predicting CMEs broadly involves two aspects; identifying the existence of a potentially eruptive magnetic field configuration and identifying the path to its destabilisation. Perhaps the longest-known eruptive magnetic field configuration is that which supports a filament. Feynman and Martin (1995) investigated the role that flux emergence may play in the destabilisation of filaments and found that 19/30 of the eruptions studied were observed to have new flux emergence in the vicinity of the filament. The flux emerged in a time period of a few days before the CME. Filaments that did not have nearby flux emergence did not erupt. The study showed that the orientation of the newly emerging flux was important, with bipoles that were orientated in such a way as to be favourable for reconnection being key for CME occurrence.

Sigmoids are another coronal configuration that is associated with eruptive activity. Sigmoids are S-shaped coronal emission structures seen in soft X-ray and EUV observations (see Sect. 2.1.1), which form in a sub-set of CME source regions. These configurations are one of the most successful indicators of an eruption (Canfield et al. 1999) and have become synonymous with CME occurrence. Given the observation that sigmoidal active regions are

highly likely to produce a CME, the question can be asked “how much time elapses between the sigmoid formation and the CME?”. Green and Kliem (2014) found that around 5 to 14 hours elapsed between formation and eruption in the small sample of sigmoid regions studied. This study used the time of the first observation of a continuous S-shaped emission structure (rather than an overall S shape formed in a collection of loops) to indicate that a sigmoid had formed. Canfield et al. (2007) found 107 active regions with overall sigmoidal shape in a study of all the active regions imaged in partial-frame SXT data. This means that around 6% of active regions observed in the partial frame *Yohkoh*/SXT data during 1991 to 2001 were sigmoidal. Although Sterling (2000) has a slightly more optimistic finding, stating that “These observations indicate that the pre-eruption sigmoid patterns are more prominent in SXR than in EUV, and that sigmoid precursors are present in over 50% of CMEs.” So, whilst sigmoids are a useful proxy, not all active regions evolve to produce a sigmoidal configuration. In addition, sigmoids are more likely to be seen in active regions when they are near disk centre and viewed from above, when projection effects do not mask the S shape. As discussed in Sects. 2.1.1 and 2.1.2, a sigmoidal emission structure can indicate the presence of a flux rope magnetic field configuration.

The observation of a continuous sigmoid therefore gives a only few hours warning that the region will produce a CME. Sigmoids can form in decaying bipolar active regions though, that appear to show a systematic evolution toward this shape during their lifetime and this can be exploited to give a longer lead time for CME prediction. For sigmoids that form in decaying bipolar active regions, the process of formation takes a couple of days. During this time the coronal structures evolve due to flux cancellation in the photosphere. Flux cancellation can take the coronal field through three observational stages; 1) increase of shear along the polarity inversion line, 2) the formation of two sets of J-shaped loops and 3) the formation of a sigmoid (Green and Kliem 2009, 2014). Accurately identifying stage 2 would increase the CME forecast time by up to a day. Sigmoids are relatively easy to identify when present in small and bipolar regions and viewed from above. They could be harder to identify in complex multipolar active regions with several polarity inversion lines and strong EUV and soft X-ray emission from adjacent structures. However, it is still possible to observe sigmoids in these environments (e.g. Zharkov et al. 2011) where they also seem to be associated with flux cancellation.

The interpretation that some sigmoids indicate a flux rope topology has led to studies of flux cancellation that probe the amount of flux that builds into the rope. This can potentially be used to investigate the stability of the structure. The flux cancellation associated with the formation of a sigmoid was studied in detail for the small bipolar NOAA active region 10977 (Green et al. 2011). The amount of flux cancelled was measured from the time that the active region had fully emerged to the time of the first eruption from the region. The results showed that at the time of the eruption the ratio of flux in the rope to that in the overlying field of the active region had an upper value of 1:1.5. Another study, in an active region that wasn't sigmoidal found that at the time of a filament eruption the ratio of the flux contained in the rope to the flux of the overlying arcade field was 1:0.9 (Yardley et al. 2016). However, there were previous eruptions from this region and the study wasn't able to track the flux cancellation during the entire time during which the filament was forming, and so may represent a lower limit to the flux that was actually contained in the rope. These observational results can be compared to a series of studies that use the flux rope insertion method (van Ballegooijen 2004) to investigate the stability of flux ropes embedded in an overlying arcade. Stable flux ropes have been produced that have a ratio of flux in the rope to flux in the overlying arcade ranging from 1.15 to 1.9 (2008; Savcheva and van Ballegooijen 2009; Su et al. 2009; Savcheva 2012). The Savcheva (2012) study compared the modelled

results to the observational deductions of flux rope flux, which found that around 60% to 100% of the flux involved in the flux cancellation built into the rope.

Flux cancellation at the photosphere may be an indicator of the formation of an eruptive configuration but cancellation is a ubiquitous process that takes place all over the photosphere. The challenge is to recognise when and where this process is important for CME occurrence, which can only be done when studied in concert with the evolution of the coronal field. Another aspect is that a small number of sigmoids appear more transiently in active regions. These sigmoids appear to be formed via reconnection in the corona (rather than via flux cancellation and reconnection in the photosphere or chromosphere). Sigmoids formed in this way have been observed around 2 hours prior to their eruption (Cheng et al. 2014; James et al. 2017) although they tend to flash into view and fade, only to reappear again around eruption onset making them harder to use for CME forecasting.

An alternative and complementary approach is to study the occurrence and predictability of solar flares in order to make a CME forecast. This approach is relevant due to the relationship between flares and CMEs (see Sect. 2.1.3) and has the added advantage that the datasets used to study flares include observations of the photosphere, which are available over a much longer time period than X-ray and EUV imaging, and coronagraph observations are. Sammis et al. (2000) analysed eight years of active region observations in order to establish whether a relation between an active region's magnetic classification and the occurrence of large flares (for a description of the active region classes see Hale et al. 1919). They find that active regions classified as $\beta\gamma\delta$ produce significantly more large flares than other regions of comparable size. Each active region of magnetic class $\beta\gamma\delta$ and a size greater than 1000 μh revealed a probability of nearly 40% of producing flares of GOES class X1 or greater. Flares of this size have around a 90% chance of being associated to a CME (Yashiro et al. 2005). More recently, surface magnetic parameters were combined with the amount of stored (free) magnetic energy reconstructed from local non-linear force-free field modelling, and tested against the flare productivity of active regions (Jing et al. 2010). Though this study revealed that the free magnetic energy clearly differentiates flaring active regions from non-flaring active regions, the temporal variation of an region's free magnetic energy did not exhibit a clear pre-flare pattern.

Studies that apply the physical knowledge of an active region's morphology and magnetic properties, to parameterize the solar data in order to quantify flare/CME productivity, mostly use the photospheric line-of-sight magnetic field. However, vector field measurements can also be used. For the parameterizations based on the magnetic properties of active regions, one can further distinguish between those that relate directly to the observed photospheric field (such as magnetic flux, length and strength of main polarity inversion line, etc.) and those that are derived after reconstruction of the coronal field distribution from the vector photospheric data (such as total magnetic energy, free magnetic energy, etc.), see Barnes et al. (2016). In general, it seems that quantities that are integrated over active region scales are stronger determinants for upcoming flare/CME activity than are localized variations on small scales (e.g. review by Schrijver 2009). In addition, the flaring history of an active region plays a decisive role (Falconer et al. 2012). There exist statistical methods that predict flaring probabilities using solely the flaring history of the active region under study. This type of statistical model makes use of the information that the past history of flare occurrence in an active region is an important indicator of its future flare productivity and that the solar flare size distribution follows a power-law (Wheatland 2004).

One of the key features used to describe the magnetic characteristics of an active region with respect to its flare/CME productivity is the polarity-inversion line. Schrijver (2007) conducted a statistical study of the magnetic properties of active regions associated with almost 300 M- and X-class flares, in comparison with 2,500 randomly selected active regions.

The main finding of the study was that active regions that are the source of large flares all have a pronounced polarity inversion line with a strong gradient across it. Calculating the unsigned flux within 15 Mm of such strong field polarity inversion lines is shown to be a good indicator for the occurrence of a large flare.

A series of papers led by Falconer used the polarity inversion line along with a photospheric proxy for the free magnetic energy stored in the coronal magnetic field to investigate whether there exists a relation to the region's CME productivity. The work used vector magnetic field data to derive various parameters that describe the global non-potentiality of the active region's magnetic field. These parameters are the length of the strongly sheared field across the polarity inversion line, the net electric current and the degree of twist. They showed that all three parameters are significantly correlated with the active region's CME productivity (Falconer et al. 2002). Note that in their study, they focussed on active regions with one well-defined, dominant polarity-inversion line. In a follow up study, Falconer et al. (2006) extended this work to a larger sample of active regions, and also extended the set of parameters derived from the vector field data. Three of the six parameters calculated characterize the total non-potentiality of the active region (length of the strong-shear segment of polarity inversion line, length of the main polarity inversion line with a strong field-gradient across it, and the total net electric current). Two of them describe the overall twist in the active region (the net-current α and best constant α derived from a linear force-free field) using the twist parameter α , which is determined from the net current divided by the magnetic flux. One parameter describes the active region size (the total magnetic flux). They find that the magnetic twist and the size are not correlated, i.e. they are separate quantities describing the active region's characteristics, but both show a strong relation to the active region's CME productivity, suggesting that a combination of total flux and total twist would provide the best metric for forecasting. In addition, they find that the total free magnetic energy in an active region is more relevant to its CME productivity than is the overall twist (or its large-scale helicity) alone.

Georgoulis and Rust (2007) carried out a study where only a single metric was used to provide a probability forecast of flaring occurrence in an active region. The authors defined a quantity called the "effective connected magnetic field", B_{eff} , that is calculated by connectivity matrices of field-line lengths and fluxes between positive and negative flux elements. They derived B_{eff} for 298 active regions (93 X- and M-flaring, 205 non-flaring) from MDI/SOHO data over a 10 yr period during solar cycle 23, finding that B_{eff} provides a robust measure to distinguish flaring from non-flaring regions.

Leka and Barnes (2003a,b) conducted a thorough study into whether an active region will be flare-productive or flare-quiet. They derived various parameters, together with their statistical moments from vector magnetic field data. These parameters include the magnetic flux distribution, horizontal spatial gradients of the field, vertical current, twist parameter α , current helicity, shear angles, and photospheric excess magnetic energy. Leka and Barnes (2007) examined a set of 496 active regions observed in more than 1200 magnetograms. Statistical tests based on linear discriminant analysis are applied to the numerous photospheric magnetic parameters listed above, and compared to epochs of non-flaring. The most accurate predictor for the occurrence of large flares (defined as larger than M1), is found to be the total excess photospheric magnetic energy (in excess of the potential field). Other top performers identified are parameters that measure global properties of the field, i.e. ones that are integrated over the full active region. The analysis of Leka and Barnes (2007) shows that a number of parameters are important to quantify an active region as flare-productive, but many of these quantities are strongly correlated. For instance, large active regions as measured by the total magnetic flux also tend to have large vertical currents, significant excess

energy, and significant current helicity. Thus, the choice of which few variables to use is not unique. The discriminant analysis in Leka and Barnes (2007) gives a success rate of 80% for the occurrence of flares of GOES class C1 or larger. This is compared to a success rate of 70% when all regions are uniformly classified as “flare quiet”. For flares of class M1 and larger, the success rate obtained is 93%, which is only slightly larger than the rate of 91% that is obtained for the uniform flare-quiet labelling. This is an intrinsic problem related to the low occurrence rate of large flares, as low event occurrences typically lead to large false alarm rates. Based on these outcomes, the authors conclude that the state of the photospheric magnetic field at any given time does not have a large influence on whether an active region will be flare productive or not. This is in line with the conclusion in Schrijver (2009), that so far none of these various measures (either single or combined) has been identified as being particularly well correlated with the flare/CME activity of an active region.

In order to directly compare the relative success of existing flare prediction algorithms, an interagency “All-Clear workshop” was held in Colorado in 2009. The outcomes of the workshop are summarised in Barnes et al. (2016). The workshop brought together people working on a number of existing algorithms. Previously, it had been difficult to compare the outcome of different flare forecasting algorithms, as they use different analysis techniques and data sets. The analysis carried out for the All-Clear workshop was based on a common data set, using line-of-sight magnetic field and continuum intensity maps from MDI/SOHO, and applied standard verification metrics to evaluate the performance of the different methods. In total, 11 different algorithms were applied including the ones that are described above, i.e. the methods of Georgoulis and Rust (2007), Falconer et al. (2002, 2008), Leka and Barnes (2003a,b, 2007), Schrijver (2007) and Wheatland (2004). In addition, a number of further algorithms were included, which are now described. The method of Colak and Qahwaji (2008, 2009) is based on a feature-recognition technique to automatically derive the McIntosh classification from white-light images and subsequently uses machine learning to make a probability forecast based on the sunspot class. The method by Bloomfield et al. (2012) uses historical flaring rates related to the McIntosh class of the source active region to make forecasts using Poisson probabilities. Yuan et al. (2010, 2011) apply machine learning techniques to provide flare forecasts from characteristic magnetic parameters, such as the total unsigned magnetic flux, length of the strong-gradient polarity inversion line, and total magnetic energy dissipation. The method by McAteer et al. (2010) is based on the fractal dimension of the magnetic flux concentrations in an active region to determine its flare productivity. The algorithm by Higgins et al. (2011) and Qahwaji et al. (2008) uses automatic characterization of various magnetic parameters of the active region to apply flare forecasts based on cascade correlation network techniques. The main outcome of the comprehensive workshop study detailed in Barnes et al. (2016) is that no method was clearly outperforming the others. This may be due to the fact that there are strong correlations between the different parameters that are used in the different prediction schemes. For the prediction of flares of class M and larger, the set of methods studied tends to give a slightly positive skill score, but none of the methods achieved large skill score values. All skill scores were $\lesssim 0.2$. For context, a perfect forecast would have a skill score of 1 and forecasts that have positive skill score values indicate that the method is more successful than the reference method being used.

An interesting case study against which to examine and test ideas around predicting flares/CMEs based on observations is NOAA active region 12192. This region appeared on the solar disk in October 2014 and it hosted the largest sunspot seen by that point in solar cycle 24. From its size and complexity ($\beta\gamma\delta$) it was expected to be the source of a significant amount of free magnetic energy and high-intensity flares, therefore catching the attention of

space weather forecasters. Indeed the region produced six GOES X-class flares during its disk passage but no successful eruptions occurred (Thalmann et al. 2015; Sun et al. 2015). Although the magnetic field of NOAA region 12192 was complex there was a separation of the main positive and negative magnetic polarities with time. No convergence or collision of polarities was seen during its first disk passage. Small bipoles between the main spots (called “serpentine field”) were observed indicating that the flux emergence process was still taking place. Overall, the active region configuration was that of one main bipole, with at least 2 new bipolar emergences on the periphery of the sunspot region or near the centre, later in time. The region was studied by Sun et al. (2015) who compared NOAA active region 12192 to two other flare-productive regions (11429 and 11158). They constructed NLFFF extrapolations and calculated the free energy in the coronal field, the decay index of the coronal field and the squashing factor. They find that the region’s core field had a low level of non-potentiality and that the overlying field was relatively strong. The lack of colliding polarities (and therefore opportunities for magnetic reconnection) may be the reason that a strongly non-potential field didn’t build up along any polarity inversion line in the active region and the lack of flux cancellation would have resulted in no tether cutting (which removes overlying restraining field).

The suggestion that CMEs may act as a valve for magnetic helicity that has accumulated in the corona appears to lead intuitively to the idea that CMEs might occur once a threshold in this quantity has been reached. Can this be used to forecast the occurrence of a CME? Although this idea is by no means accepted or proven, some work has indicated that magnetic helicity is a necessary but not sufficient condition for an eruption (Amari et al. 2003b) whilst others show that magnetic helicity is not necessary for CMEs (Zuccarello et al. 2009). It is worth noting that CMEs originate from a wide range of coronal magnetic structures, from bright points with a flux (ϕ) of around 10^{20} Mx, to large active regions, where $\phi = 10^{22}$ Mx, giving a potentially large range in magnetic helicity values (since helicity scales with ϕ^2). Therefore, there will not be a one-size-fits-all value for magnetic helicity in order to create an eruptive configuration. Instead, the helicity of an eruptive configuration will vary from case-to-case. A study by Pariat et al. (2017) takes a different approach into the potential utility of magnetic helicity to forecast and eruption. Pariat et al. (2017) study the evolution of stable and eruptive magnetic configurations using the flux emergence simulations of Leake et al. (2013, 2014). The relative magnetic helicity of the computed field is decomposed into that of the current carrying component and that of the potential component. They find that the eruptive configurations are not necessarily those with the highest magnetic helicity value but that an eruptivity indicator exists in the ratio of these two components of the relative magnetic helicity. Opening, for the first time, an avenue for investigating how magnetic helicity may be used for CME forecasting.

3.2 Predictions Based on MHD Models

MHD models provide a potentially powerful future tool in the quest for a predictive capability of CMEs. However, at present, the MHD numerical models described in Sect. 2.2 cannot be used for predicting the time of an eruption. This is in part because most of these models do not provide quantitative onset criteria that could then be applied to observations or magnetic-field extrapolations of potential CME source regions. Even those that do (i.e. the kink and torus instability models) can at present only provide rough estimates of the onset criteria. This is because the exact thresholds of these instabilities depends on the detailed structure of the magnetic-field configuration, which is not sufficiently well known. Moreover, exact thresholds have so far only been derived for rather idealized model configurations rather

than those exhibited by the real Sun. A complementary approach is to create a simulation that is driven by line-of-sight magnetograms. Using real data provides an opportunity to create a realistic simulation so that the coronal field can be monitored for its eruptive potential. This is the approach used by Gibb et al. (2014) in a study of NOAA active region 10977 that employs a magnetofrictional method driven by line-of-sight magnetograms. The study found that a *realistic* magnetic field line reconstruction was not possible around the time that the active region erupted suggesting that the approach captured well the destabilisation of the coronal field. Since the top boundary of the simulation box is closed, the flux rope that had formed and started to erupt wasn't able to escape the computational volume. That is, the computed field was trying to relax by ejecting the flux rope but the boundary conditions did not allow this to happen. Consequently, this led to the formation of highly twisted structures in the computational volume.

Apart from the eruption onset, one would also like to forecast the *arrival time* and *impact* at the Earth of the CME, once the eruption is on its way. CMEs typically take from 0.7 to 4 days to travel from the Sun to the Earth. This is an amount of time that allows an MHD model, based on solar data, to be run. In contrast, predicting the effects of energetic-particle events created by CME-induced shocks is much more challenging, as these particles can reach the Earth in less than an hour. We therefore consider here only to what extent MHD models can be employed for predicting the time and impact of space-weather disturbances caused by CMEs. The most important quantities for the latter are the speed, duration, plasma density, and magnetic field strength and orientation of the CME. Sophisticated models should also include the effects of the shock and the sheath that precede the CME flux-rope in fast events.

As discussed in Jin et al. (2017), present CME forecasting models can be divided into different categories (see also Siscoe and Schwenn 2006; Messerotti et al. 2009). The first categories contain empirical forecasting models (e.g., Gopalswamy et al. 2001; Schwenn et al. 2005), kinematic models such as the cone model (e.g., Zhao et al. 2002) and analytical models such as the drag-model (Vršnak et al. 2013). These models have been widely used to predict the arrival time, orientation, and speed of CMEs (and of associated shocks), but they cannot provide predictions of the plasma density and the magnetic field (though see, for example, Möstl et al. 2014 for attempts to predict the maximum magnetic field strength in an CME from its predicted speed). To this end, the use of models of the third category, namely of MHD simulations, appears inevitable.

However, MHD simulations that employ observed data and continuously model an eruption from its onset in the low corona out to 1 AU (see Manchester et al. in this issue) are limited to using data from the Earth's point-of-view. Therefore, the Earth-directed component of the CME velocity is not accurately determined. Moreover, these simulations cannot yet be performed in a constantly evolving and accurate solar wind. For this, in situ solar wind measurements are needed that provide real data to adjust the models to. This limits the capability of these MHD models, but efforts are being made to develop such models for future operational use (e.g., Jin et al. 2017). Presently, ENLIL (Odstrčil 2003) is the only MHD model that is used for operational forecasting (at NOAA and the UK's Met Office Space Weather Operations Centre for example). ENLIL produces estimates of the solar wind speed, density, and temperature and magnetic field, and provides 1–4 day advance warning of disturbances that will produce geomagnetic storms, such as CMEs. To be applicable in practice, simplifications had to be made to the model. For example, ENLIL simulates the solar wind plasma and magnetic field only beyond $30 R_{\odot}$, i.e., the corona is neglected. To feed the model, the solar wind plasma flow and radial magnetic field at $30 R_{\odot}$ are provided by the semi-empirical WSA model (Wang and Sheeley 1990; Arge and Pizzo 2000). If an eruption is to be simulated, the cone model is used to set up the location, direction, and

speed of the CME (e.g., Odstrcil et al. 2005). Also, while the solar wind magnetic field is included in the model, CMEs are initiated without an internal magnetic field. Therefore, the model cannot yet be used to predict the southward component of the magnetic field during CMEs. However, observations of the CME source region can be used to give first order approximation of the magnetic configuration of the erupting structure. For example, through the detection of a flux rope and determination of the orientation of its axis and its chiral properties (e.g. Palmerio et al. 2017).

3.3 Bringing Observational and Theoretical Predictions Closer Together

There is much to be learnt from the complementary approaches of observational CME studies and theoretical work, including numerical simulations. In terms of the most promising approaches to predicting CME occurrence ahead of time, combining current observational and theoretical knowledge, there appear to be three main avenues:

- (i) Flux imbalance between a flux rope and overlying arcade
- (ii) Torus instability due to the rate of decay of the arcade overlying a flux rope
- (iii) Helicity proxy derived from the current carrying and potential field components

For (i), observations of flux cancellation can be used to investigate the flux built into the rope versus that in the overlying field. However, more work is needed to understand how the shear and spatial extent of the cancellation in the active region influence what proportion of cancelled flux is built into the rope, and what the flux imbalance criteria is. For (ii), the gradient of the overlying field can be investigated using a potential field extrapolation, but simulations so far describe rather idealised configurations and the exact stability criteria varies on a case-to-case basis. For (iii), the theoretical knowledge is still developing, but early indications suggest that there might be a critical value for the ratio of helicity in the current carrying field component to the helicity in potential component. Still, none of the above are able to give the desired several days notice of the occurrence of a CME. In addition, approaches (i) and (ii) are relevant for the flux rope concept of CMEs rather than a sheared arcade.

4 Summary

This review aims to provide a summary of the wide range of observational and theoretical work on coronal mass ejections (CMEs). These eruptions are known to be a driver of space weather, including the most severe space weather events. In response to this, an increasing number of developed and developing nations provide space weather forecasts to help mitigate the risk of economic and societal disruption resulting from the technology affected by space weather. The severe impact that results from the arrival of a CME of high velocity, southward directed magnetic field and enhanced plasma density means that there is a significant interest in forecasting these eruptions ahead of time.

Currently the physical processes at play after CME onset can be brought together in the standard CHSKP model. This captures and explains CME observations well, once the eruption is underway. However, the energy required to power a CME (and any associated flare) cannot be supplied to the corona on the timescale of the dynamic event and instead it must be built up and stored in the coronal magnetic field in the hours or days beforehand. We need to extend the standard model further back in time to understand the physical processes that create an eruptive magnetic field configuration and the associated currents, as well as the

processes that trigger and drive the eruption. CME occurrence requires more than just estimating the free magnetic energy stored in the coronal field—the free energy is a necessary but not sufficient condition. The exact magnetic field configuration and its stability need to be better characterised.

Many flare/CME forecasts currently focus on using a snapshot of the configuration of the photospheric magnetic field to provide a probabilistic forecast. Improvements to this technique are limited by the physical origins of a CME being related to the stability of the coronal field, when a trigger switches a driver on, which is unlikely to be captured in the photospheric data. CME triggers themselves can be monitored over many days using both photospheric and coronal data. But this must be supplemented with data to reveal the likelihood of a CME occurring, using either a NLFFF extrapolation or an eruptivity signature(s) determined using atmospheric observations. With no regular direct measurements of the coronal magnetic field, observations are limited to inferences obtained from plasma structures.

To move on from probabilistic forecasting, to the capability of being able to predict CME onset time, we first need a clear understanding of the criteria that encapsulates the eruptive status of the magnetic field. At what point does a CME driver switch on? Parametric modelling studies that can identify the loss of stability criteria are required and this could be determined from more realistic magnetic field configurations and their evolution. Developing the capability to conduct data driven simulations, relevant for active regions from their birth to their dispersal and decay into the background, field will greatly help this aim.

Acknowledgements LMG acknowledges support through a Royal Society University Research Fellowship and through the Leverhulme Trust Research Project Grant 2014-051. T.T. acknowledges support by NASA's LWS and H-SR programs and by NSF grants AGS-1249270, AGS-1348577, and AGS-1135432 (Sun-2-Ice). BV acknowledges the support by the Croatian Science Foundation under the project 6212 "Solar and Stellar Variability". AV acknowledges support by the Austrian Science Fund (FWF): P27292-N20. We acknowledge the International Space Science Institute (ISSI) in Bern Switzerland for their generous support and for travel and accommodation.

Open Access This article is distributed under the terms of the Creative Commons Attribution 4.0 International License (<http://creativecommons.org/licenses/by/4.0/>), which permits unrestricted use, distribution, and reproduction in any medium, provided you give appropriate credit to the original author(s) and the source, provide a link to the Creative Commons license, and indicate if changes were made.

References

- W.P. Abbett, The magnetic connection between the convection zone and corona in the quiet sun. *Astrophys. J.* **665**, 1469–1488 (2007). <https://doi.org/10.1086/519788>
- W.P. Abbett, G.H. Fisher, Y. Fan, The effects of rotation on the evolution of rising omega loops in a stratified model convection zone. *Astrophys. J.* **546**, 1194–1203 (2001). <https://doi.org/10.1086/318320>. [arXiv:astro-ph/0008501](https://arxiv.org/abs/astro-ph/0008501)
- J.J. Aly, On some properties of force-free magnetic fields in infinite regions of space. *Astrophys. J.* **283**, 349–362 (1984). <https://doi.org/10.1086/162313>
- T. Amari, J.J. Aly, Magnetic flux ropes: fundamental structures for eruptive phenomena, in *Universal Helio-physical Processes, IAU Symposium*, vol. 257, ed. by N. Gopalswamy, D.F. Webb (2009), pp. 211–222. <https://doi.org/10.1017/S1743921309029329>
- T. Amari, J.F. Luciani, J.J. Aly, M. Tagger, Plasmoid formation in a single sheared arcade and application to coronal mass ejections. *Astron. Astrophys.* **306**, 913 (1996a)
- T. Amari, J.F. Luciani, J.J. Aly, M. Tagger, Very fast opening of a three-dimensional twisted magnetic flux tube. *Astrophys. J. Lett.* **466**, L39–L42 (1996). <https://doi.org/10.1086/310158>
- T. Amari, J.F. Luciani, Z. Mikic, J. Linker, A twisted flux rope model for coronal mass ejections and two-ribbon flares. *Astrophys. J. Lett.* **529**, L49–L52 (2000). <https://doi.org/10.1086/312444>

- T. Amari, J.F. Luciani, J.J. Aly, Z. Mikic, J. Linker, Coronal mass ejection: initiation, magnetic helicity, and flux ropes. I. Boundary motion-driven evolution. *Astrophys. J.* **585**, 1073–1086 (2003a). <https://doi.org/10.1086/345501>
- T. Amari, J.F. Luciani, J.J. Aly, Z. Mikic, J. Linker, Coronal mass ejection: initiation, magnetic helicity, and flux ropes. II. Turbulent diffusion-driven evolution. *Astrophys. J.* **595**, 1231–1250 (2003b). <https://doi.org/10.1086/377444>
- M.D. Andrews, A search for CMEs associated with big flares. *Sol. Phys.* **218**, 261–279 (2003). <https://doi.org/10.1023/B:SOLA.0000013039.69550.bf>
- S.K. Antiochos, C.R. DeVore, J.A. Klimchuk, A model for solar coronal mass ejections. *Astrophys. J.* **510**, 485–493 (1999). <https://doi.org/10.1086/306563>. [arXiv:astro-ph/9807220](https://arxiv.org/abs/astro-ph/9807220)
- U. Anzer, Can coronal loop transients be driven magnetically. *Sol. Phys.* **57**, 111–118 (1978). <https://doi.org/10.1007/BF00152048>
- U. Anzer, G.W. Pneuman, Magnetic reconnection and coronal transients. *Sol. Phys.* **79**, 129–147 (1982)
- U. Anzer, E. Tandberg-Hanssen, A model for quiescent prominences with helical structure. *Sol. Phys.* **11**, 61–67 (1970). <https://doi.org/10.1007/BF00156551>
- V. Archontis, T. Török, Eruption of magnetic flux ropes during flux emergence. *Astron. Astrophys.* **492**, L35–L38 (2008). <https://doi.org/10.1051/0004-6361/200811131>. [arXiv:0811.1134](https://arxiv.org/abs/0811.1134)
- C.N. Arge, V.J. Pizzo, Improvement in the prediction of solar wind conditions using near-real time solar magnetic field updates. *J. Geophys. Res.* **105**, 10,465–10,480 (2000). <https://doi.org/10.1029/1999JA000262>
- G. Aulanier, The physical mechanisms that initiate and drive solar eruptions, in *IAU Symposium*, vol. 300, ed. by B. Schmieder, J.M. Malherbe, S.T. Wu (2014), pp. 184–196. <https://doi.org/10.1017/S1743921313010958>. [arXiv:1309.7329](https://arxiv.org/abs/1309.7329)
- G. Aulanier, P. Démoulin, R. Grappin, Equilibrium and observational properties of line-tied twisted flux tubes. *Astron. Astrophys.* **430**, 1067–1087 (2005). <https://doi.org/10.1051/0004-6361/20041519>
- G. Aulanier, T. Török, P. Démoulin, E.E. DeLuca, Formation of torus-unstable flux ropes and electric currents in erupting sigmoids. *Astrophys. J.* **708**, 314–333 (2010). <https://doi.org/10.1088/0004-637X/708/1/314>
- L.G. Bagalá, C.H. Mandrini, M.G. Rovira, P. Démoulin, Magnetic reconnection: a common origin for flares and AR interconnecting arcs. *Astron. Astrophys.* **363**, 779–788 (2000)
- G. Barnes, K.D. Leka, C.J. Schrijver, T. Colak, R. Qahwaji, O.W. Ashamari, Y. Yuan, J. Zhang, R.T.J. McAteer, D.S. Bloomfield, P.A. Higgins, P.T. Gallagher, D.A. Falconer, M.K. Georgoulis, M.S. Wheatland, C. Balch, T. Dunn, E.L. Wagner, A comparison of flare forecasting methods. I. Results from the “All-Clear” workshop. *Astrophys. J.* **829**, 89 (2016). <https://doi.org/10.3847/0004-637X/829/2/89>. [arXiv:1608.06319](https://arxiv.org/abs/1608.06319)
- V.V. Batygin, I.N. Toptygin, *Problems in Electrodynamics* (Academic Press, New York, 1962)
- B.M. Bein, S. Berkebile-Stoiser, A.M. Veronig, M. Temmer, N. Muhr, I. Kienreich, D. Utz, B. Vršnak, Impulsive acceleration of coronal mass ejections. I. Statistics and coronal mass ejection source region characteristics. *Astrophys. J.* **738**, 191 (2011). <https://doi.org/10.1088/0004-637X/738/2/191>. [arXiv:1108.0561](https://arxiv.org/abs/1108.0561)
- B.M. Bein, S. Berkebile-Stoiser, A.M. Veronig, M. Temmer, B. Vršnak, Impulsive acceleration of coronal mass ejections. II. Relation to soft X-ray flares and filament eruptions. *Astrophys. J.* **755**, 44 (2012). <https://doi.org/10.1088/0004-637X/755/1/44>. [arXiv:1206.2144](https://arxiv.org/abs/1206.2144)
- M.A. Berger, Rigorous new limits on magnetic helicity dissipation in the solar corona. *Geophys. Astrophys. Fluid Dyn.* **30**, 79–104 (1984). <https://doi.org/10.1080/03091928408210078>
- D.A. Biesecker, B.J. Thompson, Sympathetic flaring with BATSE, GOES, and EIT data. *J. Atmos. Sol.-Terr. Phys.* **62**, 1449–1455 (2000). [https://doi.org/10.1016/S1364-6826\(00\)00085-7](https://doi.org/10.1016/S1364-6826(00)00085-7)
- D. Biskamp, H. Welter, Magnetic arcade evolution and instability. *Sol. Phys.* **120**, 49–77 (1989). <https://doi.org/10.1007/BF00148534>
- D.S. Bloomfield, P.A. Higgins, R.T.J. McAteer, P.T. Gallagher, Toward reliable benchmarking of solar flare forecasting methods. *Astrophys. J. Lett.* **747**, L41 (2012). <https://doi.org/10.1088/2041-8205/747/2/L41>. [arXiv:1202.5995](https://arxiv.org/abs/1202.5995)
- M.G. Bobra, A.A. van Ballegoijen, E.E. DeLuca, Modeling nonpotential magnetic fields in solar active regions. *Astrophys. J.* **672**, 1209–1220 (2008). <https://doi.org/10.1086/523927>
- D.S. Brown, R.W. Nightingale, D. Alexander, C.J. Schrijver, T.R. Metcalf, R.A. Shine, A.M. Title, C.J. Wolfson, Observations of rotating sunspots from TRACE. *Sol. Phys.* **216**, 79–108 (2003). <https://doi.org/10.1023/A:1026138413791>
- P.K. Browning, E.R. Priest, The structure of twisted magnetic flux tubes. *Astrophys. J.* **266**, 848–865 (1983). <https://doi.org/10.1086/160833>
- V. Bumba, M. Klvana, Questions concerning the existence of sympathetic flares. *Astrophys. Space Sci.* **199**, 45–52 (1993). <https://doi.org/10.1007/BF00612976>

- F.N. Byrne, M.A. Ellison, J.H. Reid, A survey of solar flare phenomena. *Space Sci. Rev.* **3**, 319–341 (1964). <https://doi.org/10.1007/BF00230516>
- R.C. Canfield, H.S. Hudson, D.E. McKenzie, Sigmoidal morphology and eruptive solar activity. *Geophys. Res. Lett.* **26**, 627–630 (1999). <https://doi.org/10.1029/1999GL900105>
- R.C. Canfield, M.D. Kazachenko, L.W. Acton, D.H. Mackay, J. Son, T.L. Freeman, Yohkoh SXT full-resolution observations of sigmoids: structure, formation, and eruption. *Astrophys. J. Lett.* **671**, L81–L84 (2007). <https://doi.org/10.1086/524729>
- H. Carmichael, A process for flares. *NASA Spec. Publ.* **50**, 451 (1964)
- J. Chen, Effects of toroidal forces in current loops embedded in a background plasma. *Astrophys. J.* **338**, 453–470 (1989). <https://doi.org/10.1086/167211>
- J. Chen, Physics of coronal mass ejections: a new paradigm of solar eruptions. *Space Sci. Rev.* **95**, 165–190 (2001)
- J. Chen, Physics of erupting solar flux ropes: coronal mass ejections (CMEs)—recent advances in theory and observation. *Phys. Plasmas* **24**(9), 090501 (2017). <https://doi.org/10.1063/1.4993929>
- J. Chen, J. Krall, Acceleration of coronal mass ejections. *J. Geophys. Res.* **108**, 1410 (2003). <https://doi.org/10.1029/2003JA009849>
- P.F. Chen, Coronal mass ejections: models and their observational basis. *Living Rev. Sol. Phys.* **8**, 1 (2011). <https://doi.org/10.12942/lrsp-2011-1>
- P.F. Chen, K. Shibata, An emerging flux trigger mechanism for coronal mass ejections. *Astrophys. J.* **545**, 524–531 (2000). <https://doi.org/10.1086/317803>
- J. Cheng, C. Fang, P. Chen, M. Ding, Two sympathetic homologous CMEs on 2002 May 22. *Chin. J. Astron. Astrophys.* **5**, 265–272 (2005). <https://doi.org/10.1088/1009-9271/5/3/006>
- X. Cheng, J. Zhang, Y. Liu, M.D. Ding, Observing flux rope formation during the impulsive phase of a solar eruption. *Astrophys. J. Lett.* **732**, L25 (2011). <https://doi.org/10.1088/2041-8205/732/2/L25>. [arXiv:1103.5084](https://arxiv.org/abs/1103.5084)
- X. Cheng, M.D. Ding, J. Zhang, X.D. Sun, Y. Guo, Y.M. Wang, B. Kliem, Y.Y. Deng, Formation of a double-decker magnetic flux rope in the sigmoidal solar active region 11520. *Astrophys. J.* **789**, 93 (2014). <https://doi.org/10.1088/0004-637X/789/2/93>. [arXiv:1405.4923](https://arxiv.org/abs/1405.4923)
- M.C.M. Cheung, M. Rempel, A.M. Title, M. Schüssler, Simulation of the formation of a solar active region. *Astrophys. J.* **720**, 233–244 (2010). <https://doi.org/10.1088/0004-637X/720/1/233>. [arXiv:1006.4117](https://arxiv.org/abs/1006.4117)
- G. Chintzoglou, S. Patsourakos, A. Vourlidas, Formation of magnetic flux ropes during a confined flaring well before the onset of a pair of major coronal mass ejections. *Astrophys. J.* **809**, 34 (2015). <https://doi.org/10.1088/0004-637X/809/1/34>. [arXiv:1507.01165](https://arxiv.org/abs/1507.01165)
- G.S. Choe, L.C. Lee, Evolution of solar magnetic arcades. I. Ideal MHD evolution under footpoint shearing. *Astrophys. J.* **472**, 360 (1996a). <https://doi.org/10.1086/178069>
- G.S. Choe, L.C. Lee, Evolution of solar magnetic arcades. II. Effect of resistivity and solar eruptive processes. *Astrophys. J.* **472**, 372 (1996b). <https://doi.org/10.1086/178070>
- A. Ciaravella, J.C. Raymond, The current sheet associated with the 2003 November 4 coronal mass ejection: density, temperature, thickness, and line width. *Astrophys. J.* **686**, 1372–1382 (2008). <https://doi.org/10.1086/590655>
- E.W. Cliver, L. Svalgaard, The 1859 solar-terrestrial disturbance and the current limits of extreme space weather activity. *Sol. Phys.* **224**, 407–422 (2004). <https://doi.org/10.1007/s11207-005-4980-z>
- O. Cohen, G.D.R. Attrill, W.B. Manchester IV, M.J. Wills-Davey, Numerical simulation of an EUV coronal wave based on the 2009 February 13 CME event observed by STEREO. *Astrophys. J.* **705**, 587 (2009). <https://doi.org/10.1088/0004-637X/705/1/587>. [arXiv:0909.3095](https://arxiv.org/abs/0909.3095)
- T. Colak, R. Qahwaji, Automated McIntosh-based classification of sunspot groups using MDI images. *Sol. Phys.* **248**, 277–296 (2008). <https://doi.org/10.1007/s11207-007-9094-3>
- T. Colak, R. Qahwaji, Automated solar activity prediction: a hybrid computer platform using machine learning and solar imaging for automated prediction of solar flares. *Space Weather* **7**, S06001 (2009). <https://doi.org/10.1029/2008SW000401>
- P. Démoulin, G. Aulanier, Criteria for flux rope eruption: non-equilibrium versus torus instability. *Astrophys. J.* **718**, 1388–1399 (2010). <https://doi.org/10.1088/0004-637X/718/2/1388>. [arXiv:1006.1785](https://arxiv.org/abs/1006.1785)
- P. Démoulin, M.A. Berger, Magnetic energy and helicity fluxes at the photospheric level. *Sol. Phys.* **215**, 203–215 (2003). <https://doi.org/10.1023/A:1025679813955>
- P. Démoulin, J.C. Henoux, E.R. Priest, C.H. Mandrini, Quasi-separatrix layers in solar flares. I. Method. *Astron. Astrophys.* **308**, 643–655 (1996)
- P. Démoulin, C.H. Mandrini, L. van Driel-Gesztelyi, B.J. Thompson, S. Plunkett, Z. Kovári, G. Aulanier, A. Young, What is the source of the magnetic helicity shed by CMEs? The long-term helicity budget of AR 9798. *Astron. Astrophys.* **382**, 650–665 (2002). <https://doi.org/10.1051/0004-6361:20011634>

- N. Deng, Y. Xu, G. Yang, W. Cao, C. Liu, T.R. Rimmele, H. Wang, C. Denker, Multiwavelength study of flow fields in flaring super active region NOAA 10486. *Astrophys. J.* **644**, 1278–1291 (2006). <https://doi.org/10.1086/503600>
- C.R. DeVore, S.K. Antiochos, Magnetic free energies of breakout coronal mass ejections. *Astrophys. J.* **628**, 1031–1045 (2005). <https://doi.org/10.1086/431141>
- J.Y. Ding, Y.Q. Hu, J.X. Wang, Catastrophic behavior of multiple coronal flux rope system. *Sol. Phys.* **235**, 223–234 (2006). <https://doi.org/10.1007/s11207-006-0092-7>
- C. Downs, I.I. Roussev, B. van der Holst, N. Lugaz, I.V. Sokolov, T.I. Gombosi, Studying extreme ultraviolet wave transients with a digital laboratory: direct comparison of extreme ultraviolet wave observations to global magnetohydrodynamic simulations. *Astrophys. J.* **728**, 2–17 (2011). <https://doi.org/10.1088/0004-637X/728/1/2>
- G. Dubey, B. van der Holst, S. Poedts, Initiation of CMEs by magnetic flux emergence. *J. Astrophys. Astron.* **27**, 159–166 (2006). <https://doi.org/10.1007/BF02702518>
- P. Duchlev, K. Koleva, M.S. Madjarska, M. Dechev, Homologous prominence non-radial eruptions: a case study. *New Astron.* **48**, 66–73 (2016). <https://doi.org/10.1016/j.newast.2016.05.001>. arXiv:1605.02299
- G.A. Dulk, D.J. McLean, Coronal magnetic fields. *Sol. Phys.* **57**, 279–295 (1978). <https://doi.org/10.1007/BF00160102>
- M. Dumbović, A. Devos, B. Vršnak, D. Sudar, L. Rodriguez, D. Ruždjak, K. Leer, S. Vennerstrøm, A. Veronig, Geoeffectiveness of coronal mass ejections in the SOHO era. *Sol. Phys.* **290**, 579–612 (2015). <https://doi.org/10.1007/s11207-014-0613-8>. arXiv:1410.3303
- M.A. Ellison, S.M.P. McKenna, J.H. Reid, Flares associated with the 1960 November event and the flare nimbus phenomenon. *Mon. Not. R. Astron. Soc.* **122**, 491 (1961). <https://doi.org/10.1093/mnras/122.6.491>
- D.A. Falconer, R.L. Moore, G.A. Gary, Correlation of the coronal mass ejection productivity of solar active regions with measures of their global nonpotentiality from vector magnetograms: baseline results. *Astrophys. J.* **569**, 1016–1025 (2002). <https://doi.org/10.1086/339161>
- D.A. Falconer, R.L. Moore, G.A. Gary, Magnetic causes of solar coronal mass ejections: dominance of the free magnetic energy over the magnetic twist alone. *Astrophys. J.* **644**, 1258–1272 (2006). <https://doi.org/10.1086/503699>
- D.A. Falconer, R.L. Moore, G.A. Gary, Magnetogram measures of total nonpotentiality for prediction of solar coronal mass ejections from active regions of any degree of magnetic complexity. *Astrophys. J.* **689**, 1433–1442 (2008). <https://doi.org/10.1086/591045>
- D.A. Falconer, R.L. Moore, A.F. Barghouty, I. Khazanov, Prior flaring as a complement to free magnetic energy for forecasting solar eruptions. *Astrophys. J.* **757**, 32 (2012). <https://doi.org/10.1088/0004-637X/757/1/32>
- Y. Fan, The emergence of a twisted Ω -tube into the solar atmosphere. *Astrophys. J. Lett.* **554**, L111–L114 (2001). <https://doi.org/10.1086/320935>
- Y. Fan, F. Fang, A simulation of convective dynamo in the solar convective envelope: maintenance of the solar-like differential rotation and emerging flux. *Astrophys. J.* **789**, 35 (2014). <https://doi.org/10.1088/0004-637X/789/1/35>. arXiv:1405.3926
- Y. Fan, S.E. Gibson, The emergence of a twisted magnetic flux tube into a preexisting coronal arcade. *Astrophys. J. Lett.* **589**, L105–L108 (2003). <https://doi.org/10.1086/375834>
- Y. Fan, S.E. Gibson, Onset of coronal mass ejections due to loss of confinement of coronal flux ropes. *Astrophys. J.* **668**, 1232–1245 (2007). <https://doi.org/10.1086/521335>
- F. Fang, W. Manchester, W.P. Abbett, B. van der Holst, Simulation of flux emergence from the convection zone to the corona. *Astrophys. J.* **714**, 1649–1657 (2010). <https://doi.org/10.1088/0004-637X/714/2/1649>. arXiv:1003.6118
- F. Fang, W. Manchester IV, W.P. Abbett, B. van der Holst, Buildup of magnetic shear and free energy during flux emergence and cancellation. *Astrophys. J.* **754**, 15 (2012a). <https://doi.org/10.1088/0004-637X/754/1/15>. arXiv:1205.3764
- F. Fang, W. Manchester IV, W.P. Abbett, B. van der Holst, Dynamic coupling of convective flows and magnetic field during flux emergence. *Astrophys. J.* **745**, 37 (2012b). <https://doi.org/10.1088/0004-637X/745/1/37>. arXiv:1111.1679
- J. Feynman, A.J. Hundhausen, Coronal mass ejections and major solar flares: the great active center of March 1989. *J. Geophys. Res.* **99**, 8451–8464 (1994). <https://doi.org/10.1029/94JA00202>
- J. Feynman, S.F. Martin, The initiation of coronal mass ejections by newly emerging magnetic flux. *J. Geophys. Res.* **100**, 3355–3367 (1995). <https://doi.org/10.1029/94JA02591>
- B. Filippov, O. Martsenyuk, A.K. Srivastava, W. Uddin, Solar magnetic flux ropes. *J. Astrophys. Astron.* **36**, 157–184 (2015). <https://doi.org/10.1007/s12036-015-9321-5>. arXiv:1501.02562
- T.G. Forbes, A review on the genesis of coronal mass ejections. *J. Geophys. Res.* **105**, 23,153–23,166 (2000). <https://doi.org/10.1029/2000JA000005>

- T.G. Forbes, P.A. Isenberg, A catastrophe mechanism for coronal mass ejections. *Astrophys. J.* **373**, 294–307 (1991). <https://doi.org/10.1086/170051>
- T.G. Forbes, J.A. Linker, J. Chen, C. Cid, J. Kóta, M.A. Lee, G. Mann, Z. Mikić, M.S. Potgieter, J.M. Schmidt, G.L. Siscoe, R. Vainio, S.K. Antiochos, P. Riley, CME theory and models. *Space Sci. Rev.* **123**, 251–302 (2006). <https://doi.org/10.1007/s11214-006-9019-8>
- L. Fritzova-Svestkova, R.C. Chase, Z. Svestka, On the occurrence of sympathetic flares. *Sol. Phys.* **48**, 275–286 (1976). <https://doi.org/10.1007/BF00151996>
- D.A. Garren, J. Chen, Lorentz self-forces on curved current loops. *Phys. Plasmas* **1**, 3425–3436 (1994). <https://doi.org/10.1063/1.870491>
- G.A. Gary, Plasma beta above a solar active region: rethinking the paradigm. *Sol. Phys.* **203**, 71–86 (2001)
- M.K. Georgoulis, D.M. Rust, Quantitative forecasting of major solar flares. *Astrophys. J. Lett.* **661**, L109–L112 (2007). <https://doi.org/10.1086/518718>
- M.K. Georgoulis, V.S. Titov, Z. Mikić, Non-neutralized electric current patterns in solar active regions: origin of the shear-generating Lorentz force. *Astrophys. J.* **761**, 61 (2012). <https://doi.org/10.1088/0004-637X/761/1/61>. arXiv:1210.2919
- C.L. Gerrard, T.D. Arber, A.W. Hood, R.A.M. Van der Linden, Numerical simulations of kink instability in line-tied coronal loops. *Astron. Astrophys.* **373**, 1089–1098 (2001). <https://doi.org/10.1051/0004-6361:20010678>
- G.P.S. Gibb, D.H. Mackay, L.M. Green, K.A. Meyer, Simulating the formation of a sigmoidal flux rope in AR10977 from SOHO/MDI magnetograms. *Astrophys. J.* **782**, 71 (2014). <https://doi.org/10.1088/0004-637X/782/2/71>
- T. Gold, Magnetic storms. *Space Sci. Rev.* **1**, 100–114 (1962). <https://doi.org/10.1007/BF00174637>
- T. Gold, F. Hoyle, On the origin of solar flares. *Mon. Not. R. Astron. Soc.* **120**, 89 (1960)
- N. Gopalswamy, A. Lara, S. Yashiro, M.L. Kaiser, R.A. Howard, Predicting the 1-AU arrival times of coronal mass ejections. *J. Geophys. Res.* **106**, 29,207–29,218 (2001). <https://doi.org/10.1029/2001JA000177>
- N. Gopalswamy, S. Yashiro, Y. Liu, G. Michalek, A. Vourlidas, M.L. Kaiser, R.A. Howard, Coronal mass ejections and other extreme characteristics of the 2003 October–November solar eruptions. *J. Geophys. Res. Space Phys.* **110**, A09S15 (2005). <https://doi.org/10.1029/2004JA010958>
- J.T. Gosling, The solar flare myth. *J. Geophys. Res.* **98**, 18,937–18,950 (1993). <https://doi.org/10.1029/93JA01896>
- L. Green, D. Baker, Coronal mass ejections: a driver of severe space weather. *Weather* **70**(1), 31–35 (2015). <https://doi.org/10.1002/wea.2437>
- L.M. Green, B. Kliem, Flux rope formation preceding coronal mass ejection onset. *Astrophys. J. Lett.* **700**, L83–L87 (2009). <https://doi.org/10.1088/0004-637X/700/2/L83>. arXiv:0906.4794
- L.M. Green, B. Kliem, Observations of flux rope formation prior to coronal mass ejections, in *Nature of Prominences and Their Role in Space Weather, IAU Symposium*, vol. 300, ed. by B. Schmieder, J.M. Malherbe, S.T. Wu (2014), pp. 209–214. <https://doi.org/10.1017/S1743921313010983>. arXiv:1312.4388
- L.M. Green, M.C. López fuentes, C.H. Mandrini, P. Démoulin, L. Van Driel-Gesztelyi, J.L. Culhane, The magnetic helicity budget of a CME-prolific active region. *Sol. Phys.* **208**, 43–68 (2002). <https://doi.org/10.1023/A:1019658520033>
- L.M. Green, P. Démoulin, C.H. Mandrini, L. Van Driel-Gesztelyi, How are emerging flux, flares and CMEs related to magnetic polarity imbalance in MDI data? *Sol. Phys.* **215**, 307–325 (2003). <https://doi.org/10.1023/A:1025678917086> arXiv:astro-ph/0304092
- L.M. Green, B. Kliem, T. Török, L. van Driel-Gesztelyi, G.D.R. Attrill, Transient coronal sigmoids and rotating erupting flux ropes. *Sol. Phys.* **246**, 365–391 (2007). <https://doi.org/10.1007/s11207-007-9061-z>
- L.M. Green, B. Kliem, A.J. Wallace, Photospheric flux cancellation and associated flux rope formation and eruption. *Astron. Astrophys.* **526**, A2 (2011). <https://doi.org/10.1051/0004-6361/201015146>. arXiv:1011.1227
- Y. Guo, M.D. Ding, B. Schmieder, H. Li, T. Török, T. Wiegmann, Driving mechanism and onset condition of a confined eruption. *Astrophys. J. Lett.* **725**, L38–L42 (2010). <https://doi.org/10.1088/2041-8205/725/1/L38>
- M.J. Hagyard, D. Teuber, E.A. West, J.B. Smith, A quantitative study relating observed shear in photospheric magnetic fields to repeated flaring. *Sol. Phys.* **91**, 115–126 (1984). <https://doi.org/10.1007/BF00213618>
- G. Hale, F. Ellerman, S. Nicholson, A. Joy, The magnetic polarity of sun-spots. *Astrophys. J.* **49**, 153–178 (1919). <https://doi.org/10.1086/142452>
- J. Heyvaerts, E.R. Priest, Coronal heating by reconnection in DC current systems—a theory based on Taylor’s hypothesis. *Astron. Astrophys.* **137**, 63–78 (1984)
- P.A. Higgins, P.T. Gallagher, R.T.J. McAteer, D.S. Bloomfield, Solar magnetic feature detection and tracking for space weather monitoring. *Adv. Space Res.* **47**, 2105–2117 (2011). <https://doi.org/10.1016/j.asr.2010.06.024>. arXiv:1006.5898

- T. Hirayama, Theoretical model of flares and prominences. I: evaporating flare model. *Sol. Phys.* **34**, 323–338 (1974). <https://doi.org/10.1007/BF00153671>
- A. Hofmann, V. Ruzdjak, B. Vrsnak, A study on electric currents in a solar active region—a dynamo process at a place of repeated flaring. *Hvar Obs. Bull.* **16**, 29 (1992)
- A.W. Hood, E.R. Priest, Kink instability of solar coronal loops as the cause of solar flares. *Sol. Phys.* **64**, 303–321 (1979). <https://doi.org/10.1007/BF00151441>
- T.A. Howard, R.A. Harrison, Stealth coronal mass ejections: a perspective. *Sol. Phys.* **285**, 269–280 (2013). <https://doi.org/10.1007/s11207-012-0217-0>
- Q. Hu, J. Qiu, B. Dasgupta, A. Khare, G.M. Webb, Structures of interplanetary magnetic flux ropes and comparison with their solar sources. *Astrophys. J.* **793**, 53 (2014). <https://doi.org/10.1088/0004-637X/793/1/53>. arXiv:1408.1470
- A.J. Hundhausen, Sizes and locations of coronal mass ejections—SMM observations from 1980 and 1984–1989. *J. Geophys. Res.* **98**, 13,177 (1993). <https://doi.org/10.1029/93JA00157>
- C.L. Hyder, A phenomenological model for disruptions brusques followed by flarelike chromospheric brightenings, I: the model, its consequences, and observations in quiet solar regions. *Sol. Phys.* **2**, 49–74 (1967). <https://doi.org/10.1007/BF00155892>
- R.M.E. Illing, A.J. Hundhausen, Observation of a coronal transient from 1.2 to 6 solar radii. *J. Geophys. Res.* **90**, 275–282 (1985). <https://doi.org/10.1029/JA090iA01p00275>
- R.M.E. Illing, A.J. Hundhausen, Disruption of a coronal streamer by an eruptive prominence and coronal mass ejection. *J. Geophys. Res.* **91**, 10,951–10,960 (1986). <https://doi.org/10.1029/JA091iA10p10951>
- B. Inhester, J. Birn, M. Hesse, The evolution of line-tied coronal arcades including a converging footpoint motion. *Sol. Phys.* **138**, 257–281 (1992)
- S. Inoue, Magnetohydrodynamics modeling of coronal magnetic field and solar eruptions based on the photospheric magnetic field. *Prog. Earth Planet. Sci.* **3**, 19 (2016). <https://doi.org/10.1186/s40645-016-0084-7>
- N. Ishiguro, K. Kusano, Double arc instability in the solar corona. *Astrophys. J.* **843**, 101 (2017). <https://doi.org/10.3847/1538-4357/aa799b>. arXiv:1706.06112
- B.V. Jackson, A. Buffington, P.P. Hick, R.C. Altrock, S. Figueroa, P.E. Holladay, J.C. Johnston, S.W. Kahler, J.B. Mozer, S. Price, R.R. Radick, R. Sagalyn, D. Sinclair, G.M. Simnett, C.J. Eyles, M.P. Cooke, S.J. Tappin, T. Kuchar, D. Mizuno, D.F. Webb, P.A. Anderson, S.L. Keil, R.E. Gold, N.R. Waltham, The Solar Mass-Ejection Imager (SMEI) mission. *Sol. Phys.* **225**, 177–207 (2004). <https://doi.org/10.1007/s11207-004-2766-3>
- C. Jacobs, S. Poedts, Models for coronal mass ejections. *J. Atmos. Sol.-Terr. Phys.* **73**, 1148–1155 (2011). <https://doi.org/10.1016/j.jastp.2010.12.002>
- C. Jacobs, S. Poedts, A numerical study of the response of the coronal magnetic field to flux emergence. *Sol. Phys.* **280**, 389–405 (2012). <https://doi.org/10.1007/s11207-012-9941-8>
- C. Jacobs, S. Poedts, B. van der Holst, The effect of the solar wind on CME triggering by magnetic foot point shearing. *Astron. Astrophys.* **450**, 793–803 (2006). <https://doi.org/10.1051/0004-6361:20054670>
- C. Jacobs, I.I. Roussev, N. Lugaz, S. Poedts, The internal structure of coronal mass ejections: are all regular magnetic clouds flux ropes? *Astrophys. J. Lett.* **695**, L171–L175 (2009). <https://doi.org/10.1088/0004-637X/695/2/L171>
- A.W. James, L.M. Green, E. Palmerio, G. Valori, H.A.S. Reid, D. Baker, D.H. Brooks, L. van Driel-Gesztelyi, E.K.J. Kilpua, On-disc observations of flux rope formation prior to its eruption. *Sol. Phys.* **292**, 71 (2017). <https://doi.org/10.1007/s11207-017-1093-4>. arXiv:1703.10837
- Y. Jiang, Y. Shen, B. Yi, J. Yang, J. Wang, Magnetic interaction: a transequatorial jet and interconnecting loops. *Astrophys. J.* **677**, 699–703 (2008). <https://doi.org/10.1086/529417>
- Y. Jiang, J. Yang, J. Hong, Y. Bi, R. Zheng, Sympathetic filament eruptions connected by coronal dimmings. *Astrophys. J.* **738**, 179 (2011). <https://doi.org/10.1088/0004-637X/738/2/179>
- M. Jin, C.J. Schrijver, M.C.M. Cheung, M.L. DeRosa, N.V. Nitta, A.M. Title, A numerical study of long-range magnetic impacts during coronal mass ejections. *Astrophys. J.* **820**, 16 (2016). <https://doi.org/10.3847/0004-637X/820/1/16>. arXiv:1603.04900
- M. Jin, W.B. Manchester, B. van der Holst, I. Sokolov, G. Tóth, R.E. Mullinix, A. Taktakishvili, A. Chulaki, T.I. Gombosi, Data-constrained coronal mass ejections in a global magnetohydrodynamics model. *Astrophys. J.* **834**, 173 (2017). <https://doi.org/10.3847/1538-4357/834/2/173>. arXiv:1605.05360
- J. Jing, C. Tan, Y. Yuan, B. Wang, T. Wiegmann, Y. Xu, H. Wang, Free magnetic energy and flare productivity of active regions. *Astrophys. J.* **713**, 440–449 (2010). <https://doi.org/10.1088/0004-637X/713/1/440>
- K. Jockers, Transport of twist in force-free magnetic flux tubes. *Astrophys. J.* **220**, 1133–1136 (1978). <https://doi.org/10.1086/155998>
- N.C. Joshi, B. Schmieder, T. Magara, Y. Guo, G. Aulanier, Chain reconnections observed in sympathetic eruptions. *Astrophys. J.* **820**, 126 (2016). <https://doi.org/10.3847/0004-637X/820/2/126>. arXiv:1602.07792

- S.W. Kahler, The correlation between solar energetic particle peak intensities and speeds of coronal mass ejections: effects of ambient particle intensities and energy spectra. *J. Geophys. Res.* **106**, 20,947–20,956 (2001). <https://doi.org/10.1029/2000JA002231>
- S.W. Kahler, R.L. Moore, S.R. Kane, H. Zirin, Filament eruptions and the impulsive phase of solar flares. *Astrophys. J.* **328**, 824–829 (1988). <https://doi.org/10.1086/166340>
- J.T. Karpen, S.K. Antiochos, C.R. DeVore, The mechanisms for the onset and explosive eruption of coronal mass ejections and eruptive flares. *Astrophys. J.* **760**, 81 (2012). <https://doi.org/10.1088/0004-637X/760/1/81>
- R. Keppens, O. Porth, C. Xia, Interacting tilt and kink instabilities in repelling current channels. *Astrophys. J.* **795**, 77 (2014). <https://doi.org/10.1088/0004-637X/795/1/77>. [arXiv:1409.4543](https://arxiv.org/abs/1409.4543)
- J.I. Khan, H.S. Hudson, Homologous sudden disappearances of transequatorial interconnecting loops in the solar corona. *Geophys. Res. Lett.* **27**, 1083 (2000). <https://doi.org/10.1029/1999GL010730>
- E.K.J. Kilpua, M. Mierla, A.N. Zhukov, L. Rodriguez, A. Vourlidas, B. Wood, Solar sources of interplanetary coronal mass ejections during the solar cycle 23/24 minimum. *Sol. Phys.* **289**, 3773–3797 (2014). <https://doi.org/10.1007/s11207-014-0552-4>
- R. Kippenhahn, A. Schlüter, Eine Theorie der solaren Filamente. Mit 7 Textabbildungen. *Z. Astrophys.* **43**, 36 (1957)
- I.N. Kitiashvili, A.G. Kosovichev, A.A. Wray, N.N. Mansour, Mechanism of spontaneous formation of stable magnetic structures on the Sun. *Astrophys. J.* **719**, 307–312 (2010). <https://doi.org/10.1088/0004-637X/719/1/307>. [arXiv:1004.2288](https://arxiv.org/abs/1004.2288)
- J. Kleimann, 4 π models of CMEs and ICMEs (Invited review). *Sol. Phys.* **281**, 353–367 (2012). <https://doi.org/10.1007/s11207-012-9994-8>. [arXiv:1203.6187](https://arxiv.org/abs/1203.6187)
- B. Kliem, T. Török, Torus instability. *Phys. Rev. Lett.* **255**, 002 (2006). <https://doi.org/10.1103/PhysRevLett.96.255002>. [arXiv:physics/0605217](https://arxiv.org/abs/physics/0605217)
- B. Kliem, T. Török, W.T. Thompson, A parametric study of erupting flux rope rotation. Modeling the “Cartwheel CME” on 9 April 2008. *Sol. Phys.* **281**, 137–166 (2012). <https://doi.org/10.1007/s11207-012-9990-z>. [arXiv:1112.3389](https://arxiv.org/abs/1112.3389)
- B. Kliem, J. Lin, T.G. Forbes, E.R. Priest, T. Török, Catastrophe versus instability for the eruption of a toroidal solar magnetic flux rope. *Astrophys. J.* **789**, 46 (2014a). <https://doi.org/10.1088/0004-637X/789/1/46>. [arXiv:1404.5922](https://arxiv.org/abs/1404.5922)
- B. Kliem, T. Török, V.S. Titov, R. Lionello, J.A. Linker, R. Liu, C. Liu, H. Wang, Slow rise and partial eruption of a double-decker filament. II. A double flux rope model. *Astrophys. J.* **792**, 107 (2014b). <https://doi.org/10.1088/0004-637X/792/2/107>. [arXiv:1407.2272](https://arxiv.org/abs/1407.2272)
- J.A. Klimchuk, *Theory of Coronal Mass Ejections*. Geophysical Monograph Series, vol. 125 (American Geophysical Union, Washington, 2001). <https://doi.org/10.1029/GM125p0143>
- J.A. Klimchuk, P.A. Sturrock, Three-dimensional force-free magnetic fields and flare energy buildup. *Astrophys. J.* **385**, 344–353 (1992). <https://doi.org/10.1086/170943>
- Y.K. Ko, J.C. Raymond, J. Lin, G. Lawrence, J. Li, A. Fludra, Dynamical and physical properties of a post-coronal mass ejection current sheet. *Astrophys. J.* **594**, 1068–1084 (2003). <https://doi.org/10.1086/376982>
- R.A. Kopp, G.W. Pneuman, Magnetic reconnection in the corona and the loop prominence phenomenon. *Sol. Phys.* **50**, 85–98 (1976). <https://doi.org/10.1007/BF00206193>
- V. Kunkel, J. Chen, Evolution of a coronal mass ejection and its magnetic field in interplanetary space. *Astrophys. J. Lett.* **715**, L80–L83 (2010). <https://doi.org/10.1088/2041-8205/715/2/L80>
- M. Kuperus, M.A. Raadu, The support of prominences formed in neutral sheets. *Astron. Astrophys.* **31**, 189 (1974)
- K. Kusano, T. Maeshiro, T. Yokoyama, T. Sakurai, The trigger mechanism of solar flares in a coronal arcade with reversed magnetic shear. *Astrophys. J.* **610**, 537–549 (2004). <https://doi.org/10.1086/421547>
- K. Kusano, Y. Bamba, T.T. Yamamoto, Y. Iida, S. Toriumi, A. Asai, Magnetic field structures triggering solar flares and coronal mass ejections. *Astrophys. J.* **760**, 31 (2012). <https://doi.org/10.1088/0004-637X/760/1/31>. [arXiv:1210.0598](https://arxiv.org/abs/1210.0598)
- B.J. LaBonte, M.K. Georgoulis, D.M. Rust, Survey of magnetic helicity injection in regions producing X-class flares. *Astrophys. J.* **671**, 955–963 (2007). <https://doi.org/10.1086/522682>
- J.E. Leake, M.G. Linton, T. Török, Simulations of emerging magnetic flux. I. The formation of stable coronal flux ropes. *Astrophys. J.* **778**, 99 (2013). <https://doi.org/10.1088/0004-637X/778/2/99>. [arXiv:1308.6204](https://arxiv.org/abs/1308.6204)
- J.E. Leake, M.G. Linton, S.K. Antiochos, Simulations of emerging magnetic flux. II. The formation of unstable coronal flux ropes and the initiation of coronal mass ejections. *Astrophys. J.* **787**, 46 (2014). <https://doi.org/10.1088/0004-637X/787/1/46>. [arXiv:1402.2645](https://arxiv.org/abs/1402.2645)
- K.D. Leka, G. Barnes, Photospheric magnetic field properties of flaring versus flare-quiet active regions. I. Data, general approach, and sample results. *Astrophys. J.* **595**, 1277–1295 (2003a). <https://doi.org/10.1086/377511>

- K.D. Leka, G. Barnes, Photospheric magnetic field properties of flaring versus flare-quiet active regions. II. Discriminant analysis. *Astrophys. J.* **595**, 1296–1306 (2003b). <https://doi.org/10.1086/377512>
- K.D. Leka, G. Barnes, Photospheric magnetic field properties of flaring versus flare-quiet active regions. IV. A statistically significant sample. *Astrophys. J.* **656**, 1173–1186 (2007). <https://doi.org/10.1086/510282>
- K.D. Leka, R.C. Canfield, A.N. McClymont, L. van Driel-Gesztelyi, Evidence for current-carrying emerging flux. *Astrophys. J.* **462**, 547 (1996). <https://doi.org/10.1086/177171>
- J. Lin, T.G. Forbes, Effects of reconnection on the coronal mass ejection process. *J. Geophys. Res.* **105**, 2375–2392 (2000). <https://doi.org/10.1029/1999JA900477>
- J. Lin, T.G. Forbes, P.A. Isenberg, P. Démoulin, The effect of curvature on flux-rope models of coronal mass ejections. *Astrophys. J.* **504**, 1006–1019 (1998). <https://doi.org/10.1086/306108>
- J. Lin, T.G. Forbes, P.A. Isenberg, Prominence eruptions and coronal mass ejections triggered by newly emerging flux. *J. Geophys. Res.* **106**, 25,053–25,074 (2001). <https://doi.org/10.1029/2001JA000046>
- J. Lin, W. Soon, S.L. Baliunas, Theories of solar eruptions: a review. *New Astron. Rev.* **47**, 53–84 (2003)
- J. Lin, Y.K. Ko, L. Sui, J.C. Raymond, G.A. Stenborg, Y. Jiang, S. Zhao, S. Mancuso, Direct observations of the magnetic reconnection site of an eruption on 2003 November 18. *Astrophys. J.* **622**, 1251–1264 (2005). <https://doi.org/10.1086/428110>
- J.A. Linker, R. Lionello, Z. Mikić, T. Amari, Magnetohydrodynamic modeling of prominence formation within a helmet streamer. *J. Geophys. Res.* **106**, 25,165–25,176 (2001). <https://doi.org/10.1029/2000JA004020>
- J.A. Linker, Z. Mikić, R. Lionello, P. Riley, T. Amari, D. Odstrcil, Flux cancellation and coronal mass ejections. *Phys. Plasmas* **10**, 1971–1978 (2003)
- M.G. Linton, M.B. Moldwin, A comparison of the formation and evolution of magnetic flux ropes in solar coronal mass ejections and magnetotail plasmoids. *J. Geophys. Res. Space Phys.* **114**, A00B09 (2009). <https://doi.org/10.1029/2008JA013660>
- M.G. Linton, R.B. Dahlburg, S.K. Antiochos, Reconnection of twisted flux tubes as a function of contact angle. *Astrophys. J.* **553**, 905–921 (2001). <https://doi.org/10.1086/320974>
- Y.E. Litvinenko, S.F. Martin, Magnetic reconnection as the cause of a photospheric canceling feature and mass flows in a filament. *Sol. Phys.* **190**, 45–58 (1999). <https://doi.org/10.1023/A:1005284116353>
- C. Liu, N. Deng, Y. Liu, D. Falconer, P.R. Goode, C. Denker, H. Wang, Rapid change of δ spot structure associated with seven major flares. *Astrophys. J.* **622**, 722–736 (2005). <https://doi.org/10.1086/427868>
- C. Liu, J. Lee, M. Karlický, D. Prasad Choudhary, N. Deng, H. Wang, Successive solar flares and coronal mass ejections on 2005 September 13 from NOAA AR 10808. *Astrophys. J.* **703**, 757–768 (2009). <https://doi.org/10.1088/0004-637X/703/1/757>. [arXiv:0908.0487](https://arxiv.org/abs/0908.0487)
- R. Liu, C. Liu, S. Wang, N. Deng, H. Wang, Sigmoid-to-flux-rope transition leading to a loop-like coronal mass ejection. *Astrophys. J. Lett.* **725**, L84–L90 (2010). <https://doi.org/10.1088/2041-8205/725/1/L84>. [arXiv:1011.1181](https://arxiv.org/abs/1011.1181)
- R. Liu, B. Kliem, V.S. Titov, J. Chen, Y. Wang, H. Wang, C. Liu, Y. Xu, T. Wiegmann, Structure, stability, and evolution of magnetic flux ropes from the perspective of magnetic twist. *Astrophys. J.* **818**, 148 (2016). <https://doi.org/10.3847/0004-637X/818/2/148>. [arXiv:1512.02338](https://arxiv.org/abs/1512.02338)
- Y. Liu, Magnetic field overlying solar eruption regions and kink and torus instabilities. *Astrophys. J. Lett.* **679**, L151 (2008). <https://doi.org/10.1086/589282>
- Y.D. Liu, J.G. Luhmann, P. Kajdič, E.K.J. Kilpua, N. Lugaz, N.V. Nitta, C. Möstl, B. Lavraud, S.D. Bale, C.J. Farrugia, A.B. Galvin, Observations of an extreme storm in interplanetary space caused by successive coronal mass ejections. *Nat. Commun.* **5**, 3481 (2014). <https://doi.org/10.1038/ncomms4481>. [arXiv:1405.6088](https://arxiv.org/abs/1405.6088)
- S.H.B. Livi, J. Wang, S.F. Martin, The cancellation of magnetic flux. I—on the quiet sun. *Aust. J. Phys.* **38**, 855–873 (1985). <https://doi.org/10.1071/PH850855>
- D.W. Longcope, B.T. Welsch, A model for the emergence of a twisted magnetic flux tube. *Astrophys. J.* **545**, 1089–1100 (2000). <https://doi.org/10.1086/317846>
- B.C. Low, Magnetohydrodynamic processes in the solar corona: flares, coronal mass ejections, and magnetic helicity. *Phys. Plasmas* **1**, 1684–1690 (1994). <https://doi.org/10.1063/1.870671>
- B.C. Low, Solar activity and the corona. *Sol. Phys.* **167**, 217–265 (1996). <https://doi.org/10.1007/BF00146338>
- B.C. Low, Coronal mass ejections, magnetic flux ropes, and solar magnetism. *J. Geophys. Res.* **106**, 25,141–25,164 (2001). <https://doi.org/10.1029/2000JA004015>
- B.C. Low, R.H. Munro, R.R. Fisher, The initiation of a coronal transient. *Astrophys. J.* **254**, 335–342 (1982). <https://doi.org/10.1086/159737>
- N. Lugaz, C. Downs, K. Shibata, I.I. Roussev, A. Asai, T.I. Gombosi, Numerical investigation of a coronal mass ejection from an anemone active region: reconnection and deflection of the 2005 August 22 eruption. *Astrophys. J.* **738**, 127 (2011). <https://doi.org/10.1088/0004-637X/738/2/127>. [arXiv:1106.5284](https://arxiv.org/abs/1106.5284)

- N. Lugaz, M. Temmer, Y. Wang, C.J. Farrugia, The Interaction of Successive Coronal Mass Ejections: A Review (2016). ArXiv e-prints. [arXiv:1612.02398](https://arxiv.org/abs/1612.02398)
- B.J. Lynch, J.K. Edmondson, Sympathetic magnetic breakout coronal mass ejections from pseudostreamers. *Astrophys. J.* **764**, 87 (2013). <https://doi.org/10.1088/0004-637X/764/1/87>. [arXiv:1212.6677](https://arxiv.org/abs/1212.6677)
- B.J. Lynch, S.K. Antiochos, P.J. MacNeice, T.H. Zurbuchen, L.A. Fisk, Observable properties of the breakout model for coronal mass ejections. *Astrophys. J.* **617**, 589–599 (2004). <https://doi.org/10.1086/424564>
- B.J. Lynch, S.K. Antiochos, C.R. DeVore, J.G. Luhmann, T.H. Zurbuchen, Topological evolution of a fast magnetic breakout CME in three dimensions. *Astrophys. J.* **683**, 1192–1206 (2008). <https://doi.org/10.1086/589738>
- B.J. Lynch, Y. Li, A.F.R. Thernisien, E. Robbrecht, G.H. Fisher, J.G. Luhmann, A. Vourlidas, Sun to 1 AU propagation and evolution of a slow streamer-blowout coronal mass ejection. *J. Geophys. Res. Space Phys.* **115**, A07106 (2010). <https://doi.org/10.1029/2009JA015099>
- S. Ma, G.D.R. Attrill, L. Golub, J. Lin, Statistical study of coronal mass ejections with and without distinct low coronal signatures. *Astrophys. J.* **722**, 289–301 (2010). <https://doi.org/10.1088/0004-637X/722/1/289>
- D.H. Mackay, A.A. van Ballegoijen, Models of the large-scale corona. I. Formation, evolution, and liftoff of magnetic flux ropes. *Astrophys. J.* **641**, 577–589 (2006). <https://doi.org/10.1086/500425>
- D.H. Mackay, L.M. Green, A. van Ballegoijen, Modeling the dispersal of an active region: quantifying energy input into the corona. *Astrophys. J.* **729**, 97 (2011). <https://doi.org/10.1088/0004-637X/729/2/97>. [arXiv:1102.5296](https://arxiv.org/abs/1102.5296)
- P. MacNeice, S.K. Antiochos, A. Phillips, D.S. Spicer, C.R. DeVore, K. Olson, A numerical study of the breakout model for coronal mass ejection initiation. *Astrophys. J.* **614**, 1028–1041 (2004). <https://doi.org/10.1086/423887>
- T. Magara, D.W. Longcope, Injection of magnetic energy and magnetic helicity into the solar atmosphere by an emerging magnetic flux tube. *Astrophys. J.* **586**, 630–649 (2003). <https://doi.org/10.1086/367611>
- W. Manchester, Buoyant disruption of magnetic arcades with self-induced shearing. *J. Geophys. Res. Space Phys.* **108**, 1162 (2003). <https://doi.org/10.1029/2002JA009252>
- W. Manchester, B.C. Low, Magnetostatic atmospheres possessing identical invariants of ideal magnetohydrodynamics. *Phys. Plasmas* **7**, 1263–1279 (2000). <https://doi.org/10.1063/1.873937>
- W. Manchester IV, The role of nonlinear Alfvén waves in shear formation during solar magnetic flux emergence. *Astrophys. J.* **547**, 503–519 (2001). <https://doi.org/10.1086/318342>
- W. Manchester IV, Solar atmospheric dynamic coupling due to shear motions driven by the Lorentz force. *Astrophys. J.* **666**, 532–540 (2007). <https://doi.org/10.1086/520493>
- W. Manchester IV, T. Gombosi, D. DeZeeuw, Y. Fan, Eruption of a buoyantly emerging magnetic flux rope. *Astrophys. J.* **610**, 588–596 (2004a). <https://doi.org/10.1086/421516>
- W.B. Manchester, T.I. Gombosi, I. Roussev, A. Ridley, D.L. de Zeeuw, I.V. Sokolov, K.G. Powell, G. Tóth, Modeling a space weather event from the Sun to the Earth: CME generation and interplanetary propagation. *J. Geophys. Res. Space Phys.* **109**, A02107 (2004b). <https://doi.org/10.1029/2003JA010150>
- C.H. Mandrini, S. Pohjolainen, S. Dasso, L.M. Green, P. Démoulin, L. van Driel-Gesztelyi, C. Copperwheat, C. Foley, Interplanetary flux rope ejected from an X-ray bright point. The smallest magnetic cloud source-region ever observed. *Astron. Astrophys.* **434**, 725–740 (2005). <https://doi.org/10.1051/0004-6361:20041079>
- D. Maričić, B. Vršnak, A.L. Stanger, A.M. Veronig, M. Temmer, D. Roša, Acceleration phase of coronal mass ejections: II. Synchronization of the energy release in the associated flare. *Sol. Phys.* **241**, 99–112 (2007). <https://doi.org/10.1007/s11207-007-0291-x>
- S.F. Martin, Preflare conditions, changes and events. *Sol. Phys.* **68**, 217–236 (1980). <https://doi.org/10.1007/BF00156861>
- S.F. Martin, S.H.B. Livi, J. Wang, The cancellation of magnetic flux. II—in a decaying active region. *Aust. J. Phys.* **38**, 929–959 (1985). <https://doi.org/10.1071/PH850929>
- J. Martínez-Sykora, V. Hansteen, B. DePontieu, M. Carlsson, Spicule-like structures observed in three-dimensional realistic magnetohydrodynamic simulations. *Astrophys. J.* **701**, 1569–1581 (2009). <https://doi.org/10.1088/0004-637X/701/2/1569>. [arXiv:0906.4446](https://arxiv.org/abs/0906.4446)
- S. Masson, S.K. Antiochos, C.R. DeVore, A model for the escape of solar-flare-accelerated particles. *Astrophys. J.* **771**, 82 (2013). <https://doi.org/10.1088/0004-637X/771/2/82>. [arXiv:1301.0654](https://arxiv.org/abs/1301.0654)
- R. Matsumoto, T. Tajima, K. Shibata, M. Kaisig, Three-dimensional magnetohydrodynamics of the emerging magnetic flux in the solar atmosphere. *Astrophys. J.* **414**, 357–371 (1993). <https://doi.org/10.1086/173082>
- R.T.J. McAteer, P.T. Gallagher, P.A. Conlon, Turbulence, complexity, and solar flares. *Adv. Space Res.* **45**, 1067–1074 (2010). <https://doi.org/10.1016/j.asr.2009.08.026>. [arXiv:0909.5636](https://arxiv.org/abs/0909.5636)
- D.E. McKenzie, Signatures of reconnection in eruptive flares [Invited], in *Multi-Wavelength Observations of Coronal Structure and Dynamics*, ed. by P.C.H. Martens, D. Cauffman (2002), p. 155

- M. Messerotti, F. Zuccarello, S.L. Guglielmino, V. Bothmer, J. Liliensten, G. Noci, M. Storini, H. Lundstedt, Solar weather event modelling and prediction. *Space Sci. Rev.* **147**, 121–185 (2009). <https://doi.org/10.1007/s11214-009-9574-x>
- Z. Mikić, M.A. Lee, An introduction to theory and models of CMEs, shocks, and solar energetic particles. *Space Sci. Rev.* **123**, 57–80 (2006). <https://doi.org/10.1007/s11214-006-9012-2>
- Z. Mikić, J.A. Linker, Disruption of coronal magnetic field arcades. *Astrophys. J.* **430**, 898–912 (1994). <https://doi.org/10.1086/174460>
- Z. Mikić, D.C. Barnes, D.D. Schnack, Dynamical evolution of a solar coronal magnetic field arcade. *Astrophys. J.* **328**, 830–847 (1988). <https://doi.org/10.1086/166341>
- Z. Mikić, T. Török, V.S. Titov, J.A. Linker, R. Lionello, P. Riley, *MHD Modeling of the Sympathetic Eruptions Observed on August 1, 2010. AGU Fall Meeting Abstracts* (2011)
- Z. Mikić, T. Török, V. Titov, J.A. Linker, R. Lionello, C. Downs, P. Riley, The challenge in making models of fast CMEs, in *American Institute of Physics Conference Series*, ed. by G.P. Zank, J. Borovsky, R. Bruno, J. Cirtain, S. Cranmer, H. Elliott, J. Giacalone, W. Gonzalez, G. Li, E. Marsch, E. Moebius, N. Pogorelov, J. Spann, O. Verkhoglyadova. American Institute of Physics Conference Series, vol. 1539 (2013), pp. 42–45. <https://doi.org/10.1063/1.4810985>
- C.H. Miklenic, A.M. Veronig, B. Vršnak, A. Hanslmeier, Reconnection and energy release rates in a two-ribbon flare. *Astron. Astrophys.* **461**, 697–706 (2007). <https://doi.org/10.1051/0004-6361/20065751>
- C.H. Miklenic, A.M. Veronig, B. Vršnak, Temporal comparison of nonthermal flare emission and magnetic-flux change rates. *Astron. Astrophys.* **499**, 893–904 (2009). <https://doi.org/10.1051/0004-6361/200810947>. [arXiv:0910.1701](https://arxiv.org/abs/0910.1701)
- Y. Moon, G.S. Choe, Y.D. Park, H. Wang, P.T. Gallagher, J. Chae, H.S. Yun, P.R. Goode, Statistical evidence for sympathetic flares. *Astrophys. J.* **574**, 434–439 (2002). <https://doi.org/10.1086/340945>
- Y. Moon, G.S. Choe, H. Wang, Y.D. Park, Sympathetic coronal mass ejections. *Astrophys. J.* **588**, 1176–1182 (2003). <https://doi.org/10.1086/374270>
- R.L. Moore, G. Roumeliotis, Triggering of eruptive flares—destabilization of the preflare magnetic field configuration, in *IAU Colloq. 133: Eruptive Solar Flares*, ed. by Z. Svestka, B.V. Jackson, M.E. Machado. Lecture Notes in Physics, vol. 399 (Springer, Berlin, 1992), p. 69. https://doi.org/10.1007/3-540-55246-4_79
- R.L. Moore, A.C. Sterling, *Initiation of Coronal Mass Ejections*. Geophysical Monograph Series, vol. 165 (American Geophysical Union, Washington, 2006), p. 43. <https://doi.org/10.1029/165GM07>
- R.L. Moore, A.C. Sterling, H.S. Hudson, J.R. Lemen, Onset of the magnetic explosion in solar flares and coronal mass ejections. *Astrophys. J.* **552**, 833–848 (2001). <https://doi.org/10.1086/320559>
- R.L. Moore, D.A. Falconer, A.C. Sterling, The limit of magnetic-shear energy in solar active regions. *Astrophys. J.* **750**, 24 (2012). <https://doi.org/10.1088/0004-637X/750/1/24>
- C. Möstl, K. Amla, J.R. Hall, P.C. Liewer, E.M. De Jong, R.C. Colaninno, A.M. Veronig, T. Rollett, M. Temmer, V. Peinhardt, J.A. Davies, N. Lugaz, Y.D. Liu, C.J. Farrugia, J.G. Luhmann, B. Vršnak, R.A. Harrison, A.B. Galvin, Connecting speeds, directions and arrival times of 22 coronal mass ejections from the Sun to 1 AU. *Astrophys. J.* **787**, 119 (2014). <https://doi.org/10.1088/0004-637X/787/2/119>. [arXiv:1404.3579](https://arxiv.org/abs/1404.3579)
- T.C. Mouschovias, A.I. Poland, Expansion and broadening of coronal loop transients—a theoretical explanation. *Astrophys. J.* **220**, 675–682 (1978). <https://doi.org/10.1086/155951>
- T. Mrozek, TRACE and RHESSI observations of a failed eruption of a magnetic flux rope and oscillating coronal loops. *Cent. Eur. Astrophys. Bull.* **32**, 85–92 (2008)
- D.J. Mullan, Sympathetic stellar flares and electron precipitation as probes of coronal structure in flare stars. *Astrophys. J.* **204**, 530–538 (1976). <https://doi.org/10.1086/154199>
- R.H. Munro, J.T. Gosling, E. Hildner, R.M. MacQueen, A.I. Poland, C.L. Ross, The association of coronal mass ejection transients with other forms of solar activity. *Sol. Phys.* **61**, 201–215 (1979). <https://doi.org/10.1007/BF00155456>
- N.J. Nelson, B.P. Brown, A. Sacha Brun, M.S. Miesch, J. Toomre, Buoyant magnetic loops generated by global convective dynamo action. *Sol. Phys.* **289**, 441–458 (2014). <https://doi.org/10.1007/s11207-012-0221-4>. [arXiv:1212.5612](https://arxiv.org/abs/1212.5612)
- W.M. Neupert, B.J. Thompson, J.B. Gurman, S.P. Plunkett, Eruption and acceleration of flare-associated coronal mass ejection loops in the low corona. *J. Geophys. Res.* **106**, 25,215–25,226 (2001). <https://doi.org/10.1029/2000JA004012>
- A. Nindos, M.D. Andrews, The association of big flares and coronal mass ejections: what is the role of magnetic helicity? *Astrophys. J. Lett.* **616**, L175–L178 (2004). <https://doi.org/10.1086/426861>
- A. Nindos, H. Zhang, Photospheric motions and coronal mass ejection productivity. *Astrophys. J. Lett.* **573**, L133–L136 (2002). <https://doi.org/10.1086/341937>
- Å. Nordlund, R.F. Stein, M. Asplund, Solar surface convection. *Living Rev. Sol. Phys.* **6**, 2 (2009). <https://doi.org/10.12942/lrsp-2009-2>

- S. Notoya, T. Yokoyama, K. Kusano, T. Sakurai, T. Miyagoshi, H. Isobe, T. Yamamoto, Three-dimensional filament eruption driven by an emerging flux, in *New Solar Physics with Solar-B Mission*, ed. by K. Shibata, S. Nagata, T. Sakurai. Astronomical Society of the Pacific Conference Series, vol. 369 (2007), p. 381
- D. Odstrcil, Modeling 3-D solar wind structure. *Adv. Space Res.* **32**, 497–506 (2003). [https://doi.org/10.1016/S0273-1177\(03\)00332-6](https://doi.org/10.1016/S0273-1177(03)00332-6)
- D. Odstrcil, V.J. Pizzo, C.N. Arge, Propagation of the 12 May 1997 interplanetary coronal mass ejection in evolving solar wind structures. *J. Geophys. Res. Space Phys.* **110**, A02106 (2005). <https://doi.org/10.1029/2004JA010745>
- O. Olmedo, J. Zhang, Partial torus instability. *Astrophys. J.* **718**, 433–440 (2010). <https://doi.org/10.1088/0004-637X/718/1/433>
- P. Pagano, D.H. Mackay, S. Poedts, Magnetohydrodynamic simulations of the ejection of a magnetic flux rope. *Astron. Astrophys.* **554**, A77 (2013). <https://doi.org/10.1051/0004-6361/201220947>
- E. Palmerio, E.K.J. Kilpua, A.W. James, L.M. Green, J. Pomoell, A. Isavnin, G. Valori, Determining the intrinsic CME flux rope type using remote-sensing solar disk observations. *Sol. Phys.* **292**, 39 (2017). <https://doi.org/10.1007/s11207-017-1063-x>. [arXiv:1701.08595](https://arxiv.org/abs/1701.08595)
- O. Panasenco, M.M. Velli, Magnetic Structure of Twin Filaments Inside Pseudostreamers, AGU, Fall Meeting, Abstracts (2010), p. A1663
- N.K. Panesar, A.C. Sterling, D.E. Innes, R.L. Moore, Destabilization of a solar prominence/filament field system by a series of eight homologous eruptive flares leading to a CME. *Astrophys. J.* **811**, 5 (2015). <https://doi.org/10.1088/0004-637X/811/1/5>. [arXiv:1508.01952](https://arxiv.org/abs/1508.01952)
- E. Pariat, J.E. Leake, G. Valori, M.G. Linton, F.P. Zuccarello, K. Dalmasse, Relative magnetic helicity as a diagnostic of solar eruptivity. *Astron. Astrophys.* **601**, A125 (2017). <https://doi.org/10.1051/0004-6361/201630043>. [arXiv:1703.10562](https://arxiv.org/abs/1703.10562)
- S. Patsourakos, A. Vourlidis, G. Stenborg, Direct evidence for a fast coronal mass ejection driven by the prior formation and subsequent destabilization of a magnetic flux rope. *Astrophys. J.* **764**, 125 (2013). <https://doi.org/10.1088/0004-637X/764/2/125>. [arXiv:1211.7211](https://arxiv.org/abs/1211.7211)
- G. Pearce, R.A. Harrison, Sympathetic flaring. *Astron. Astrophys.* **228**, 513–516 (1990)
- Z. Peng, Y. Hu, Interaction between adjacent sheared magnetic arcades in the solar corona. *Astrophys. J.* **668**, 513–519 (2007). <https://doi.org/10.1086/520806>
- A.A. Pevtsov, R.C. Canfield, H. Zirin, Reconnection and helicity in a solar flare. *Astrophys. J.* **473**, 533 (1996). <https://doi.org/10.1086/178164>
- G.W. Pneuman, The physical structure of coronal holes—influence of magnetic fields and coronal heating. *Astron. Astrophys.* **81**, 161–166 (1980)
- E.R. Priest, T.G. Forbes, Magnetic field evolution during prominence eruptions and two-ribbon flares. *Sol. Phys.* **126**, 319–350 (1990). <https://doi.org/10.1007/BF00153054>
- E.R. Priest, T.G. Forbes, Magnetic flipping—reconnection in three dimensions without null points. *J. Geophys. Res.* **97**, 1521–1531 (1992). <https://doi.org/10.1029/91JA02435>
- E.R. Priest, T.G. Forbes, The magnetic nature of solar flares. *Astron. Astrophys. Rev.* **10**, 313–377 (2002). <https://doi.org/10.1007/s001590100013>
- R. Qahwaji, T. Colak, M. Al-Omari, S. Ipson, Automated prediction of CMEs using machine learning of CME—flare associations. *Sol. Phys.* **248**, 471–483 (2008). <https://doi.org/10.1007/s11207-007-9108-1>
- J. Qiu, V.B. Yurchyshyn, Magnetic reconnection flux and coronal mass ejection velocity. *Astrophys. J. Lett.* **634**, L121–L124 (2005). <https://doi.org/10.1086/498716>
- J. Qiu, H. Wang, C.Z. Cheng, D.E. Gary, Magnetic reconnection and mass acceleration in flare-coronal mass ejection events. *Astrophys. J.* **604**, 900–905 (2004). <https://doi.org/10.1086/382122>
- J. Qiu, Q. Hu, T.A. Howard, V.B. Yurchyshyn, On the magnetic flux budget in low-corona magnetic reconnection and interplanetary coronal mass ejections. *Astrophys. J.* **659**, 758–772 (2007). <https://doi.org/10.1086/512060>
- L.A. Rachmeler, C.E. DeForest, C.C. Kankelborg, Reconnectionless CME eruption: putting the Aly–Sturrock conjecture to rest. *Astrophys. J.* **693**, 1431–1436 (2009). <https://doi.org/10.1088/0004-637X/693/2/1431>. [arXiv:0812.3199](https://arxiv.org/abs/0812.3199)
- H.E. Ramsey, S.F. Smith, Flare-initiated filaments oscillations. *Astron. J.* **71**, 197 (1966)
- D.V. Reames, The two sources of solar energetic particles. *Space Sci. Rev.* **175**, 53–92 (2013). <https://doi.org/10.1007/s11214-013-9958-9>. [arXiv:1306.3608](https://arxiv.org/abs/1306.3608)
- K.K. Reeves, L. Golub, Atmospheric imaging assembly observations of hot flare plasma. *Astrophys. J. Lett.* **727**, L52 (2011). <https://doi.org/10.1088/2041-8205/727/2/L52>
- K.K. Reeves, J.A. Linker, Z. Mikić, T.G. Forbes, Current sheet energetics, flare emissions, and energy partition in a simulated solar eruption. *Astrophys. J.* **721**, 1547–1558 (2010). <https://doi.org/10.1088/0004-637X/721/2/1547>

- M. Rempel, Numerical simulations of quiet sun magnetism: on the contribution from a small-scale dynamo. *Astrophys. J.* **789**, 132 (2014). <https://doi.org/10.1088/0004-637X/789/2/132>. arXiv:1405.6814
- M. Rempel, M.C.M. Cheung, Numerical simulations of active region scale flux emergence: from spot formation to decay. *Astrophys. J.* **785**, 90 (2014). <https://doi.org/10.1088/0004-637X/785/2/90>. arXiv:1402.4703
- M. Rempel, M. Schüssler, M. Knölker, Radiative magnetohydrodynamic simulation of sunspot structure. *Astrophys. J.* **691**, 640–649 (2009). <https://doi.org/10.1088/0004-637X/691/1/640>. arXiv:0808.3294
- R.S. Richardson, *Annu. Rep. Dir. Mt. Wilson Obs.* **114**, 871 (1936)
- E. Robbrecht, S. Patsourakos, A. Vourlidas, No trace left behind: STEREO observation of a coronal mass ejection without low coronal signatures. *Astrophys. J.* **701**, 283–291 (2009). <https://doi.org/10.1088/0004-637X/701/1/283>. arXiv:0905.2583
- I. Roussev, Eruptive events in the solar atmosphere: new insights from theory and 3-D numerical modelling. *Contemp. Phys.* **49**, 237–254 (2008). <https://doi.org/10.1080/00107510802366658>
- I.I. Roussev, T.G. Forbes, T.I. Gombosi, I.V. Sokolov, D.L. DeZeeuw, J. Birn, A three-dimensional flux rope model for coronal mass ejections based on a loss of equilibrium. *Astrophys. J. Lett.* **588**, L45–L48 (2003). <https://doi.org/10.1086/375442>
- I.I. Roussev, I.V. Sokolov, T.G. Forbes, T.I. Gombosi, M.A. Lee, J.I. Sakai, A numerical model of a coronal mass ejection: shock development with implications for the acceleration of GeV protons. *Astrophys. J. Lett.* **605**, L73–L76 (2004). <https://doi.org/10.1086/392504>
- I.I. Roussev, N. Lugaz, I.V. Sokolov, New physical insight on the changes in magnetic topology during coronal mass ejections: case studies for the 2002 April 21 and August 24 events. *Astrophys. J. Lett.* **668**, L87–L90 (2007). <https://doi.org/10.1086/522588>
- I.I. Roussev, K. Galsgaard, C. Downs, N. Lugaz, I.V. Sokolov, E. Moise, J. Lin, Explaining fast ejections of plasma and exotic X-ray emission from the solar corona. *Nat. Phys.* **8**, 845–849 (2012). <https://doi.org/10.1038/nphys2427>
- D.M. Rust, The helical flux rope structure of solar filaments. *Adv. Space Res.* **32**, 1895–1903 (2003). [https://doi.org/10.1016/S0273-1177\(03\)90623-5](https://doi.org/10.1016/S0273-1177(03)90623-5)
- D.M. Rust, E. Hildner, Expansion of an X-ray coronal arch into the outer corona. *Sol. Phys.* **48**, 381–387 (1976). <https://doi.org/10.1007/BF00152003>
- T. Sakurai, Magnetohydrodynamic interpretation of the motion of prominences. *Publ. Astron. Soc. Jpn.* **28**, 177–198 (1976)
- I. Sammis, F. Tang, H. Zirin, The dependence of large flare occurrence on the magnetic structure of sunspots. *Astrophys. J.* **540**, 583–587 (2000). <https://doi.org/10.1086/309303>
- A. Savcheva, A. van Ballegoijen, Nonlinear force-free modeling of a long-lasting coronal sigmoid. *Astrophys. J.* **703**, 1766–1777 (2009). <https://doi.org/10.1088/0004-637X/703/2/1766>
- A.S. Savcheva, Photospheric flux cancellation and the build-up of sigmoidal flux ropes on the Sun. *Astrophys. J.* **759**, 105 (2012). <https://doi.org/10.1088/0004-637X/759/2/105>
- B. Schmieder, P. Démoulin, G. Aulanier, Solar filament eruptions and their physical role in triggering coronal mass ejections. *Adv. Space Res.* **51**, 1967–1980 (2013). <https://doi.org/10.1016/j.asr.2012.12.026>. arXiv:1212.4014
- B. Schmieder, G. Aulanier, B. Vršnak, Flare-CME models: an observational perspective (invited review). *Sol. Phys.* (2015). <https://doi.org/10.1007/s11207-015-0712-1>
- C.J. Schrijver, A characteristic magnetic field pattern associated with all major solar flares and its use in flare forecasting. *Astrophys. J. Lett.* **655**, L117–L120 (2007). <https://doi.org/10.1086/511857>
- C.J. Schrijver, Driving major solar flares and eruptions: a review. *Adv. Space Res.* **43**, 739–755 (2009). <https://doi.org/10.1016/j.asr.2008.11.004>. arXiv:0811.0787
- C.J. Schrijver, P.A. Higgins, A statistical study of distant consequences of large solar energetic events. *Sol. Phys.* **290**, 2943–2950 (2015). <https://doi.org/10.1007/s11207-015-0785-x>. arXiv:1509.05680
- C.J. Schrijver, A.M. Title, Long-range magnetic couplings between solar flares and coronal mass ejections observed by SDO and STEREO. *J. Geophys. Res. Space Phys.* **A04**, 108 (2011). <https://doi.org/10.1029/2010JA016224>
- C.J. Schrijver, M.L. DeRosa, T. Metcalf, G. Barnes, B. Lites, T. Tarbell, J. McTiernan, G. Valori, T. Wiegelmann, M.S. Wheatland, T. Amari, G. Aulanier, P. Démoulin, M. Fuhrmann, K. Kusano, S. Régnier, J.K. Thalmann, Nonlinear force-free field modeling of a solar active region around the time of a major flare and coronal mass ejection. *Astrophys. J.* **675**, 1637–1644 (2008a). <https://doi.org/10.1086/527413>. arXiv:0712.0023
- C.J. Schrijver, C. Elmore, B. Kliem, T. Török, A.M. Title, Observations and modeling of the early acceleration phase of erupting filaments involved in coronal mass ejections. *Astrophys. J.* **674**, 586–595 (2008b). <https://doi.org/10.1086/524294>. arXiv:0710.1609

- C.J. Schrijver, A.M. Title, A.R. Yeates, M.L. DeRosa, Pathways of large-scale magnetic couplings between solar coronal events. *Astrophys. J.* **773**, 93 (2013). <https://doi.org/10.1088/0004-637X/773/2/93>. [arXiv:1305.0801](https://arxiv.org/abs/1305.0801)
- R. Schwenn, A. dal Lago, E. Huttunen, W.D. Gonzalez, The association of coronal mass ejections with their effects near the Earth. *Ann. Geophys.* **23**, 1033–1059 (2005). <https://doi.org/10.5194/angeo-23-1033-2005>
- D.B. Seaton, M. Mierla, D. Berghmans, A.N. Zhukov, L. Dolla, SWAP-SECCHI observations of a mass-loading type solar eruption. *Astrophys. J. Lett.* **727**, L10 (2011). <https://doi.org/10.1088/2041-8205/727/1/L10>. [arXiv:1011.1144](https://arxiv.org/abs/1011.1144)
- V.D. Shafranov, Plasma equilibrium in a magnetic field. *Rev. Plasma Phys.* **2**, 103 (1966)
- A. Shanmugaraju, Y.J. Moon, M. Dryer, S. Umapathy, On the kinematic evolution of flare-associated CMEs. *Sol. Phys.* **215**, 185–201 (2003)
- C. Shen, G. Li, X. Kong, J. Hu, X.D. Sun, L. Ding, Y. Chen, Y. Wang, L. Xia, Compound twin coronal mass ejections in the 2012 May 17 GLE event. *Astrophys. J.* **763**, 114 (2013). <https://doi.org/10.1088/0004-637X/763/2/114>
- Y. Shen, Y. Liu, J. Su, Sympathetic partial and full filament eruptions observed in one solar breakout event. *Astrophys. J.* **750**, 12 (2012). <https://doi.org/10.1088/0004-637X/750/1/12>. [arXiv:1202.4867](https://arxiv.org/abs/1202.4867)
- K. Shibata, T. Tajima, R.S. Steinolfson, R. Matsumoto, Two-dimensional magnetohydrodynamic model of emerging magnetic flux in the solar atmosphere. *Astrophys. J.* **345**, 584–596 (1989). <https://doi.org/10.1086/167932>
- K. Shibata, S. Masuda, M. Shimojo, H. Hara, T. Yokoyama, S. Tsuneta, T. Kosugi, Y. Ogawara, Hot-plasma ejections associated with compact-loop solar flares. *Astrophys. J. Lett.* **451**, L83 (1995). <https://doi.org/10.1086/309688>
- D. Shiota, H. Isobe, P.F. Chen, T.T. Yamamoto, T. Sakajiri, K. Shibata, Self-consistent magnetohydrodynamic modeling of a coronal mass ejection, coronal dimming, and a giant cusp-shaped arcade formation. *Astrophys. J.* **634**, 663–678 (2005). <https://doi.org/10.1086/496943>. [arXiv:astro-ph/0508478](https://arxiv.org/abs/astro-ph/0508478)
- D. Shiota, K. Kusano, T. Miyoshi, N. Nishikawa, K. Shibata, A quantitative MHD study of the relation among arcade shearing, flux rope formation, and eruption due to the tearing instability. *J. Geophys. Res. Space Phys.* **113**, A03S05 (2008). <https://doi.org/10.1029/2007JA012516>
- G.M. Simnett, H.S. Hudson, The evolution of a rapidly-expanding active region loop into a trans-equatorial coronal mass ejection, in *Correlated Phenomena at the Sun, in the Heliosphere and in Geospace*, ed. by A. Wilson. ESA Special Publication, vol. 415 (1997), p. 437
- G. Siscoe, R. Schwenn, CME disturbance forecasting. *Space Sci. Rev.* **123**, 453–470 (2006). <https://doi.org/10.1007/s11214-006-9024-y>
- G. Siscoe, N.U. Crooker, C.R. Clauer, Dst of the Carrington storm of 1859. *Adv. Space Res.* **38**, 173–179 (2006). <https://doi.org/10.1016/j.asr.2005.02.102>
- A. Smyrli, F. Zuccarello, P. Romano, F.P. Zuccarello, S.L. Guglielmino, D. Spadaro, A.W. Hood, D. Mackay, Trend of photospheric magnetic helicity flux in active regions generating halo coronal mass ejections. *Astron. Astrophys.* **521**, A56 (2010). <https://doi.org/10.1051/0004-6361/200913275>
- H.C. Spruit, A.A. van Ballegooijen, Stability of toroidal flux tubes in stars. *Astron. Astrophys.* **106**, 58–66 (1982)
- C.D.C. Steele, E.R. Priest, The eruption of a prominence and coronal mass ejection which drive reconnection. *Sol. Phys.* **119**, 157–195 (1989). <https://doi.org/10.1007/BF00146219>
- R.F. Stein, Å. Nordlund, Solar small-scale magnetoconvection. *Astrophys. J.* **642**, 1246–1255 (2006). <https://doi.org/10.1086/501445>
- R.S. Steinolfson, Coronal evolution due to shear motion. *Astrophys. J.* **382**, 677–687 (1991). <https://doi.org/10.1086/170755>
- A.C. Sterling, H.S. Hudson, Yohkoh SXT observations of X-ray “dimming” associated with a halo coronal mass ejection. *Astrophys. J. Lett.* **491**, L55–L58 (1997). <https://doi.org/10.1086/311043>
- A.C. Sterling, L.K. Harra, R.L. Moore, New evidence for the role of emerging flux in a solar filament’s slow rise preceding its CME-producing fast eruption. *Astrophys. J.* **669**, 1359–1371 (2007a). <https://doi.org/10.1086/520829>
- A.C. Sterling, R.L. Moore, T.E. Berger, M. Bobra, J.M. Davis, P. Jibben, R. Kano, L.L. Lundquist, D. Myers, N. Narukage, T. Sakao, K. Shibasaki, R.A. Shine, T.D. Tarbell, M. Weber, Hinode observations of the onset stage of a solar filament eruption. *Publ. Astron. Soc. Jpn.* **59**, 823 (2007b). <https://doi.org/10.1093/pasj/59.sp3.S823>
- L.H. Strous, G. Scharmer, T.D. Tarbell, A.M. Title, C. Zwaan, Phenomena in an emerging active region. I. Horizontal dynamics. *Astron. Astrophys.* **306**, 947 (1996)
- P.A. Sturrock, Model of the high-energy phase of solar flares. *Nature* **211**, 695–697 (1966). <https://doi.org/10.1038/211695a0>

- P.A. Sturrock, Maximum energy of semi-infinite magnetic field configurations. *Astrophys. J.* **380**, 655–659 (1991). <https://doi.org/10.1086/170620>
- J. Su, Y. Liu, J. Liu, X. Mao, H. Zhang, H. Li, X. Wang, W. Xie, Lorentz force: a possible driving force for sunspot rotation. *Sol. Phys.* **252**, 55–71 (2008). <https://doi.org/10.1007/s11207-008-9236-2>
- Y. Su, A. van Ballegoijen, B.W. Lites, E.E. Deluca, L. Golub, P.C. Grigis, G. Huang, H. Ji, Observations and nonlinear force-free field modeling of active region 10953. *Astrophys. J.* **691**, 105–114 (2009). <https://doi.org/10.1088/0004-637X/691/1/105>
- X. Sun, J.T. Hoeksema, Y. Liu, T. Wiegelmann, K. Hayashi, Q. Chen, J. Thalmann, Evolution of magnetic field and energy in a major eruptive active region based on SDO/HMI observation. *Astrophys. J.* **748**, 77 (2012). <https://doi.org/10.1088/0004-637X/748/2/77>. arXiv:1201.3404
- X. Sun, M.G. Bobra, J.T. Hoeksema, Y. Liu, Y. Li, C. Shen, S. Couvidat, A.A. Norton, G.H. Fisher, Why is the great solar active region 12192 flare-rich but CME-poor? *Astrophys. J. Lett.* **804**, L28 (2015). <https://doi.org/10.1088/2041-8205/804/2/L28>. arXiv:1502.06950
- M. Temmer, N.V. Nitta, Interplanetary propagation behavior of the fast coronal mass ejection on 23 July 2012. *Sol. Phys.* **290**, 919–932 (2015). <https://doi.org/10.1007/s11207-014-0642-3>. arXiv:1411.6559
- M. Temmer, A.M. Veronig, B. Vršnak, J. Rybák et al., Acceleration in fast halo CMEs and synchronized flare HXR bursts. *Astrophys. J.* **673**, L95–L98 (2008). <https://doi.org/10.1086/527414>
- M. Temmer, A.M. Veronig, E.P. Kontar, S. Krucker, B. Vršnak, Combined STEREO/RHESSI study of coronal mass ejection acceleration and particle acceleration in solar flares. *Astrophys. J.* **712**, 1410–1420 (2010). <https://doi.org/10.1088/0004-637X/712/2/1410>. arXiv:1002.3080
- M. Temmer, M.A. Reiss, L. Nikolic, S.J. Hofmeister, A.M. Veronig, Preconditioning of interplanetary space due to transient CME disturbances. *Astrophys. J.* **835**, 141 (2017). <https://doi.org/10.3847/1538-4357/835/2/141>. arXiv:1612.06080
- J.K. Thalmann, Y. Su, M. Temmer, A.M. Veronig, The confined X-class flares of solar active region 2192. *Astrophys. J. Lett.* **801**, L23 (2015). <https://doi.org/10.1088/2041-8205/801/2/L23>. arXiv:1502.05157
- V.S. Titov, P. Démoulin, Basic topology of twisted magnetic configurations in solar flares. *Astron. Astrophys.* **351**, 707–720 (1999)
- V.S. Titov, Z. Mikic, J.A. Linker, R. Lionello, 1997 May 12 coronal mass ejection event. I. A simplified model of the preruptive magnetic structure. *Astrophys. J.* **675**, 1614–1628 (2008). <https://doi.org/10.1086/527280>. arXiv:0711.3801
- V.S. Titov, Z. Mikic, T. Török, J.A. Linker, O. Panasenco, 2010 August 1–2 sympathetic eruptions. I. Magnetic topology of the source-surface background field. *Astrophys. J.* **759**, 70 (2012). <https://doi.org/10.1088/0004-637X/759/1/70>. arXiv:1209.5797
- M. Tokman, P.M. Bellan, Three-dimensional model of the structure and evolution of coronal mass ejections. *Astrophys. J.* **567**, 1202–1210 (2002). <https://doi.org/10.1086/338699>
- T. Török, B. Kliem, The evolution of twisting coronal magnetic flux tubes. *Astron. Astrophys.* **406**, 1043–1059 (2003). <https://doi.org/10.1051/0004-6361:20030692>
- T. Török, B. Kliem, Confined and ejective eruptions of kink-unstable flux ropes. *Astrophys. J. Lett.* **630**, L97–L100 (2005). <https://doi.org/10.1086/462412>. arXiv:astro-ph/0507662
- T. Török, B. Kliem, Numerical simulations of fast and slow coronal mass ejections. *Astron. Nachr.* **328**, 743 (2007). <https://doi.org/10.1002/asna.200710795>. arXiv:0705.2100
- T. Török, B. Kliem, V.S. Titov, Ideal kink instability of a magnetic loop equilibrium. *Astron. Astrophys.* **413**, L27–L30 (2004). <https://doi.org/10.1051/0004-6361:20031691>. arXiv:astro-ph/0311198
- T. Török, M.A. Berger, B. Kliem, The writhe of helical structures in the solar corona. *Astron. Astrophys.* **516**, A49 (2010). <https://doi.org/10.1051/0004-6361/200913578>. arXiv:1004.3918
- T. Török, O. Panasenco, V.S. Titov, Z. Mikić, K.K. Reeves, M. Velli, J.A. Linker, G. De Toma, A model for magnetically coupled sympathetic eruptions. *Astrophys. J. Lett.* **739**, L63 (2011). <https://doi.org/10.1088/2041-8205/739/2/L63>. arXiv:1108.2069
- T. Török, M. Temmer, G. Valori, A.M. Veronig, L. van Driel-Gesztelyi, B. Vršnak, Initiation of coronal mass ejections by sunspot rotation. *Sol. Phys.* **286**, 453–477 (2013). <https://doi.org/10.1007/s11207-013-0269-9>. arXiv:1401.2922
- T. Török, J.E. Leake, V.S. Titov, V. Archontis, Z. Mikić, M.G. Linton, K. Dalmasse, G. Aulanier, B. Kliem, Distribution of electric currents in solar active regions. *Astrophys. J. Lett.* **782**, L10 (2014). <https://doi.org/10.1088/2041-8205/782/1/L10>. arXiv:1401.2931
- G. Tóth, D.L. de Zeeuw, T.I. Gombosi, W.B. Manchester, A.J. Ridley, I.V. Sokolov, I.I. Roussev, Sun-to-thermosphere simulation of the 28–30 October 2003 storm with the space weather modeling framework. *Space Weather* **5**, S06003 (2007). <https://doi.org/10.1029/2006SW000272>
- B.T. Tsurutani, W.D. Gonzalez, G.S. Lakhina, S. Alex, The extreme magnetic storm of 1–2 September 1859. *J. Geophys. Res. Space Phys.* **108**, 1268 (2003). <https://doi.org/10.1029/2002JA009504>
- A.A. van Ballegoijen, Observations and modeling of a filament on the Sun. *Astrophys. J.* **612**, 519–529 (2004). <https://doi.org/10.1086/422512>

- A.A. van Ballegooijen, P.C.H. Martens, Formation and eruption of solar prominences. *Astrophys. J.* **343**, 971–984 (1989). <https://doi.org/10.1086/167766>
- B. van der Holst, C. Jacobs, S. Poedts, Simulation of a breakout coronal mass ejection in the solar wind. *Astrophys. J. Lett.* **671**, L77–L80 (2007). <https://doi.org/10.1086/524732>
- B. van der Holst, W. Manchester IV, I.V. Sokolov, G. Tóth, T.I. Gombosi, D. DeZeeuw, O. Cohen, Break-out coronal mass ejection or streamer blowout: the bugle effect. *Astrophys. J.* **693**, 1178 (2009). <https://doi.org/10.1088/0004-637X/693/2/1178>
- W. van Tend, M. Kuperus, The development of coronal electric current systems in active regions and their relation to filaments and flares. *Sol. Phys.* **59**, 115–127 (1978)
- S. Vennerstrom, L. Lefevre, M. Dumbović, N. Crosby, O. Malandraki, I. Patsou, F. Clette, A. Veronig, B. Vršnak, K. Leer, T. Moretto, Extreme geomagnetic storms—1868–2010. *Sol. Phys.* **291**, 1447–1481 (2016). <https://doi.org/10.1007/s11207-016-0897-y>
- A.M. Veronig, M. Karlický, B. Vršnak, M. Temmer, J. Magdalenic, B.R. Dennis, W. Otruba, W. Pötzi, X-ray sources and magnetic reconnection in the X3.9 flare of 2003 November 3. *Astron. Astrophys.* **446**, 675–690 (2006). <https://doi.org/10.1051/0004-6361:20053112>
- A. Vourlidas, R.A. Howard, E. Esfandiari, S. Patsourakos, S. Yashiro, G. Michalek, Comprehensive analysis of coronal mass ejection mass and energy properties over a full solar cycle. *Astrophys. J.* **722**, 1522–1538 (2010). <https://doi.org/10.1088/0004-637X/722/2/1522>. [arXiv:1008.3737](https://arxiv.org/abs/1008.3737)
- B. Vršnak, Dynamics of solar coronal eruptions. *J. Geophys. Res.* **106**, 25,249–25,260 (2001). <https://doi.org/10.1029/2000JA004007>
- B. Vršnak, The oscillating loop prominence of July 17, 1981. *Sol. Phys.* **94**, 289–297 (1984)
- B. Vršnak, Eruptive instability of cylindrical prominences. *Sol. Phys.* **129**, 295–312 (1990)
- B. Vršnak, Dynamics of solar coronal eruptions. *J. Geophys. Res.* **106**, 25,249–25,260 (2001). <https://doi.org/10.1029/2000JA004007>
- B. Vršnak, Forces governing coronal mass ejections. *Adv. Space Res.* **38**, 431–440 (2006). <https://doi.org/10.1016/j.asr.2005.03.090>
- B. Vršnak, Processes and mechanisms governing the initiation and propagation of CMEs. *Ann. Geophys.* **26**, 3089–3101 (2008)
- B. Vršnak, Solar eruptions: the CME-flare relationship. *Astron. Nachr.* **337**, 21 (2016). <https://doi.org/10.1002/asna.201612424>
- B. Vršnak, V. Ruždjak, R. Brajša, F. Zloch, Oscillatory motions in an active prominence. *Sol. Phys.* **127**, 119–128 (1990)
- B. Vršnak, V. Ruždjak, B. Rimpolt, Stability of prominences exposing helical-like patterns. *Sol. Phys.* **136**, 151–167 (1991)
- B. Vršnak, J. Magdalenic, H. Aurass, G. Mann, Band-splitting of coronal and interplanetary type II bursts. II. Coronal magnetic field and Alfvén velocity. *Astron. Astrophys.* **396**, 673–682 (2002). <https://doi.org/10.1051/0004-6361:20021413>
- B. Vršnak, J. Magdalenic, P. Zlobec, Band-splitting of coronal and interplanetary type II bursts. III. Physical conditions in the upper corona and interplanetary space. *Astron. Astrophys.* **413**, 753–763 (2004a). <https://doi.org/10.1051/0004-6361:20034060>
- B. Vršnak, D. Maričić, A.L. Stanger, A. Veronig, Coronal mass ejection of 15 May 2001: II. Coupling of the CME acceleration and the flare energy release. *Sol. Phys.* **225**, 355–378 (2004b). <https://doi.org/10.1007/s11207-004-4995-x>
- B. Vršnak, D. Ruždjak, D. Sudar, N. Gopalswamy, Kinematics of coronal mass ejections between 2 and 30 solar radii. What can be learned about forces governing the eruption? *Astron. Astrophys.* **423**, 717–728 (2004c). <https://doi.org/10.1051/0004-6361:20047169>
- B. Vršnak, D. Sudar, D. Ruždjak, The CME-flare relationship: are there really two types of CMEs? *Astron. Astrophys.* **435**, 1149–1157 (2005). <https://doi.org/10.1051/0004-6361:20042166>
- B. Vršnak, M. Temmer, A. Veronig, M. Karlický, J. Lin, Shrinking and cooling of flare loops in a two-ribbon flare. *Sol. Phys.* **234**, 273–299 (2006). <https://doi.org/10.1007/s11207-006-0093-6>
- B. Vršnak, D. Maričić, A.L. Stanger, A.M. Veronig, M. Temmer, D. Roša, Acceleration phase of coronal mass ejections: I. Temporal and spatial scales. *Sol. Phys.* **241**, 85–98 (2007). <https://doi.org/10.1007/s11207-006-0290-3>
- B. Vršnak, D. Vrbanc, J. Čalogović, Dynamics of coronal mass ejections. The mass-scaling of the aerodynamic drag. *Astron. Astrophys.* **490**, 811–815 (2008). <https://doi.org/10.1051/0004-6361:200810215>
- B. Vršnak, G. Poletto, E. Vujčić, A. Vourlidas, Y.K. Ko, J.C. Raymond, A. Ciaravella, T. Žic, D.F. Webb, A. Bemporad, F. Landini, G. Schettino, C. Jacobs, S.T. Suess, Morphology and density structure of post-CME current sheets. *Astron. Astrophys.* **499**, 905–916 (2009). <https://doi.org/10.1051/0004-6361/200810844>. [arXiv:0902.3705](https://arxiv.org/abs/0902.3705)

- B. Vršnak, T. Žic, D. Vrbanc, M. Temmer, T. Rollett, C. Möstl, A. Veronig, J. Čalogović, M. Dumbović, S. Lulić, Y.J. Moon, A. Shanmugaraju, Propagation of interplanetary coronal mass ejections: the drag-based model. *Sol. Phys.* **285**, 295–315 (2013). <https://doi.org/10.1007/s11207-012-0035-4>
- H. Wang, J. Chae, V. Yurchyshyn, G. Yang, M. Steinegger, P. Goode, Inter-active region connection of sympathetic flaring on 2000 February 17. *Astrophys. J.* **559**, 1171–1179 (2001). <https://doi.org/10.1086/322377>
- R. Wang, Y.D. Liu, I. Zimovets, H. Hu, X. Dai, Z. Yang, Sympathetic solar filament eruptions. *Astrophys. J. Lett.* **827**, L12 (2016). <https://doi.org/10.3847/2041-8205/827/1/L12>. arXiv:1608.01067
- T. Wang, A. Xu, H. Zhang, Evolution of vector magnetic fields and vertical currents and their relationship with solar flares in AR 5747. *Sol. Phys.* **155**, 99–112 (1994). <https://doi.org/10.1007/BF00670733>
- Y.M. Wang, N.R. Sheeley Jr., Solar wind speed and coronal flux-tube expansion. *Astrophys. J.* **355**, 726–732 (1990). <https://doi.org/10.1086/168805>
- D.F. Webb, T.A. Howard, Coronal mass ejections: observations. *Living Rev. Sol. Phys.* **9**, 3 (2012). <https://doi.org/10.12942/lrsp-2012-3>
- D.F. Webb, J. Burkepile, T.G. Forbes, P. Riley, Observational evidence of new current sheets trailing coronal mass ejections. *J. Geophys. Res. Space Phys.* **108**, 1440 (2003). <https://doi.org/10.1029/2003JA009923>
- B.T. Welsch, Magnetic flux cancellation and coronal magnetic energy. *Astrophys. J.* **638**, 1101–1109 (2006). <https://doi.org/10.1086/498638>
- M.S. Wheatland, A Bayesian approach to solar flare prediction. *Astrophys. J.* **609**, 1134–1139 (2004). <https://doi.org/10.1086/421261>. arXiv:astro-ph/0403613
- M.S. Wheatland, I.J.D. Craig, Including flare sympathy in a model for solar flare statistics. *Sol. Phys.* **238**, 73–86 (2006). <https://doi.org/10.1007/s11207-006-0206-2>
- D.R. Williams, T. Török, P. Démoulin, L. van Driel-Gesztelyi, B. Kliem, Eruption of a kink-unstable filament in NOAA active region 10696. *Astrophys. J. Lett.* **628**, L163–L166 (2005). <https://doi.org/10.1086/432910>. arXiv:astro-ph/0507661
- R. Wolfson, Shear-induced opening of the coronal magnetic field. *Astrophys. J.* **443**, 810–817 (1995). <https://doi.org/10.1086/175571>
- G. Yang, Y. Xu, W. Cao, H. Wang, C. Denker, T.R. Rimmele, Photospheric shear flows along the magnetic neutral line of active region 10486 prior to an X10 flare. *Astrophys. J. Lett.* **617**, L151–L154 (2004). <https://doi.org/10.1086/427210>
- J. Yang, Y. Jiang, R. Zheng, Y. Bi, J. Hong, B. Yang, Sympathetic filament eruptions from a bipolar helmet streamer in the Sun. *Astrophys. J.* **745**, 9 (2012). <https://doi.org/10.1088/0004-637X/745/1/9>
- S.L. Yardley, L.M. Green, D.R. Williams, L. van Driel-Gesztelyi, G. Valori, S. Dacie, Flux cancellation and the evolution of the eruptive filament of 2011 June 7. *Astrophys. J.* **827**, 151 (2016). <https://doi.org/10.3847/0004-637X/827/2/151>. arXiv:1606.08264
- S. Yashiro, N. Gopalswamy, S. Akiyama, G. Michalek, R.A. Howard, Visibility of coronal mass ejections as a function of flare location and intensity. *J. Geophys. Res. Space Phys.* **110**, A12S05 (2005). <https://doi.org/10.1029/2005JA011151>
- Y. Yuan, F.Y. Shih, J. Jing, H.M. Wang, Automated flare forecasting using a statistical learning technique. *Res. Astron. Astrophys.* **10**, 785–796 (2010). <https://doi.org/10.1088/1674-4527/10/8/008>
- Y. Yuan, F.Y. Shih, J. Jing, H. Wang, Solar flare forecasting using sunspot-groups classification and photospheric magnetic parameters, in *Physics of Sun and Star Spots, IAU Symposium*, vol. 273, ed. by D. Prasad Choudhary, K.G. Strassmeier (2011), pp. 446–450. <https://doi.org/10.1017/S1743921311015742>
- V.B. Yurchyshyn, H. Wang, Magnetic flux cancellation observed in the sunspot moat. *Sol. Phys.* **202**, 309–318 (2001). <https://doi.org/10.1023/A:1012200827156>
- D.M. Zarro, A.C. Sterling, B.J. Thompson, H.S. Hudson, N. Nitta, SOHO EIT observations of extreme-ultraviolet “dimming” associated with a halo coronal mass ejection. *Astrophys. J. Lett.* **520**, L139–L142 (1999). <https://doi.org/10.1086/312150>
- J. Zhang, K.P. Dere, A statistical study of main and residual accelerations of coronal mass ejections. *Astrophys. J.* **649**, 1100–1109 (2006). <https://doi.org/10.1086/506903>
- J. Zhang, K.P. Dere, R.A. Howard, M.R. Kundu, S.M. White, On the temporal relationship between coronal mass ejections and flares. *Astrophys. J.* **559**, 452–462 (2001). <https://doi.org/10.1086/322405>
- J. Zhang, K.P. Dere, R.A. Howard, A. Vourlidas, A study of the kinematic evolution of coronal mass ejections. *Astrophys. J.* **604**, 420–432 (2004). <https://doi.org/10.1086/381725>
- M. Zhang, B.C. Low, The hydromagnetic nature of solar coronal mass ejections. *Annu. Rev. Astron. Astrophys.* **43**, 103–137 (2005). <https://doi.org/10.1146/annurev.astro.43.072103.150602>
- M. Zhang, N. Flyer, B.C. Low, Magnetic field confinement in the corona: the role of magnetic helicity accumulation. *Astrophys. J.* **644**, 575–586 (2006). <https://doi.org/10.1086/503353>. arXiv:astro-ph/0603011
- Q. Zhang, R. Liu, Y. Wang, C. Shen, K. Liu, J. Liu, S. Wang, A Prominence Eruption Driven by Flux Feeding from Chromospheric Fibrils (2014). ArXiv e-prints. arXiv:1405.6833

- X.P. Zhao, S.P. Plunkett, W. Liu, Determination of geometrical and kinematical properties of halo coronal mass ejections using the cone model. *J. Geophys. Res. Space Phys.* **107**, 1223 (2002). <https://doi.org/10.1029/2001JA009143>
- S. Zharkov, L.M. Green, S.A. Matthews, V.V. Zharkova, 2011 February 15: sunquakes produced by flux rope eruption. *Astrophys. J. Lett.* **741**, L35 (2011). <https://doi.org/10.1088/2041-8205/741/2/L35>. [arXiv:1110.2005](https://arxiv.org/abs/1110.2005)
- T. Žic, B. Vršnak, M. Skender, The magnetic flux and self-inductivity of a thick toroidal current. *J. Plasma Phys.* **73**, 741–756 (2007). <https://doi.org/10.1017/S0022377806006209>
- H. Zirin, H. Wang, Narrow lanes of transverse magnetic field in sunspots. *Nature* **363**, 426–428 (1993). <https://doi.org/10.1038/363426a0>
- F. Zuccarello, P. Romano, F. Farnik, M. Karlicky, L. Contarino, V. Battiato, S.L. Guglielmino, M. Comparato, I. Ugarte-Urra, The X17.2 flare occurred in NOAA 10486: an example of filament destabilization caused by a domino effect. *Astron. Astrophys.* **493**, 629–637 (2009). <https://doi.org/10.1051/0004-6361/200809887>
- F.P. Zuccarello, A. Soenen, S. Poedts, F. Zuccarello, C. Jacobs, Initiation of coronal mass ejections by magnetic flux emergence in the framework of the breakout model. *Astrophys. J. Lett.* **689**, L157–L160 (2008). <https://doi.org/10.1086/595821>
- F.P. Zuccarello, C. Jacobs, A. Soenen, S. Poedts, B. van der Holst, F. Zuccarello, Modelling the initiation of coronal mass ejections: magnetic flux emergence versus shearing motions. *Astron. Astrophys.* **507**, 441–452 (2009). <https://doi.org/10.1051/0004-6361/200912541>
- F.P. Zuccarello, Z. Meliani, S. Poedts, Numerical modeling of the initiation of coronal mass ejections in active region NOAA 9415. *Astrophys. J.* **758**, 117 (2012). <https://doi.org/10.1088/0004-637X/758/2/117>